

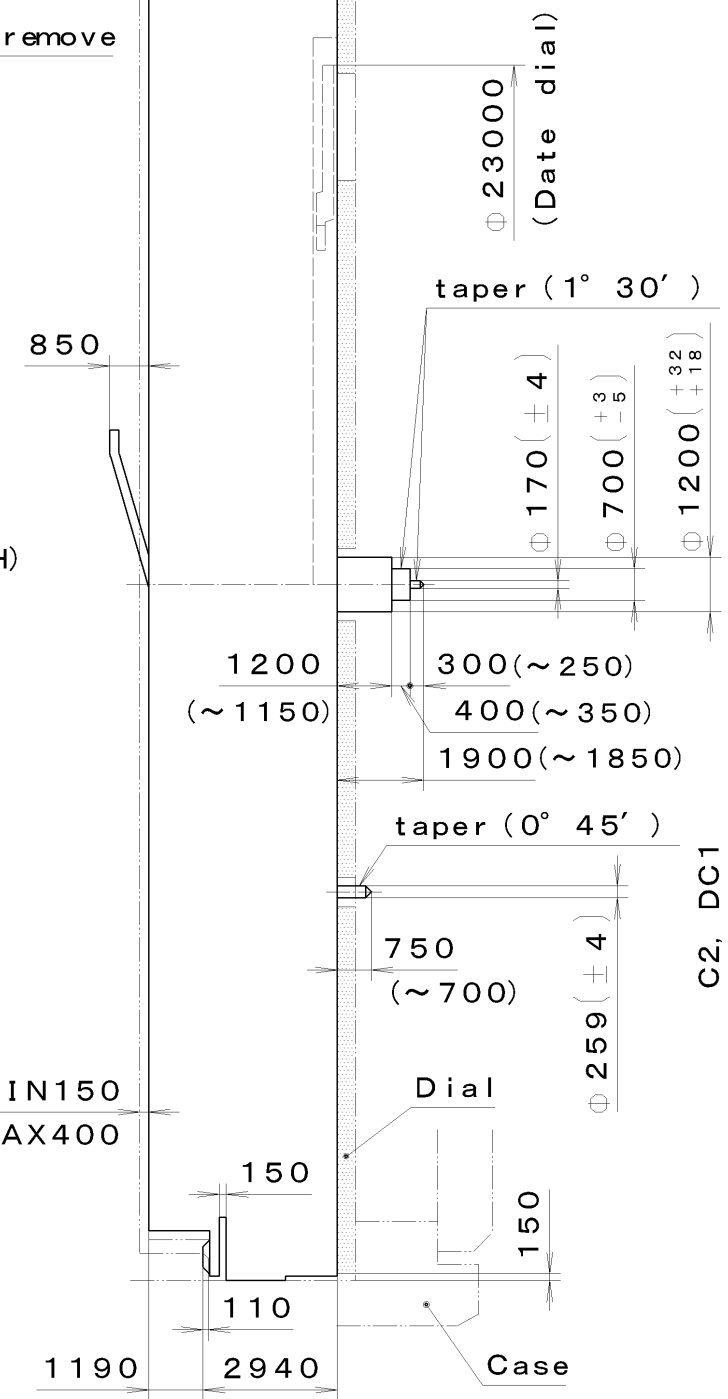
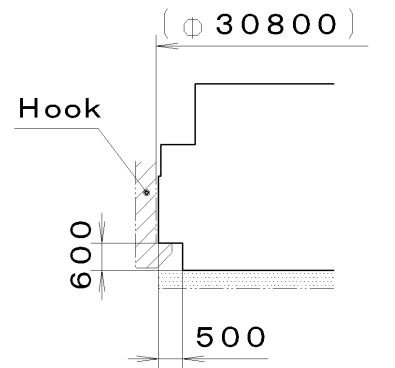
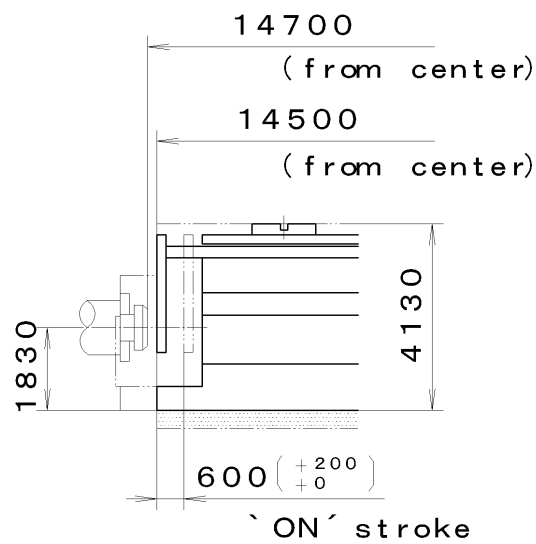
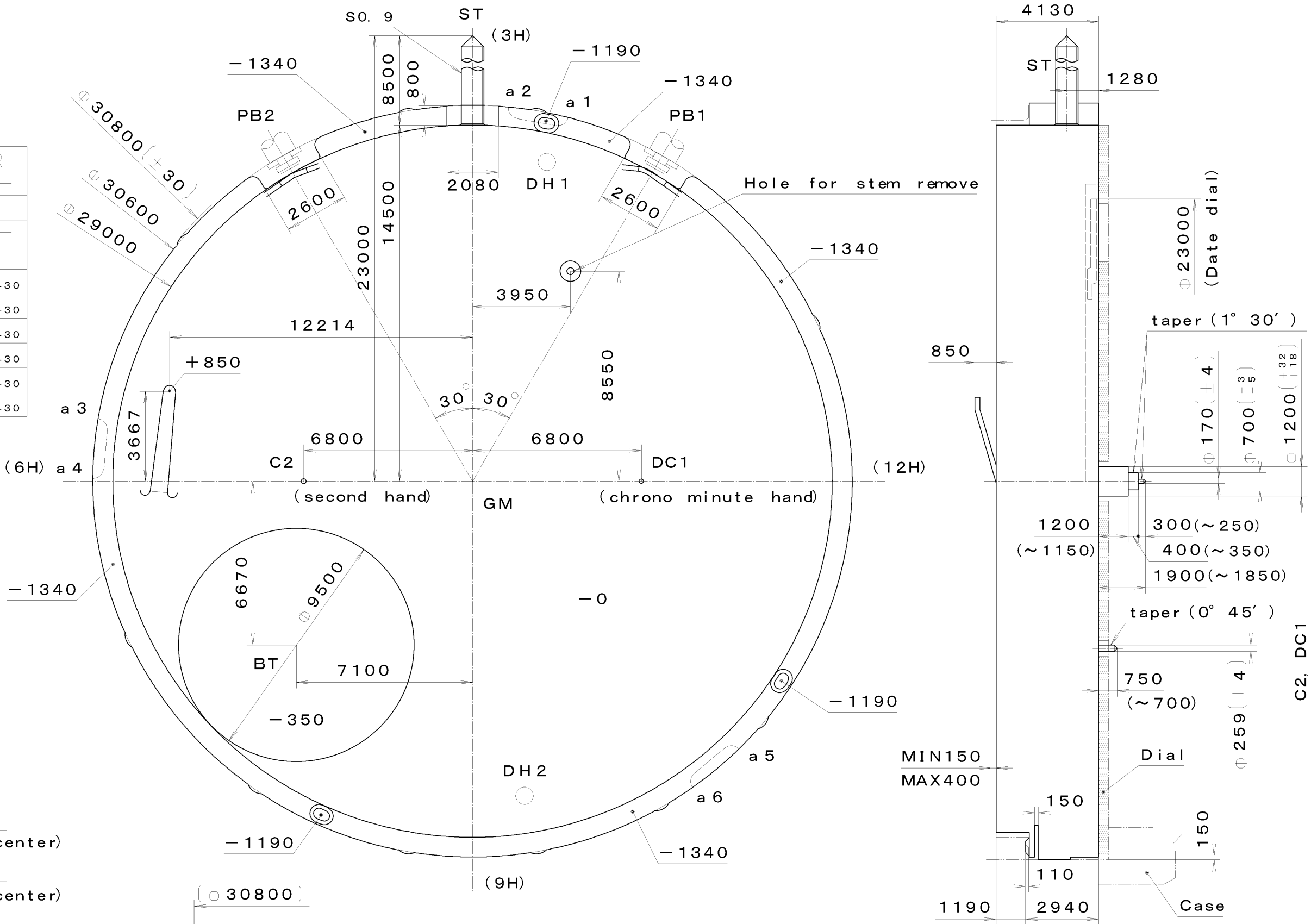
This drawing is provisional and subject to our reconfirmation and/or revision without notice.

DH1~DH2=25816 (±20)

Stroke for PB
must be minimum
600 [$+200$ / -0] μm

Coordinates

Mark	X	Y	R
GM	0	0	—
DH1	3000	13000	—
DH2	2100	-12800	—
a 1	3441	14908	430
a 2	1865	15186	430
a 3	-15151	2129	430
a 4	-15291	535	430
a 5	10434	-11190	430
a 6	9208	-12219	430

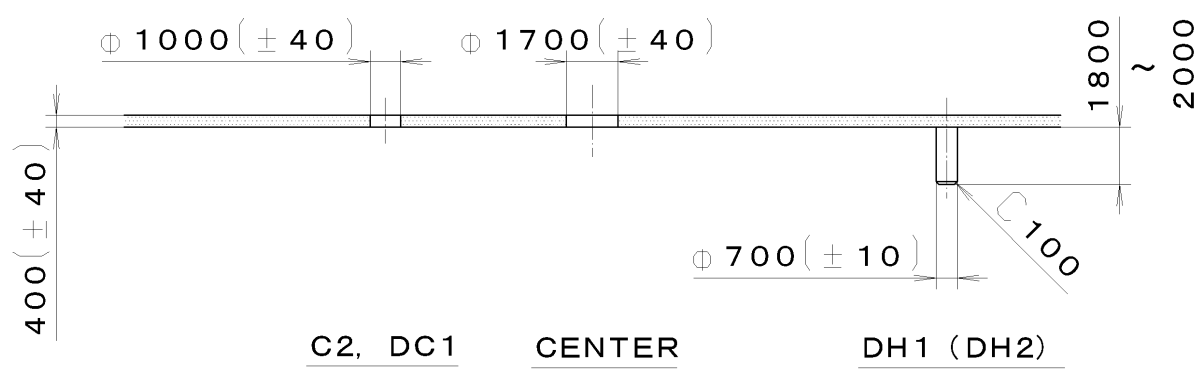
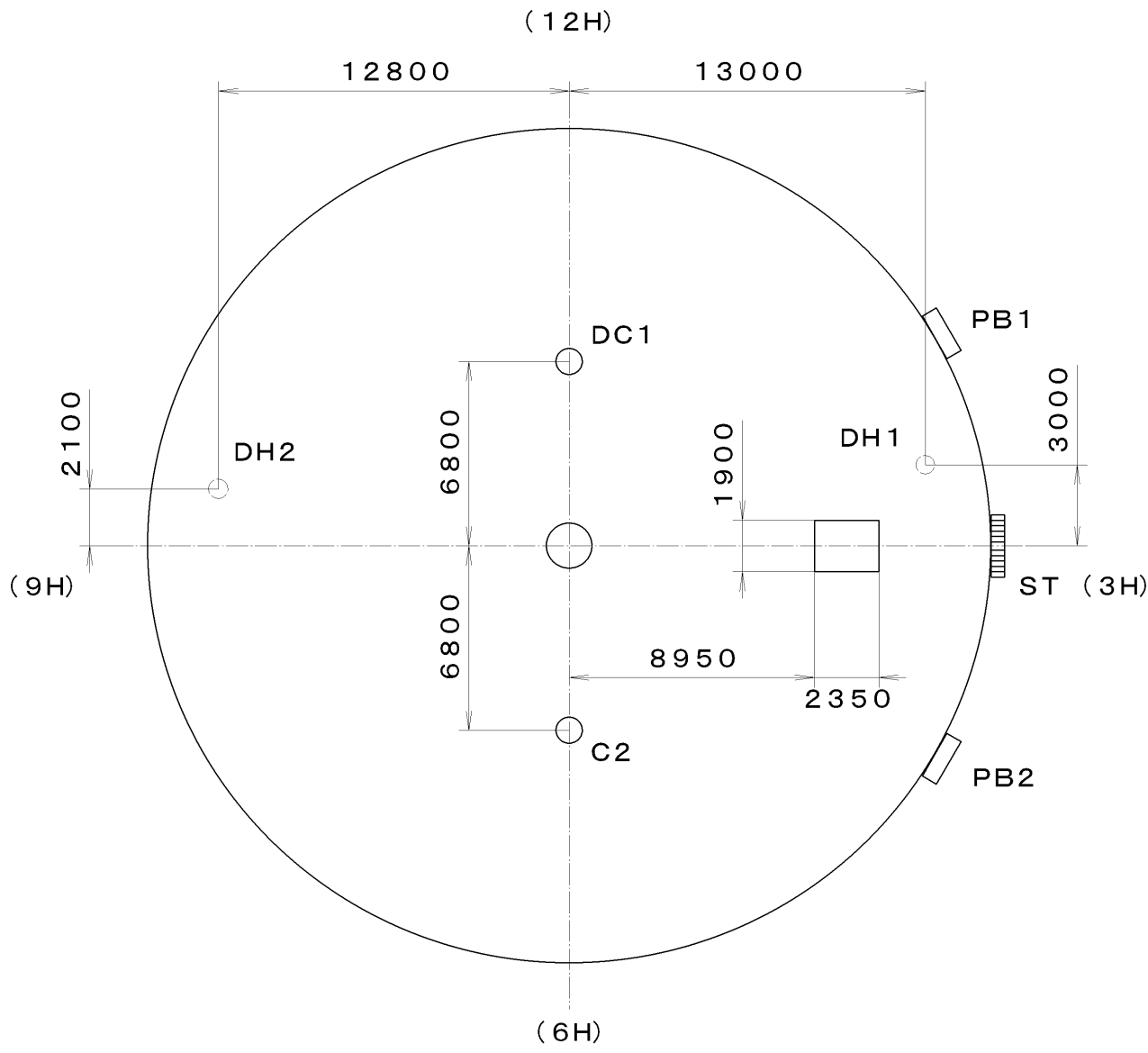


Quantity		Cal. No. : OS11						
Unit	1/1000 mm	Parts:						
Scale	6:1	Name:						
Date		Frame for Case						
Drawn		Drawing No. : OS11C000						
Checked	T. Hiruta							
Approved								
Material		<table border="1"> <tr> <td colspan="2">General Tolerances</td> </tr> <tr> <td>Dimensions</td> <td></td> </tr> <tr> <td>Angles</td> <td></td> </tr> </table>	General Tolerances		Dimensions		Angles	
General Tolerances								
Dimensions								
Angles								
Heat Treatment								
Hardness								
Plating								

MIYOTA

*** TIPW OS11 (01) *** (2100 1121) 03-01-08

This drawing is provisional and subject to our reconfirmation and/or revision without notice.



C2, DC1 CENTER DH1 (DH2)

*** T I P W OS11-00A (01) *** (2100 1121) 03-01-08	7		Quantity		Cal. No. : OS11-00A
	6		Unit	1/1000 mm	
	5		Scale	4:1	Parts:
	4		Date		
	3		Drawn		
	2		Checked	T. Hiruta	Name:
	1		Approved		Indications for Dial
Material				Drawing No. : OS11D000	
Heat Treatment		General Tolerances	MIYOTA		
Hardness		Dimensions			
Plating		Angles			