

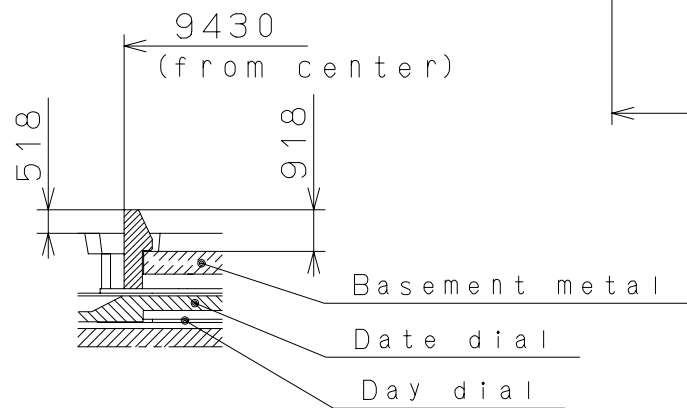
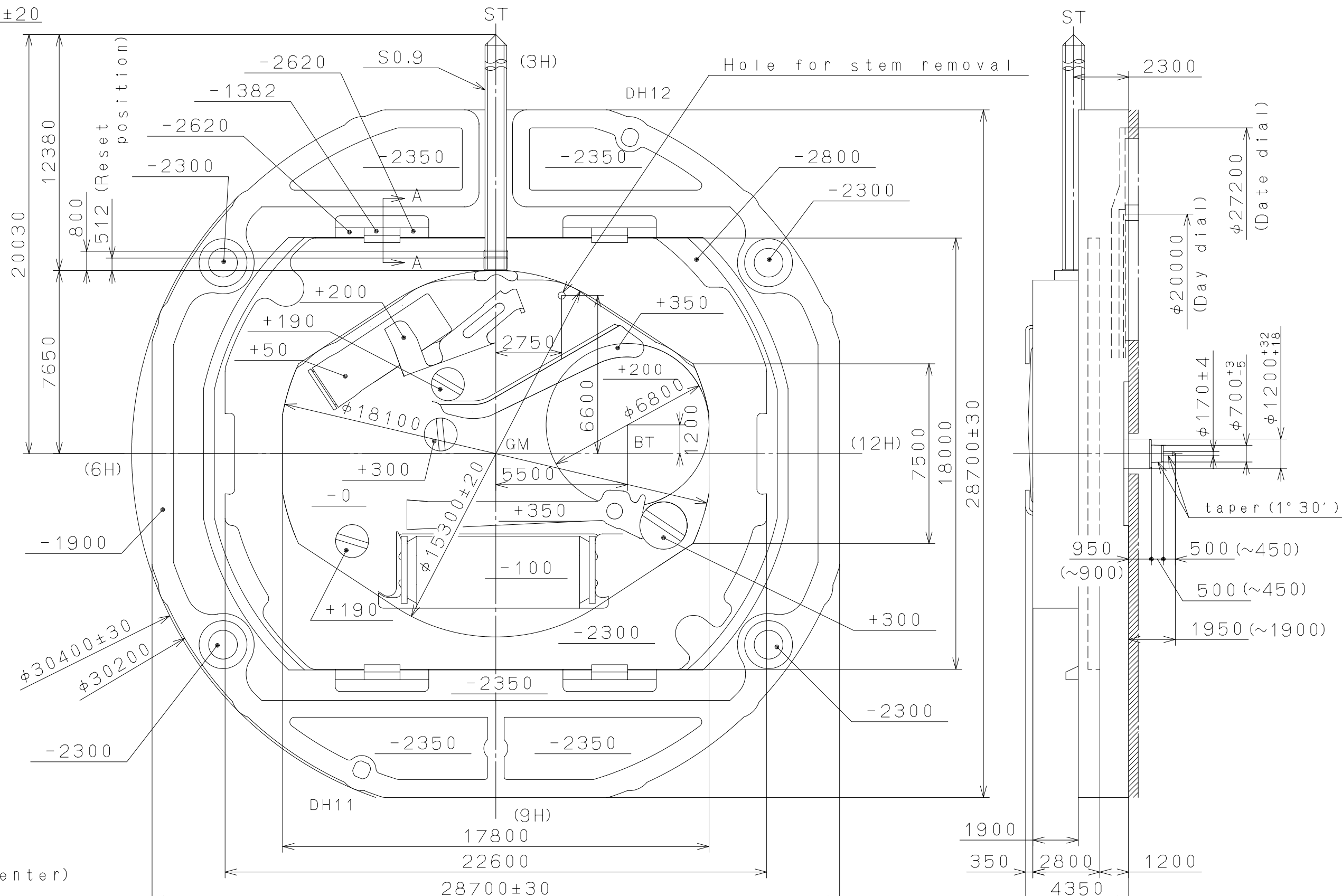
2007/03/16 (10:25:46)

This drawing is provisional and subject to our reconfirmation and/or revision without notice.

DH11~DH12=28678±20

Coordinates

記号	X	Y
GM	0	0
DH11	-5600	-13200
DH12	5600	13200



Section A-A (other hook)

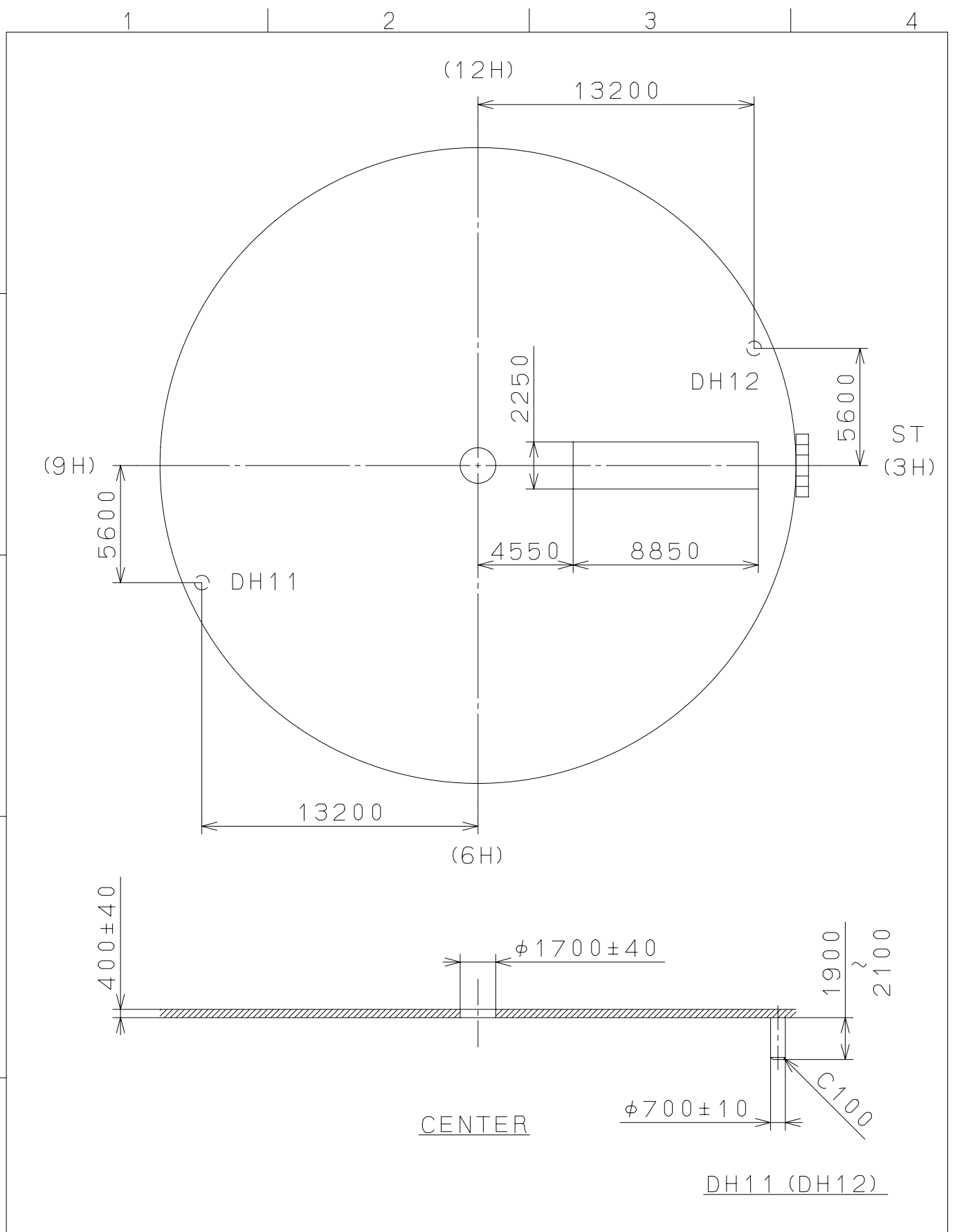
△5		Quantity		Cal. NO.:	
△4		Unit	1/1000mm		2405
△3		Scale	6/1	Parts No.:	
△2		Date			
△1		Drawn			
Mark	Date	Description	Appr.	Checked	M. Fukuda
Alterations				Approved	Name:
				Frame for Case	
Material				Drawing No.: 2405C000	
Heat Treatment				General Tolerances	
Hardness				Dimensions	
Plating				Angles	

MIYOTA

CITIZEN WATCH CO., LTD. TOKYO, JAPAN

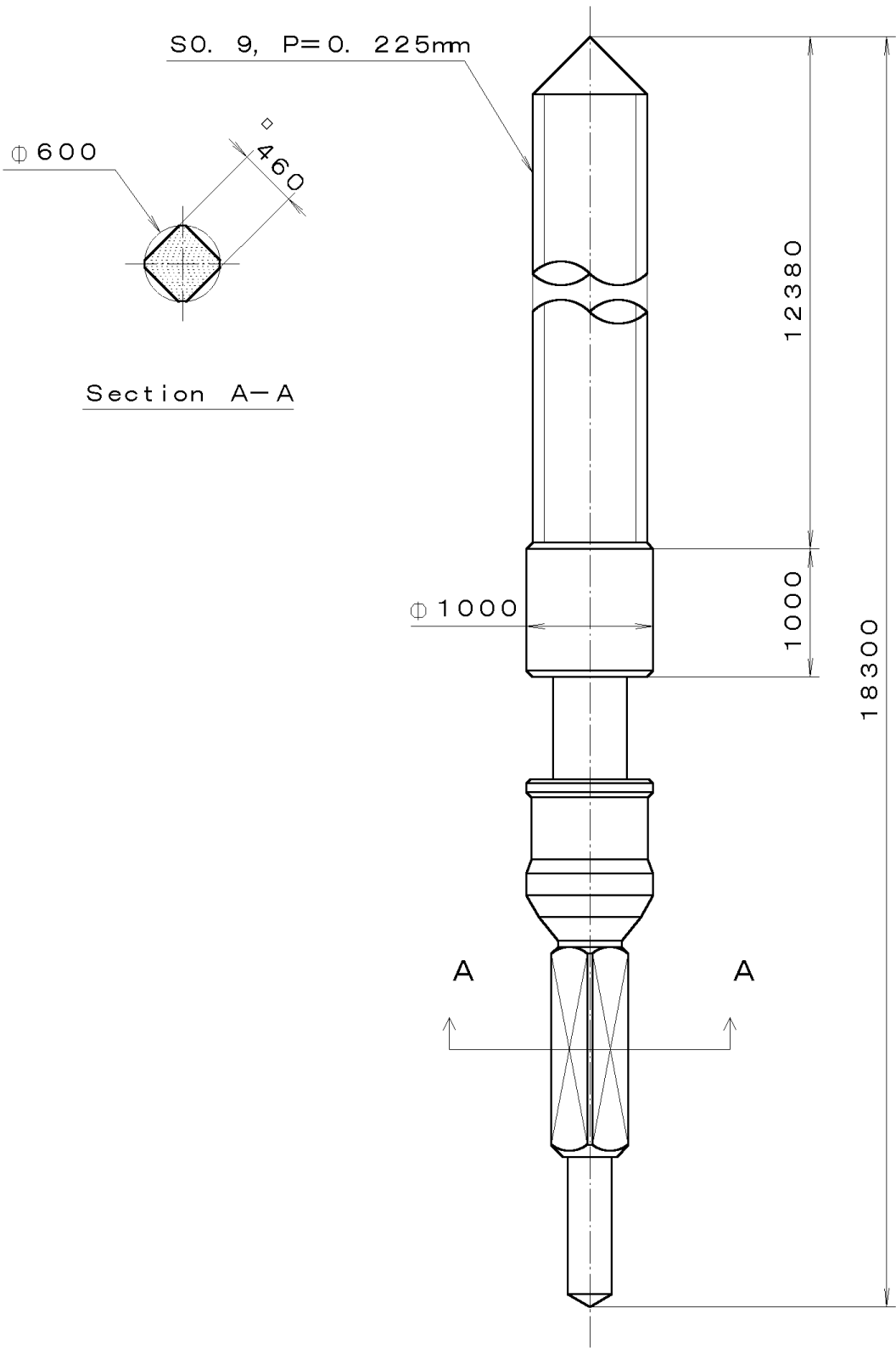
2007/03/16 (09:55:39)

This drawing is provisional and subject to our reconfirmation and/or revision without notice.



△			Quantity		Cal.NO.:
△			Unit	1 / 1000 mm	2405-00A
△			Scale	4 / 1	Parts No.:
△			Date		
△			Drawn		
Mark	Date	Description	Appr.	Checked	Name:
		Alterations	Approved	M. Fukuda	Indications for Dial
Material					Drawing No.: 2405D000
Heat Treatment			General Tolerances		MIYOTA
Hardness			Dimensions		
Plating			Angles		
					CITIZEN WATCH CO., LTD. TOKYO, JAPAN

This drawing is provisional and subject to our reconfirmation and/or revision without notice.



*** T I P W (01) *** (2100 1121) 00-06-23

7			Quantity		Cal. No. :
6			Unit	1/1000 mm	
5			Scale	20:1	Parts:
4			Date		065-299
3			Drawn		Name:
2			Checked	T. Hiruta	SETTING STEM
1			Approved		Drawing No. : 2990S000
Material					
Heat Treatment			General Tolerances		
Hardness			Dimensions		
Plating			Angles		

CITIZEN WATCH CO., LTD.
TOKYO, JAPAN