

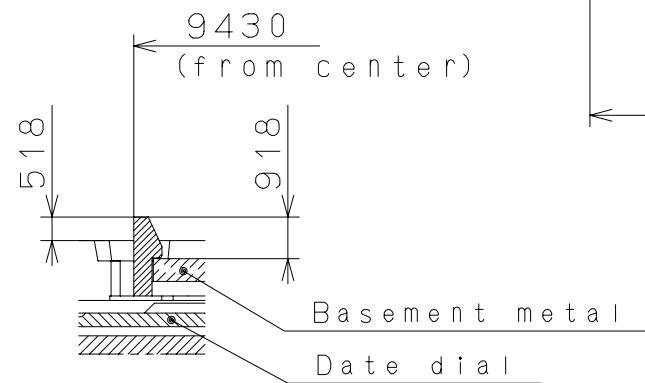
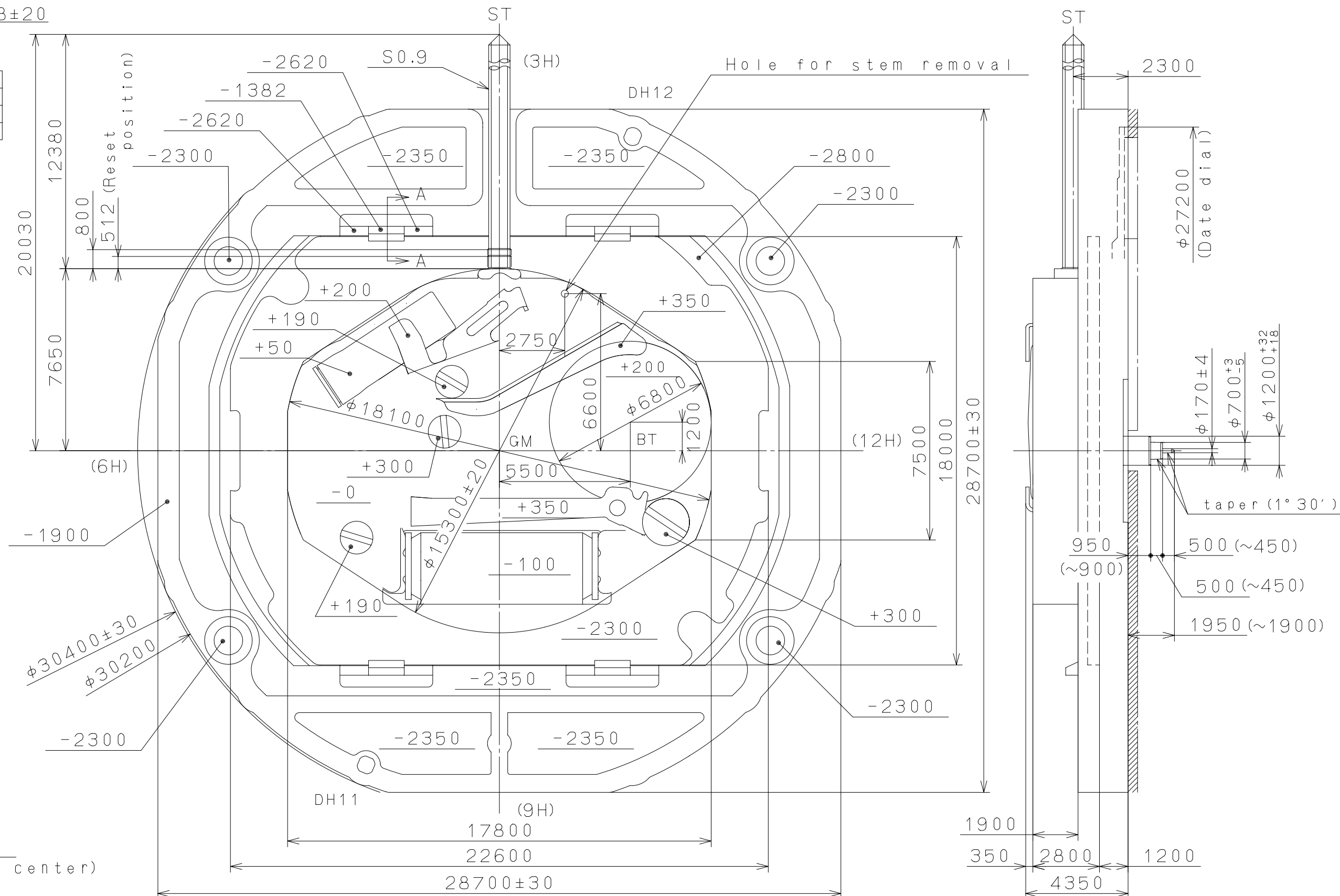
2007/03/16 (10:30:29)

This drawing is provisional and subject to our reconfirmation and/or revision without notice.

DH11~DH12=28678±20

Coordinates

記号	X	Y
GM	0	0
DH11	-5600	-13200
DH12	5600	13200

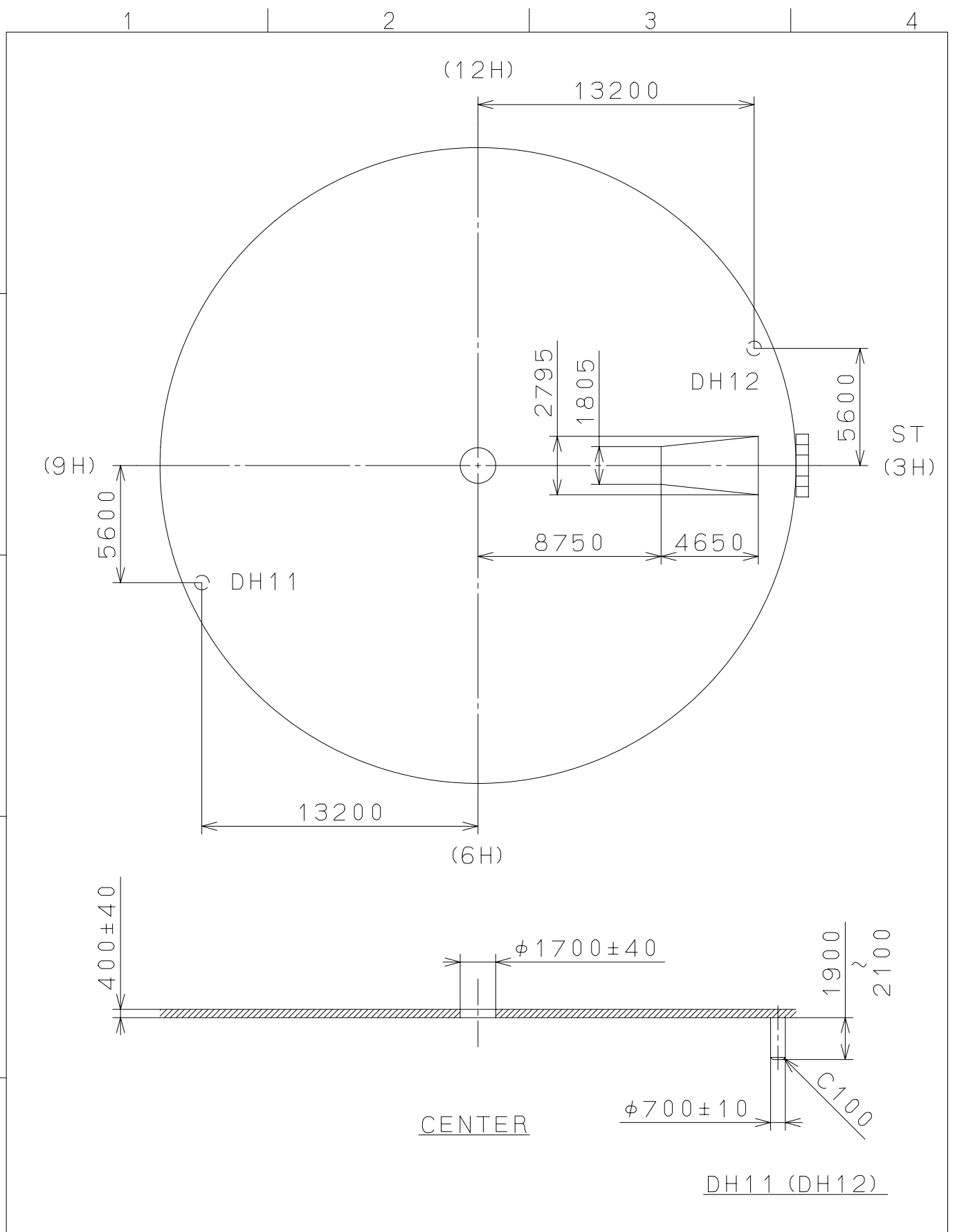


Section A-A (other hook)

△5			Quantity		Cal. NO.:
△4			Unit	1/1000mm	2453
△3			Scale	6/1	Parts No.:
△2			Date		
△1			Drawn		
Mark	Date	Description	Appr.	Checked	M. Fukuda
Alterations				Approved	Name:
				Frame for Case	
Material				Drawing No.: 2453C000	
Heat Treatment				General Tolerances	
Hardness				Dimensions	
Plating				Angles	
MIYOTA					
CITIZEN WATCH CO., LTD. TOKYO, JAPAN					

2007/03/16 (09:52:49)

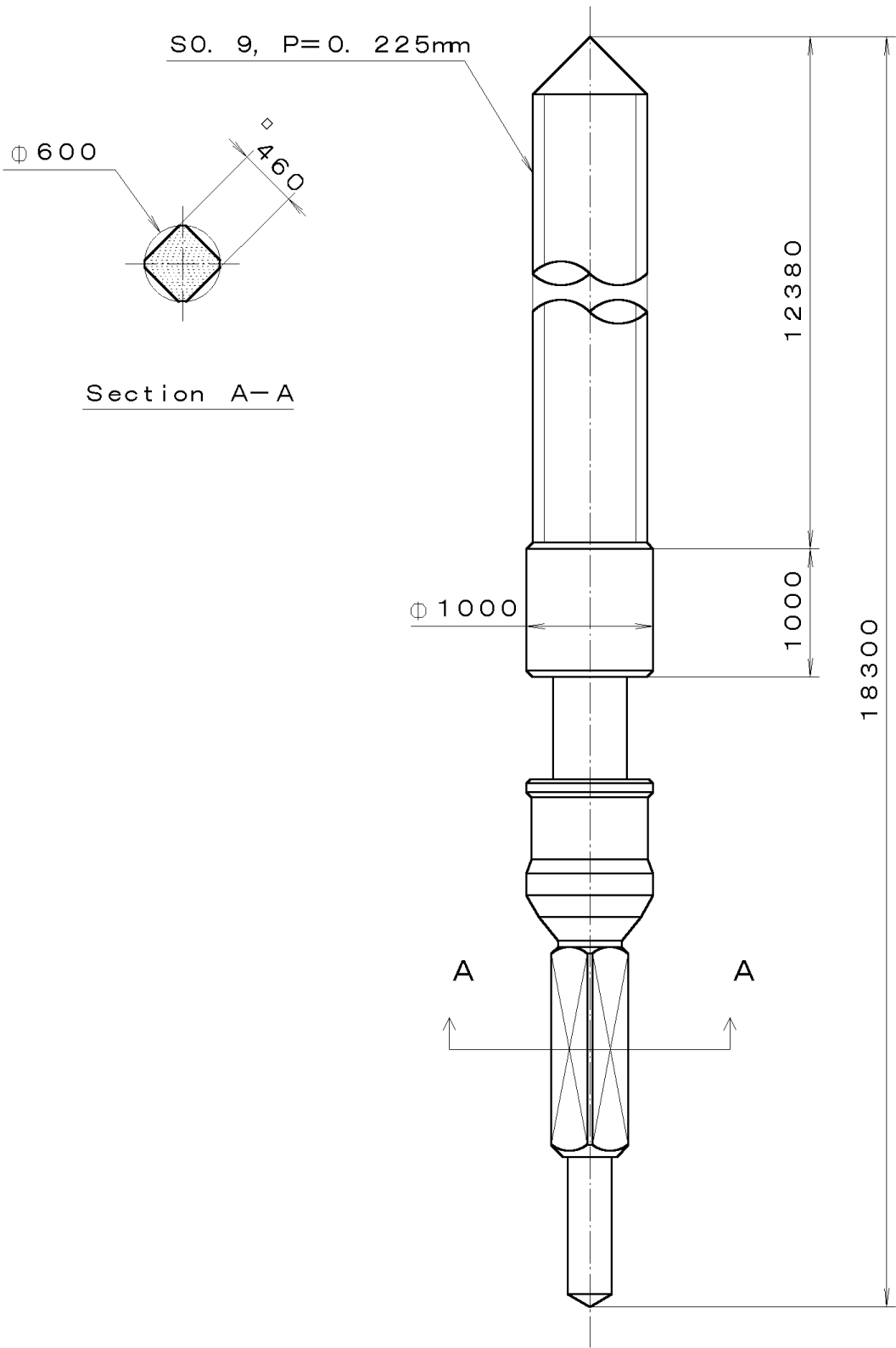
This drawing is provisional and subject to our reconfirmation and/or revision without notice.



△5			Quantity		Cal.NO.:
△4			Unit	1 / 1000 _{mm}	2453-00A
△3			Scale	4 / 1	Parts No.:
△2			Date		
△1			Drawn		
Mark	Date	Description	Appr.	Checked	M. Fukuda
Alterations			Approved	Name:	
Material					Indications for Dial
Heat Treatment					Drawing No.: 2453D000
Hardness					MIYOTA
Plating					
					CITIZEN WATCH CO., LTD. TOKYO, JAPAN

This drawing is provisional and subject to our reconfirmation and/or revision without notice.

*** T I P W (01) *** (2100 1121) 00-06-23



7			Quantity		Cal. No. :
6			Unit	1/1000 mm	Parts:
5			Scale	20:1	
4			Date		065-299
3			Drawn		
2			Checked	T. Hiruta	Name:
1			Approved		SETTING STEM
Material					Drawing No. : 2990S000
Heat Treatment			General Tolerances		CITIZEN WATCH CO.,LTD. TOKYO, JAPAN
Hardness			Dimensions		
Plating			Angles		