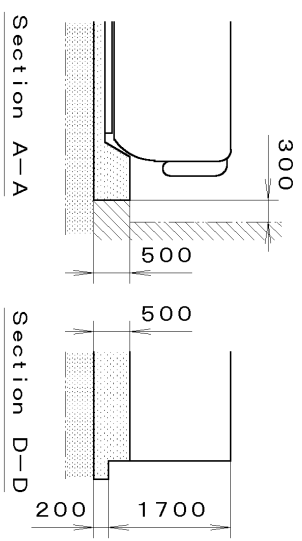
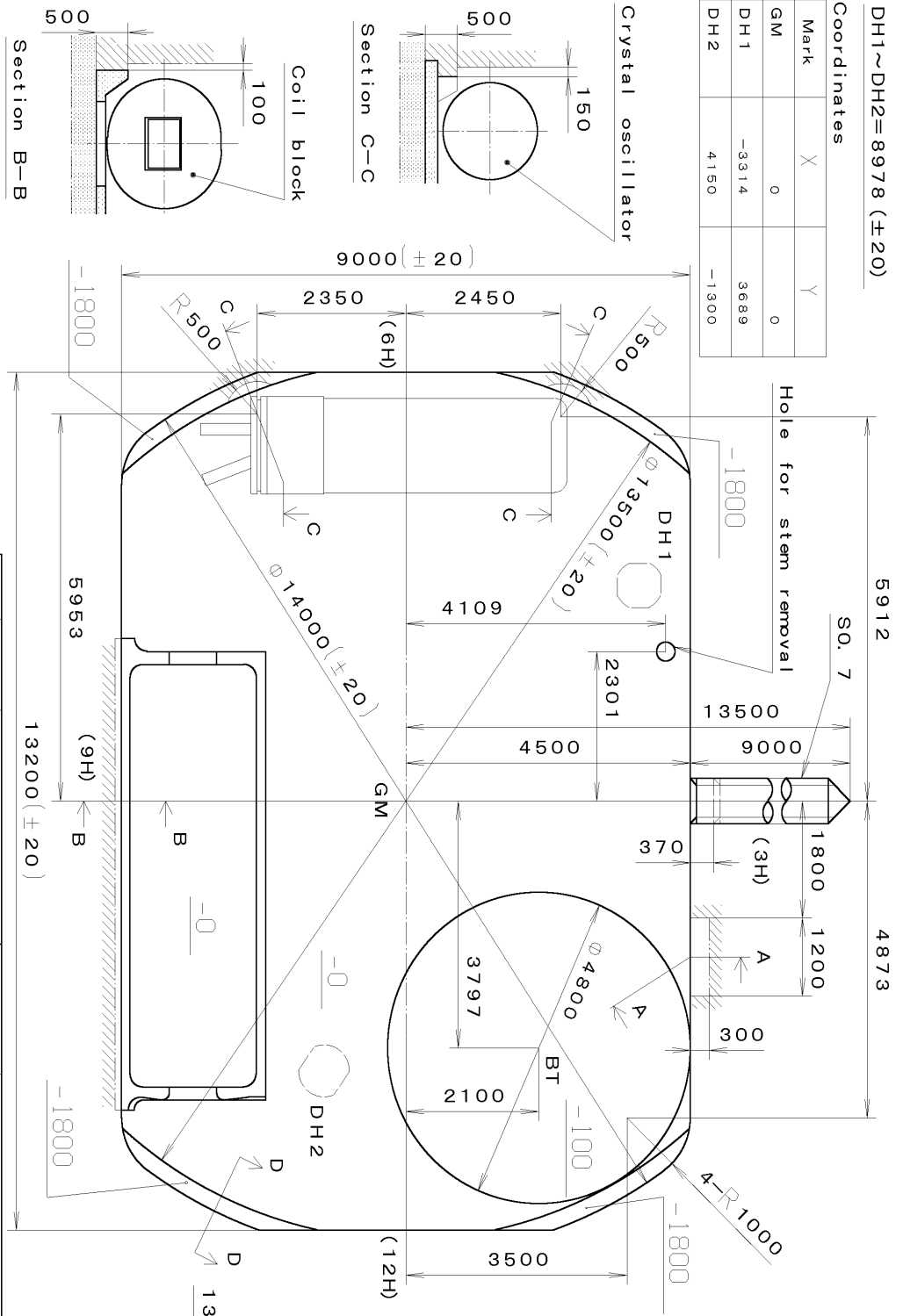




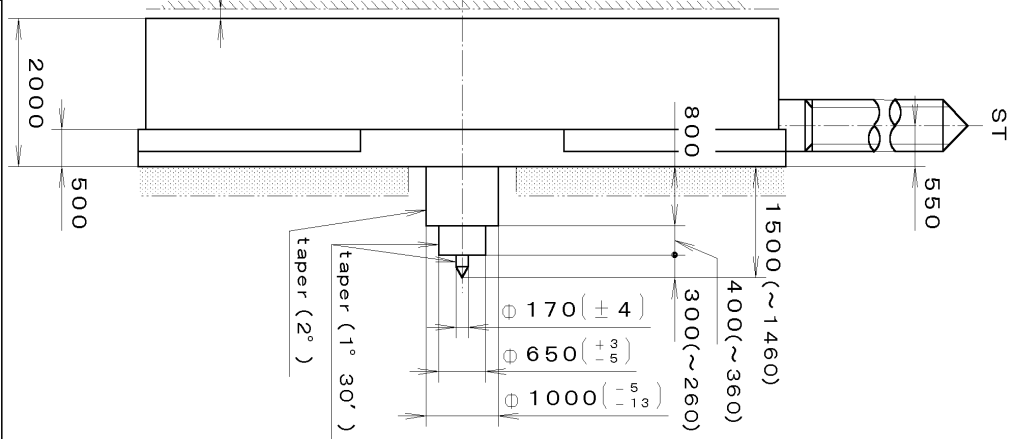
DH1~DH2=8978 (±20)

Coordinates

Mark	X	Y
GM	0	0
DH1	-3314	3689
DH2	4150	-1300

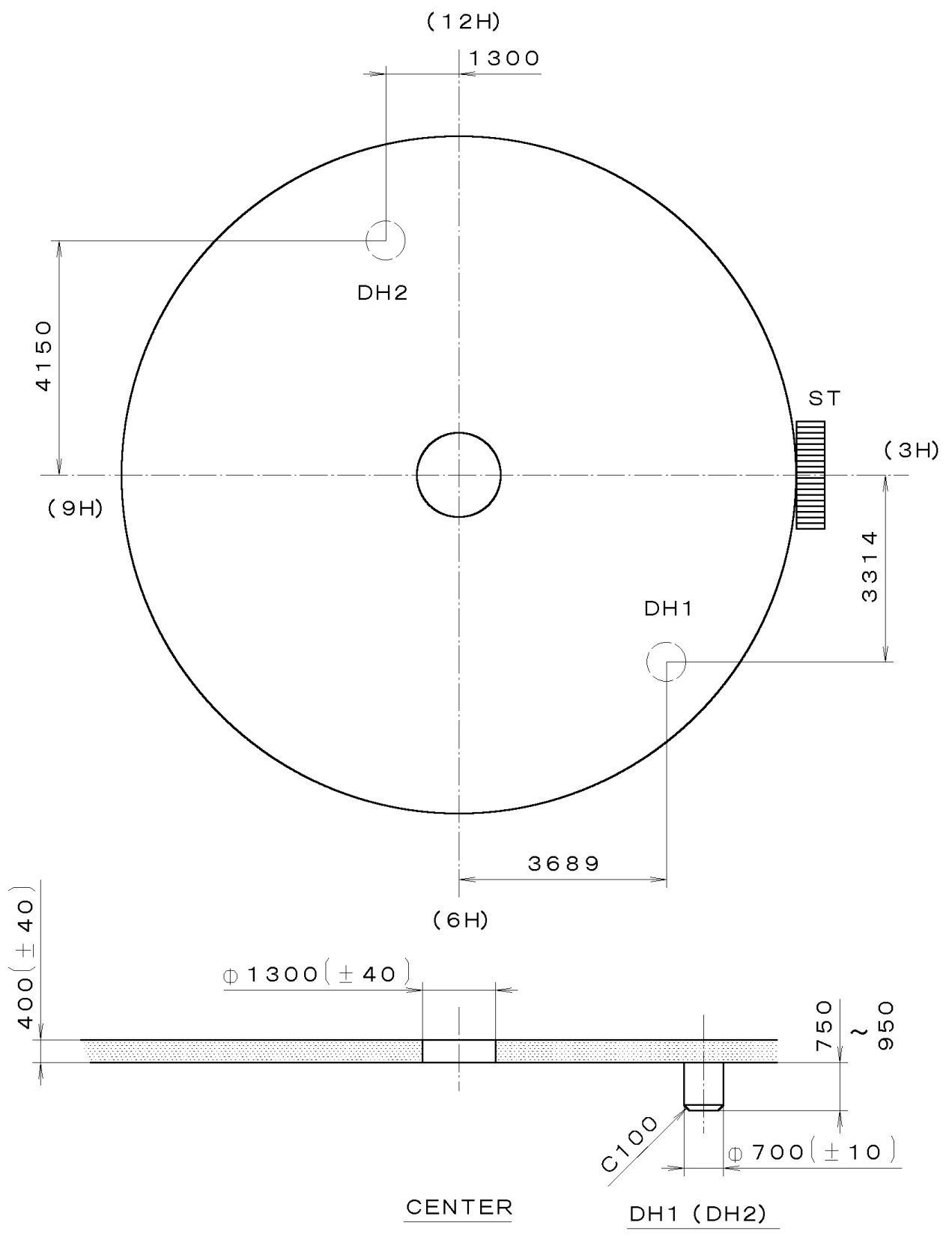


△7	Quantity	1/1000 mm	Cal. No. : 5R32
△6	Unit	10:1	Parts :
△5	Scale		Name :
△4	Date		Frame for Case
△3	Drawn	T. Hiruta	Drawing No. : 5R32C000
△2	Checked		
△1	Approved		
Material			
Heat Treatment			
Hardness			
Plating			
General Tolerances			
Dimensions			
Angles			



This drawing is provisional and subject to our reconfirmation and/or revision without notice.

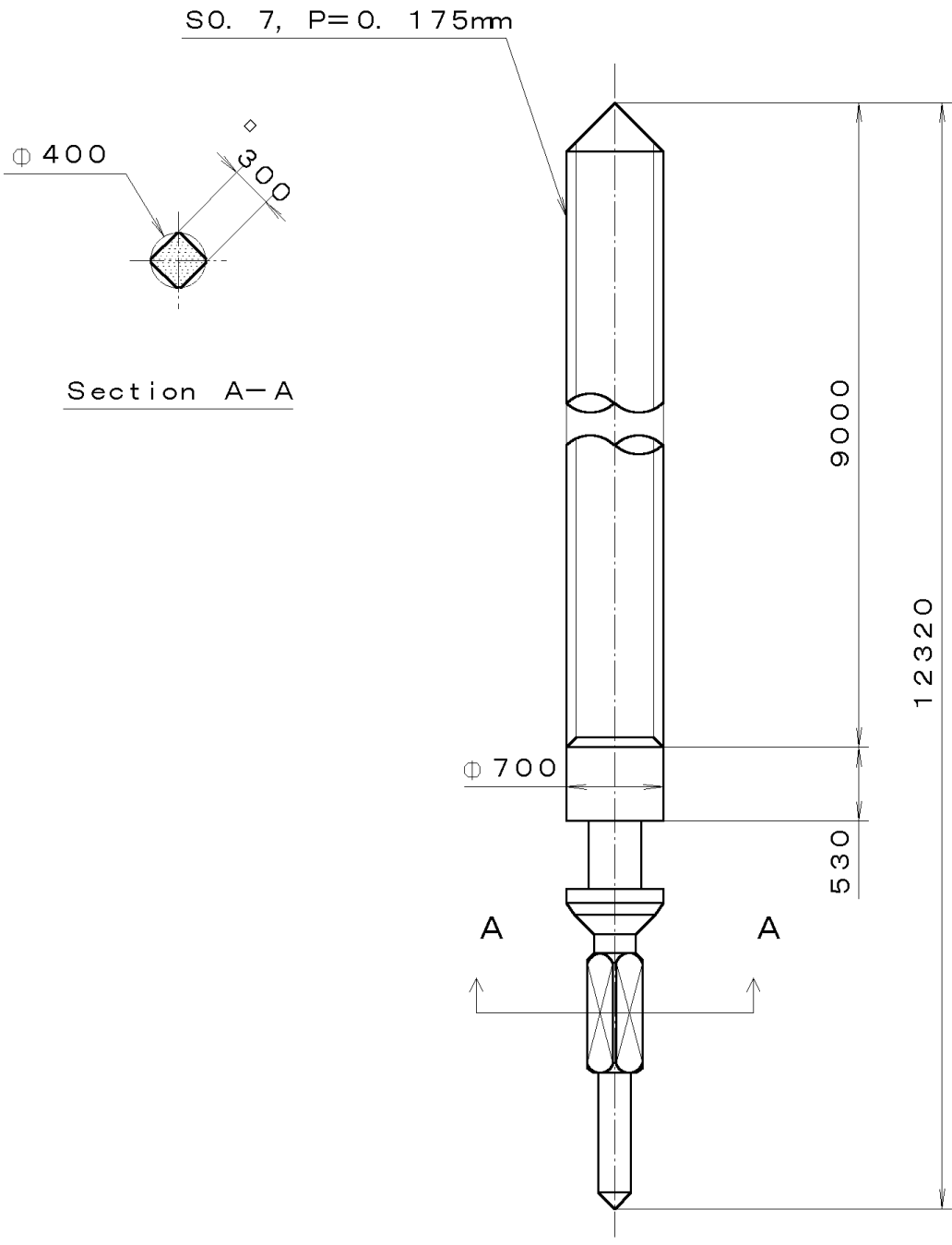
\*\*\* T I P W (01) \*\*\* (2100 1121) 00-06-15



7		Quantity		Cal. No. :	5R32-00A
6		Unit	1/1000 mm	Parts:	
5		Scale	10:1	Name:	Indications for Dial Drawing No. : 5R32D000
4		Date			
3		Drawn			
2		Checked	T. Hiruta		
1		Approved			
Material					
Heat Treatment		General Tolerances			
Hardness		Dimensions			
Plating		Angles			

This drawing is provisional and subject to our reconfirmation and/or revision without notice.

\*\*\* T I P W (01) \*\*\* (2100 1121) 00-06-22 065-413



7		Quantity		Cal. No. :
6		Unit	1/1000 mm	Parts:
5		Scale	20:1	
4		Date		065-413
3		Drawn		
2		Checked	T. Hiruta	Name:
1		Approved		SETTING STEM
Material				Drawing No. : 4130S000
Heat Treatment		General Tolerances		
Hardness		Dimensions		
Plating		Angles		