

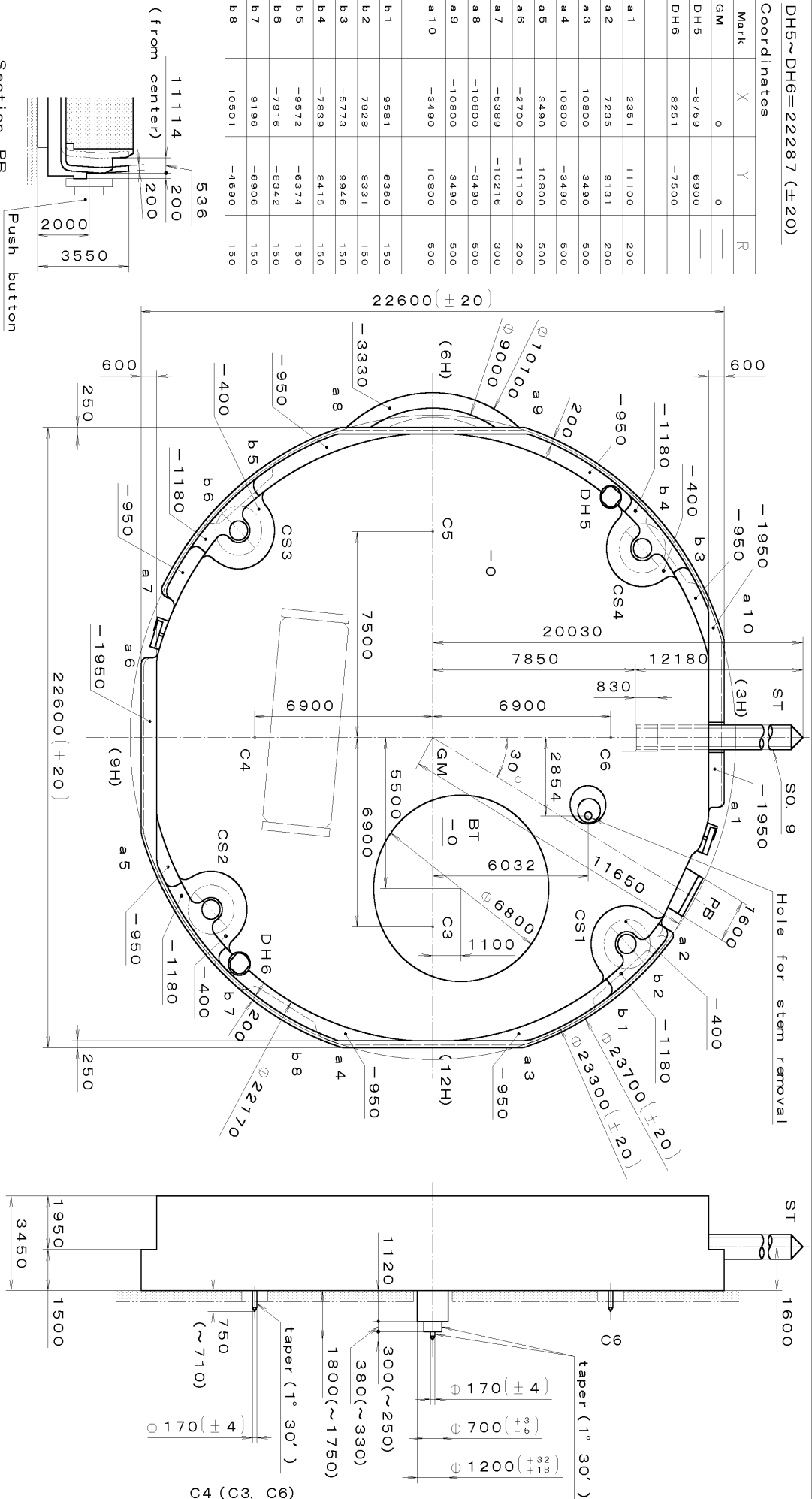
This drawing is provisional and subject to our reconfirmation and/or revision without notice.

*** TIPW 6P00 (01) *** (2100 1121) 01-02-07

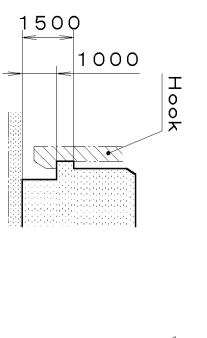
DH5~DH6=22287 (±20)

Coordinates

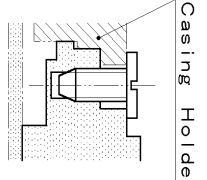
Mark	X	Y	R
GM	0	0	
DH5	-8759	6900	
DH6	8251	-7500	
a1	2951	11100	200
a2	7235	9131	200
a3	10800	3490	500
a4	10800	-3490	500
a5	3490	-10800	500
a6	-2700	-11100	200
a7	-5389	-10216	300
a8	-10800	-3490	500
a9	-10800	3490	500
a10	-3490	10800	500
b1	9581	6360	150
b2	7928	8331	150
b3	-5773	9346	150
b4	-7839	8415	150
b5	-9572	-6374	150
b6	-7916	-8342	150
b7	9196	-6906	150
b8	10501	-4690	150



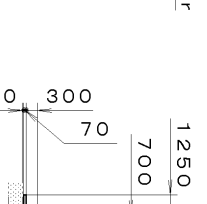
Section PB



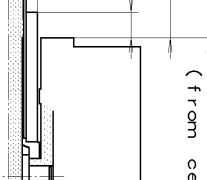
Section b1~b8



Section CS1~4

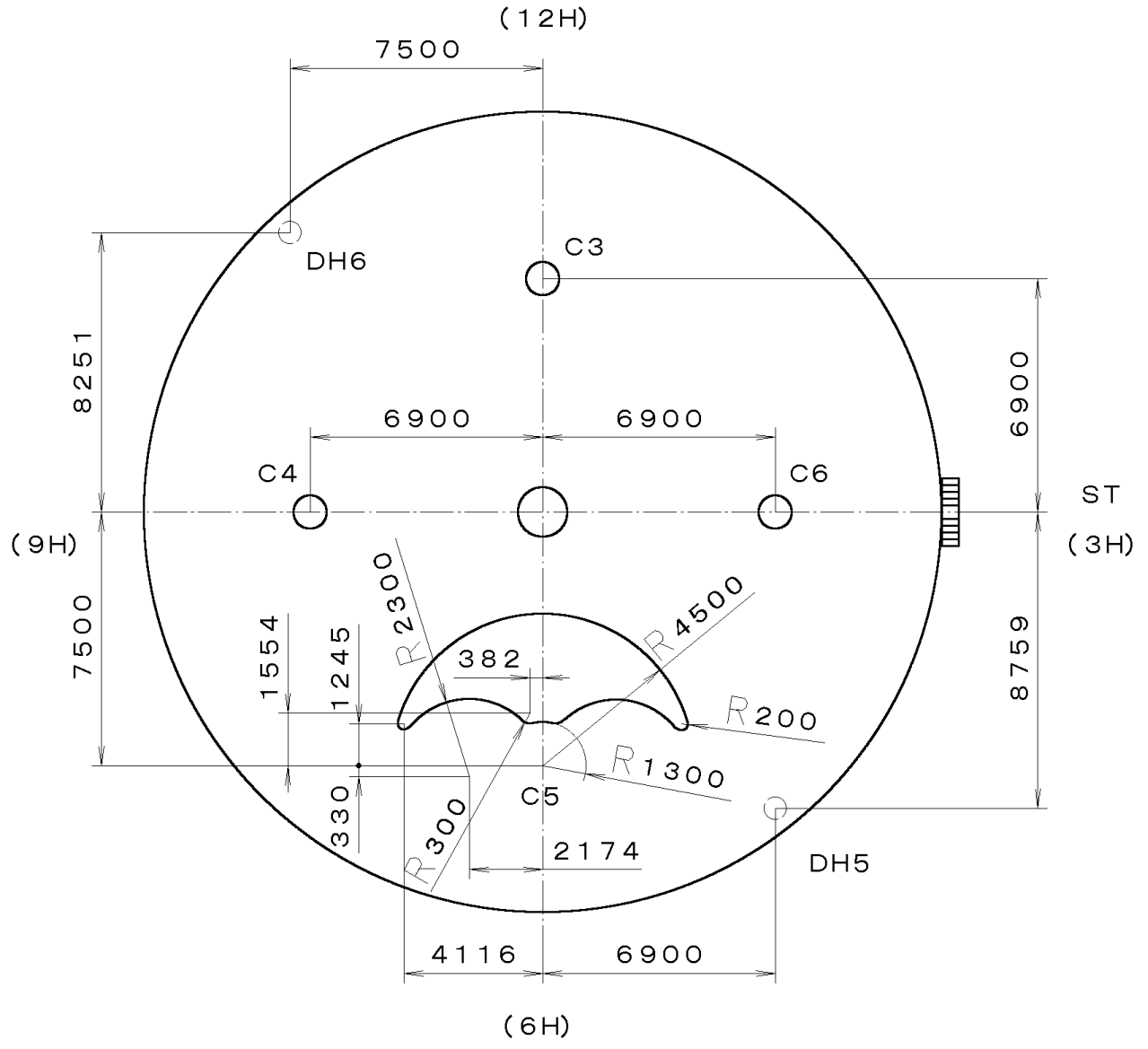


Section C5



Material	Quantity	Unit	Cal. No. :
Heat Treatment		1/1000 mm	6P00
Hardness		Scale	Parts:
Plating		7:1	Date
			Drawn
			Checked
			Approved
			T. Hiruta
			Name:
			Frame for Case
			Drawing No. : 6P00C000
			General Tolerances
			Dimensions
			Angles

This drawing is provisional and subject to our reconfirmation and/or revision without notice.



01-02-07

(2100 1121

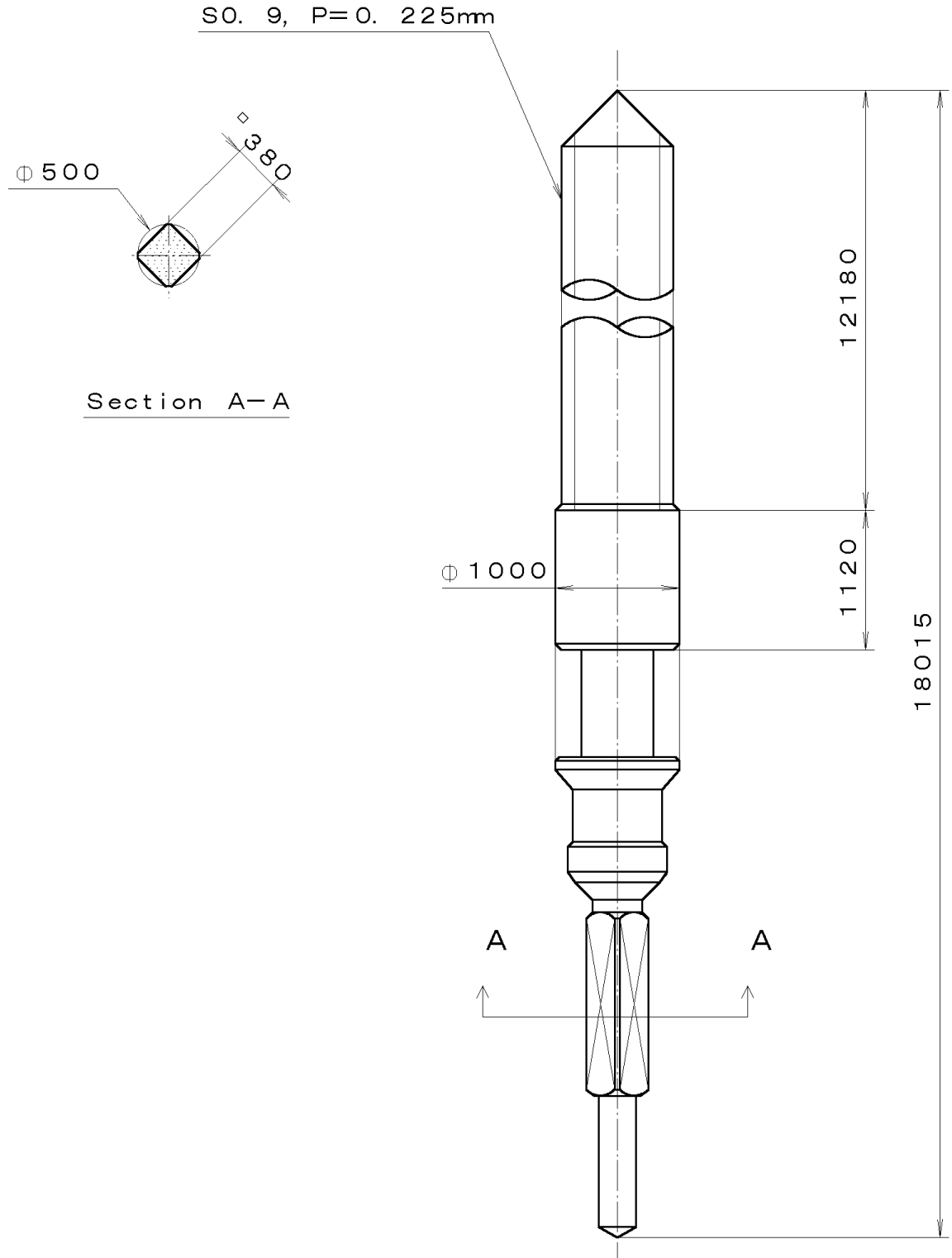
6P00-00A (01) ***

*** TIPW

7		Quantity		Cal. No. : 6P00-00A
6		Unit	1/1000 mm	
5		Scale	5:1	Parts:
4		Date		
3		Drawn		
2		Checked	T. Hiruta	Name:
1		Approved		Indications for Dial
Material				Drawing No. : 6P00D000
Heat Treatment		General Tolerances		
Hardness		Dimensions		
Plating		Angles		

This drawing is provisional and subject to our reconfirmation and/or revision without notice.

065-379 (01) *** (2100 1121) 00-06-23



7		Quantity		Cal. No. :
6		Unit	1/1000 mm	Parts:
5		Scale	20:1	
4		Date		
3		Drawn		Name:
2		Checked	T. Hiruta	
1		Approved		SETTING STEM
Material				Drawing No. : 3790S000
Heat Treatment		General Tolerances		
Hardness		Dimensions		
Plating		Angles		