

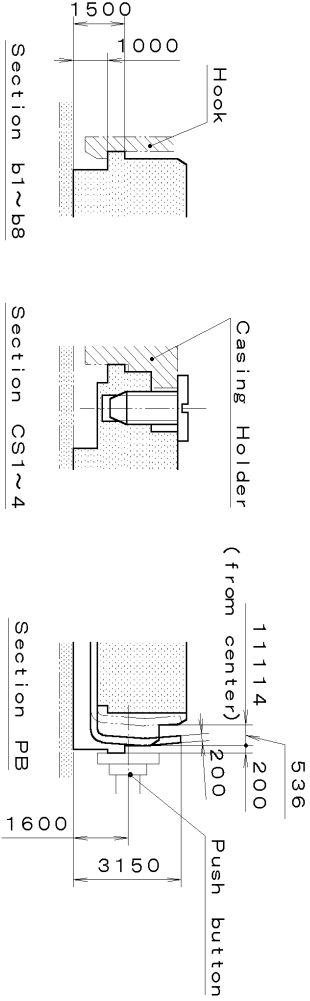
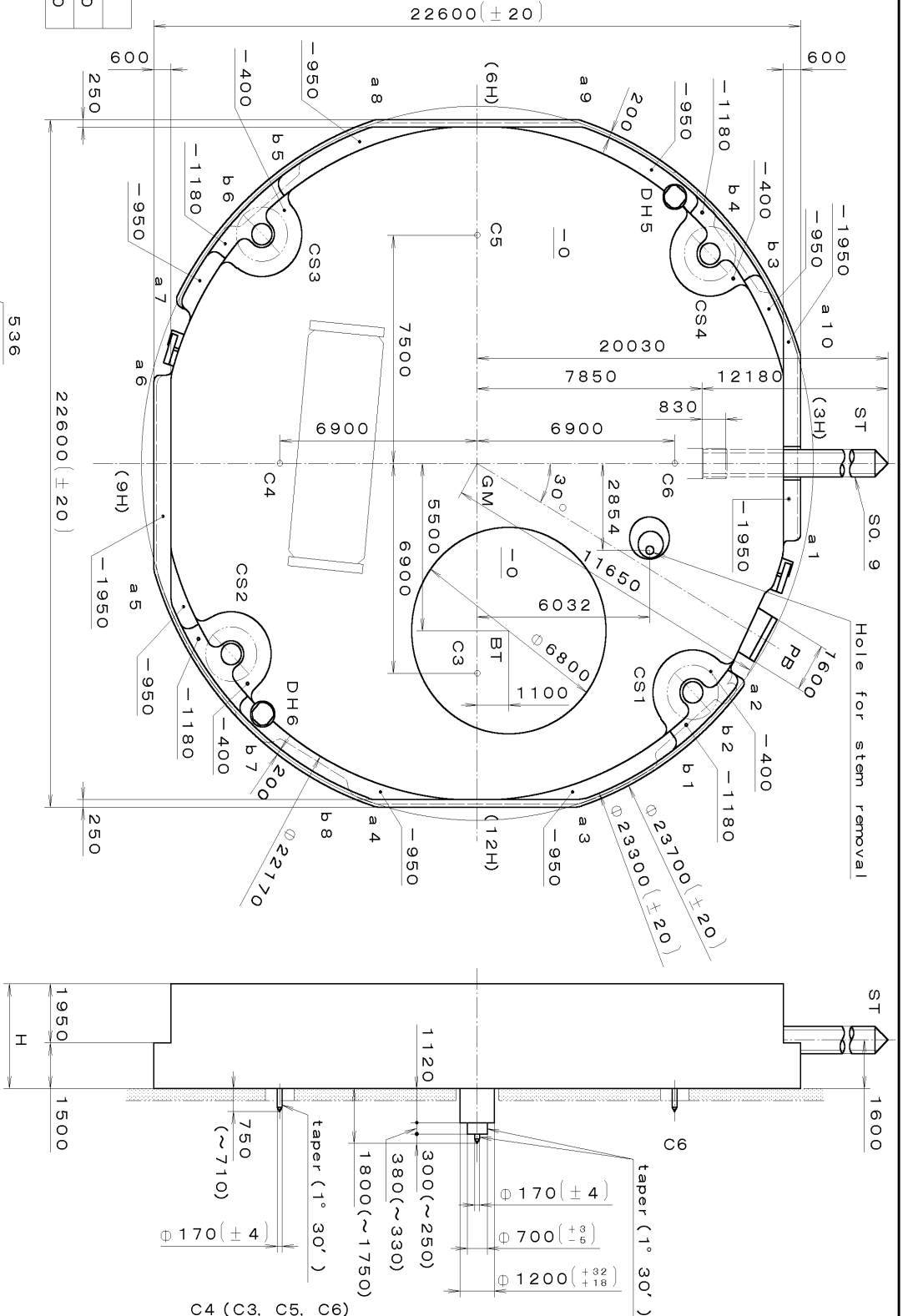
This drawing is provisional and subject to our reconfirmation and/or revision without notice.

xxx TIPW 6P09 (01) xxx (2100 1121) 00-07-19

DH5~DH6=22287 (±20)

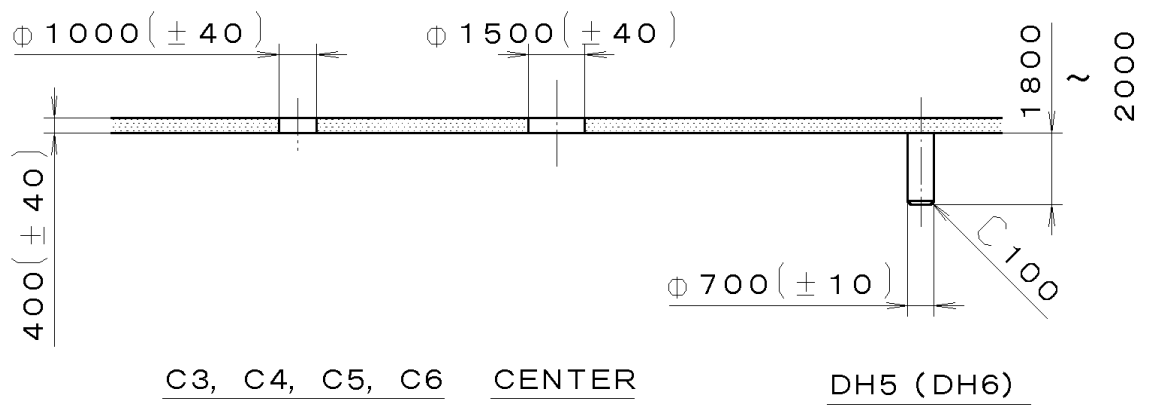
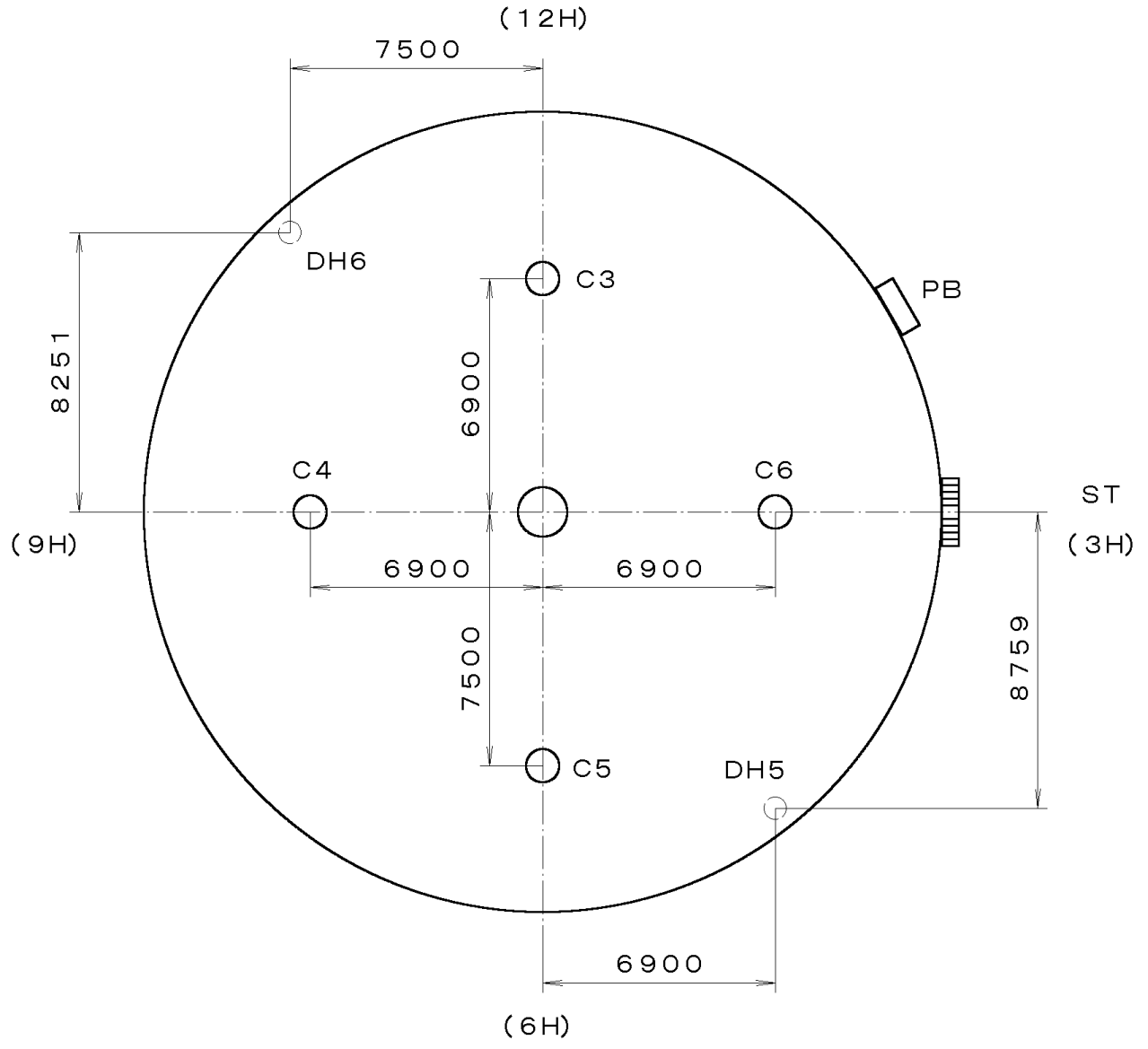
| Coordinates | | | |
|-------------|--------|--------|-----|
| Mark | X | Y | R |
| GM | 0 | 0 | — |
| DH5 | -8759 | 6900 | — |
| DH6 | 8251 | -7500 | — |
| a1 | 2351 | 11100 | 200 |
| a2 | 7235 | 9131 | 200 |
| a3 | 10800 | 3490 | 500 |
| a4 | 10800 | -3490 | 500 |
| a5 | 3490 | -10800 | 500 |
| a6 | -2700 | -11100 | 200 |
| a7 | -5389 | -10216 | 300 |
| a8 | -10800 | -3490 | 500 |
| a9 | -10800 | 3490 | 500 |
| a10 | -3490 | 10800 | 500 |
| b1 | 9581 | 6360 | 150 |
| b2 | 7928 | 8331 | 150 |
| b3 | -5773 | 9946 | 150 |
| b4 | -7839 | 8415 | 150 |
| b5 | -9572 | -6374 | 150 |
| b6 | -7916 | -8342 | 150 |
| b7 | 9196 | -6906 | 150 |
| b8 | 10501 | -4690 | 150 |

| With Battery strap | H |
|-----------------------|------|
| 3600 | |
| Without Battery strap | 3450 |



| Material | Quantity | Unit | Scale | Parts: |
|-------------------------|----------|------|-------|-------------------------|
| Heat Treatment | 1/1000 | mm | 7:1 | |
| Hardness | | | | |
| Plating | | | | |
| Material | | | | |
| Heat Treatment | | | | |
| Hardness | | | | |
| Plating | | | | |
| General Tolerances | | | | |
| Dimensions | | | | |
| Angles | | | | |
| Name: T. Hiruta | | | | Cal. No. : 6P09 |
| Approved | | | | Parts: |
| Drawing No. : 6P09C0000 | | | | Name: Frame for Case |
| | | | | Drawing No. : 6P09C0000 |

This drawing is provisional and subject to our reconfirmation and/or revision without notice.



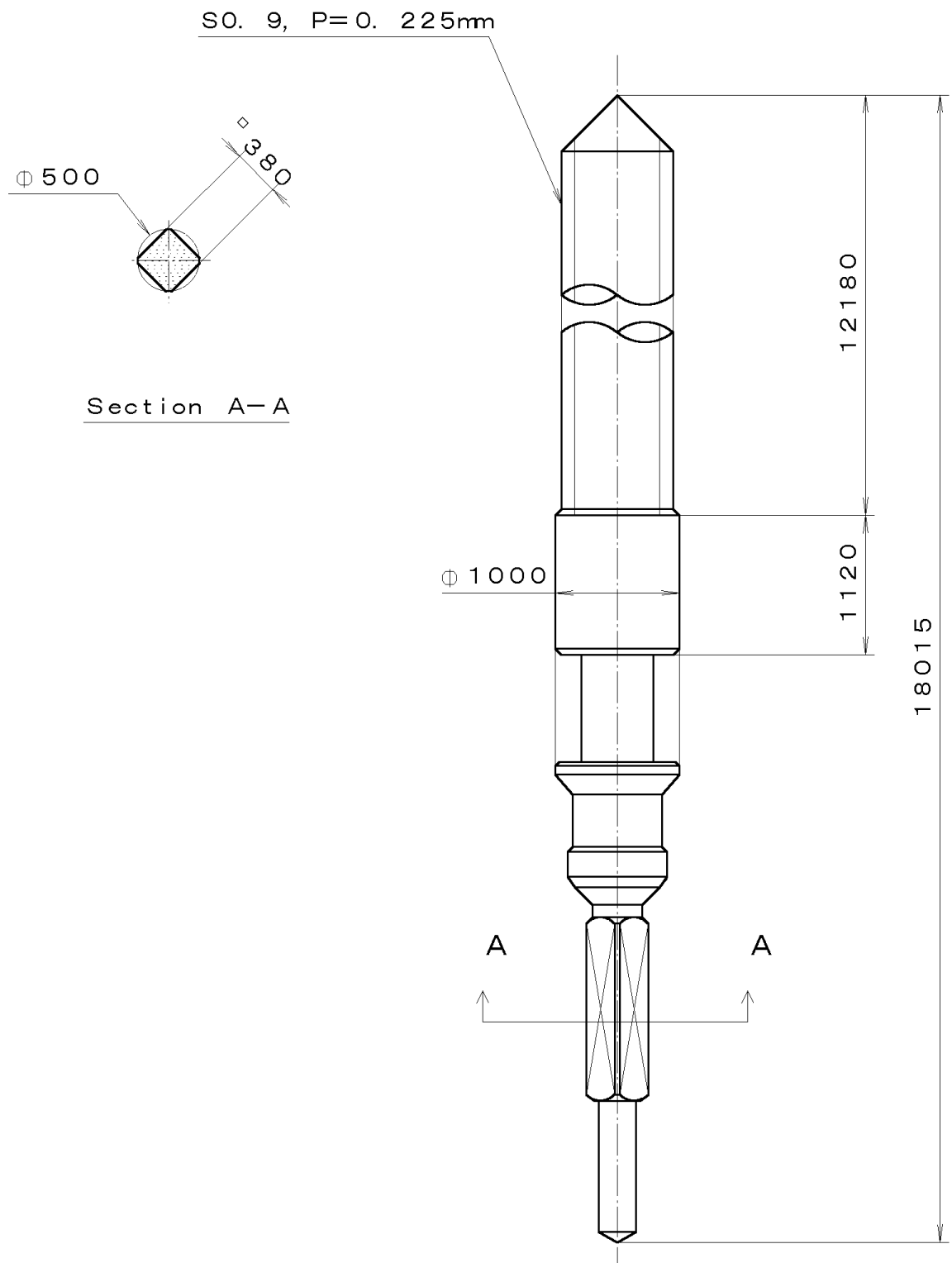
C3, C4, C5, C6 CENTER DH5 (DH6)

| | | | | |
|---|----------|--------------------|----------------------|-------------------------------|
| *** T I P W 6P09-00A (01) *** (2100 1121) | 7 | Quantity | | Cal. No. : 6P09-00A |
| | 6 | Unit | 1/1000 mm | |
| | 5 | Scale | 5:1 | Parts: |
| | 4 | Date | | |
| | 3 | Drawn | | |
| | 2 | Checked | T. Hiruta | Name: |
| 1 | Approved | | Indications for Dial | |
| Material | | | | Drawing No. : 6P09D000 |
| Heat Treatment | | General Tolerances | | |
| Hardness | | Dimensions | | |
| Plating | | Angles | | |

00-07-24

This drawing is provisional and subject to our reconfirmation and/or revision without notice.

065-379 (01) *** (2100 1121) 00-06-23



| | | | | |
|----------------|--|--------------------|-----------|------------------------|
| 7 | | Quantity | | Cal. No. : |
| 6 | | Unit | 1/1000 mm | Parts: |
| 5 | | Scale | 20:1 | |
| 4 | | Date | | |
| 3 | | Drawn | | Name: |
| 2 | | Checked | T. Hiruta | |
| 1 | | Approved | | SETTING STEM |
| Material | | | | Drawing No. : 3790S000 |
| Heat Treatment | | General Tolerances | | |
| Hardness | | Dimensions | | |
| Plating | | Angles | | |