

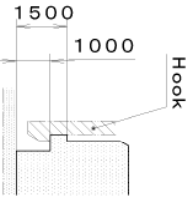
This drawing is provisional and subject to our reconfirmation and/or revision without notice.

\*\*\* TIPW 6P26 (01) \*\*\* (2100 1121) 03-01-30

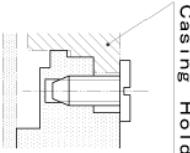
DH5~DH6=22287 (±20)

Coordinates			
Mark	X	Y	R
GM	0	0	—
DH5	-8758	6800	—
DH6	8251	-7500	—
a1	2351	11100	200
a2	7235	9131	200
a3	10800	3490	500
a4	10800	-3490	500
a5	3490	-10800	500
a6	-2700	-11100	200
a7	-5388	-10216	300
a8	-10800	-3490	500
a9	-10800	3490	500
a10	-3490	10800	500
b1	9581	6360	150
b2	7928	8331	150
b3	-5773	9946	150
b4	-7838	8415	150
b5	-9572	-6374	150
b6	-7916	-8342	150
b7	9196	-6306	150
b8	10501	-4890	150

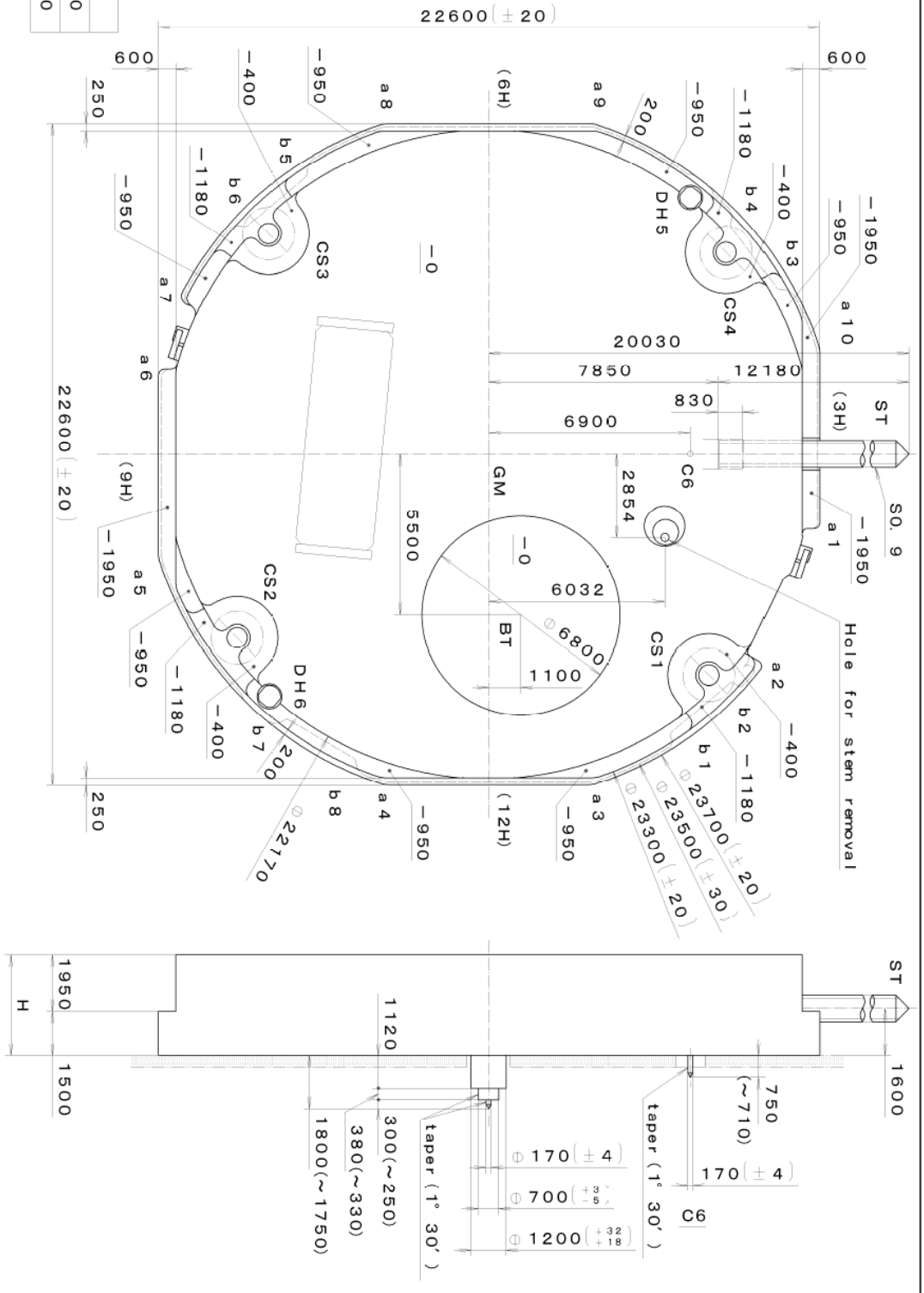
With Battery strap	H	3600
Without Battery strap		3450



Section b1~b8



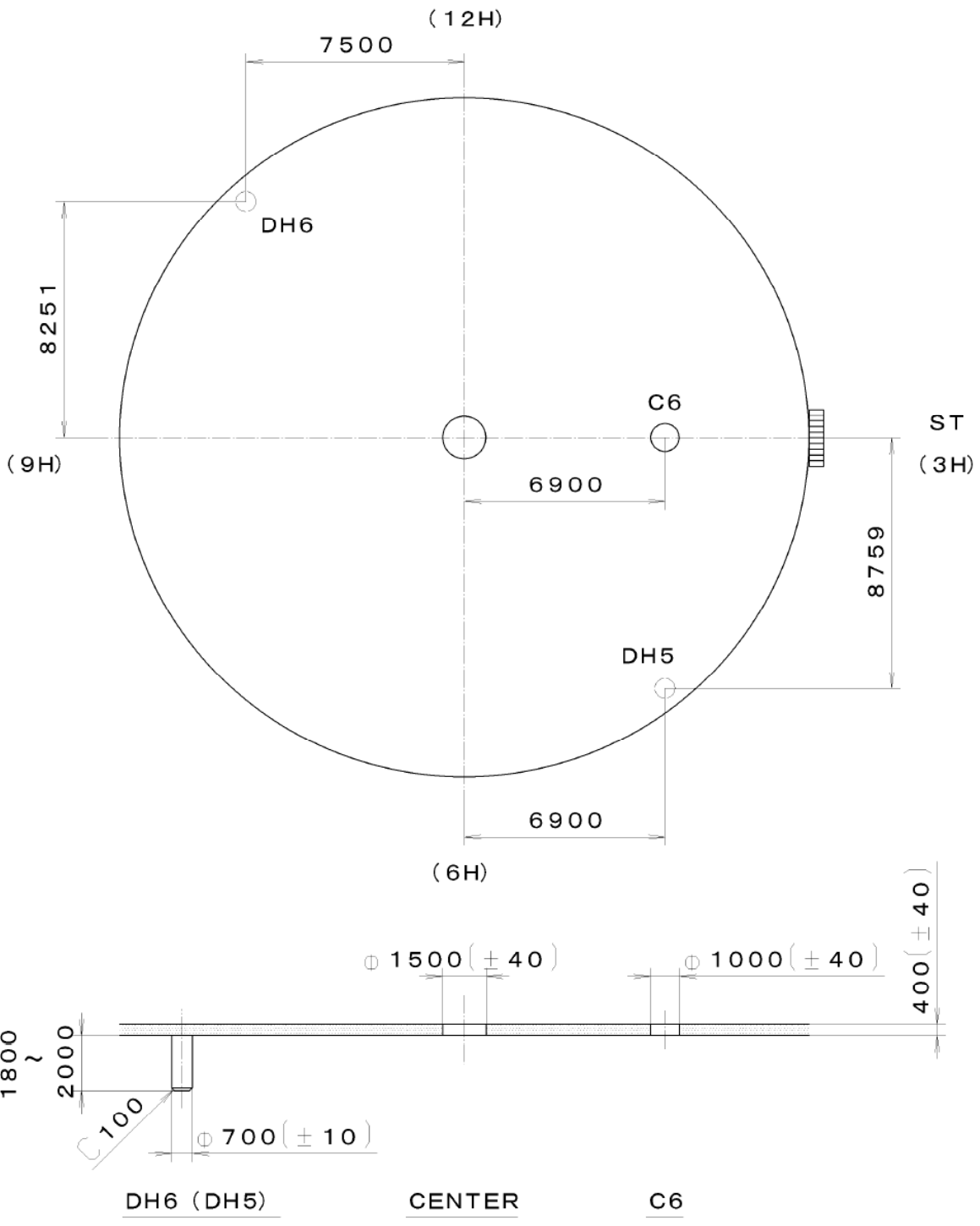
Section CS1~4



Quantity	Unit	1/1000 mm	Cal. No. : 6P26
Scale	7:1	Parts:	
Date		Drawn	
Checked	T. Hiruta	Name:	Frame for Case
Approved		Drawing No. :	6P26C000
Material		General Tolerances	
Heat Treatment		Dimensions	
Hardness		Angles	
Plating			

This drawing is provisional and subject to our reconfirmation and/or revision without notice.

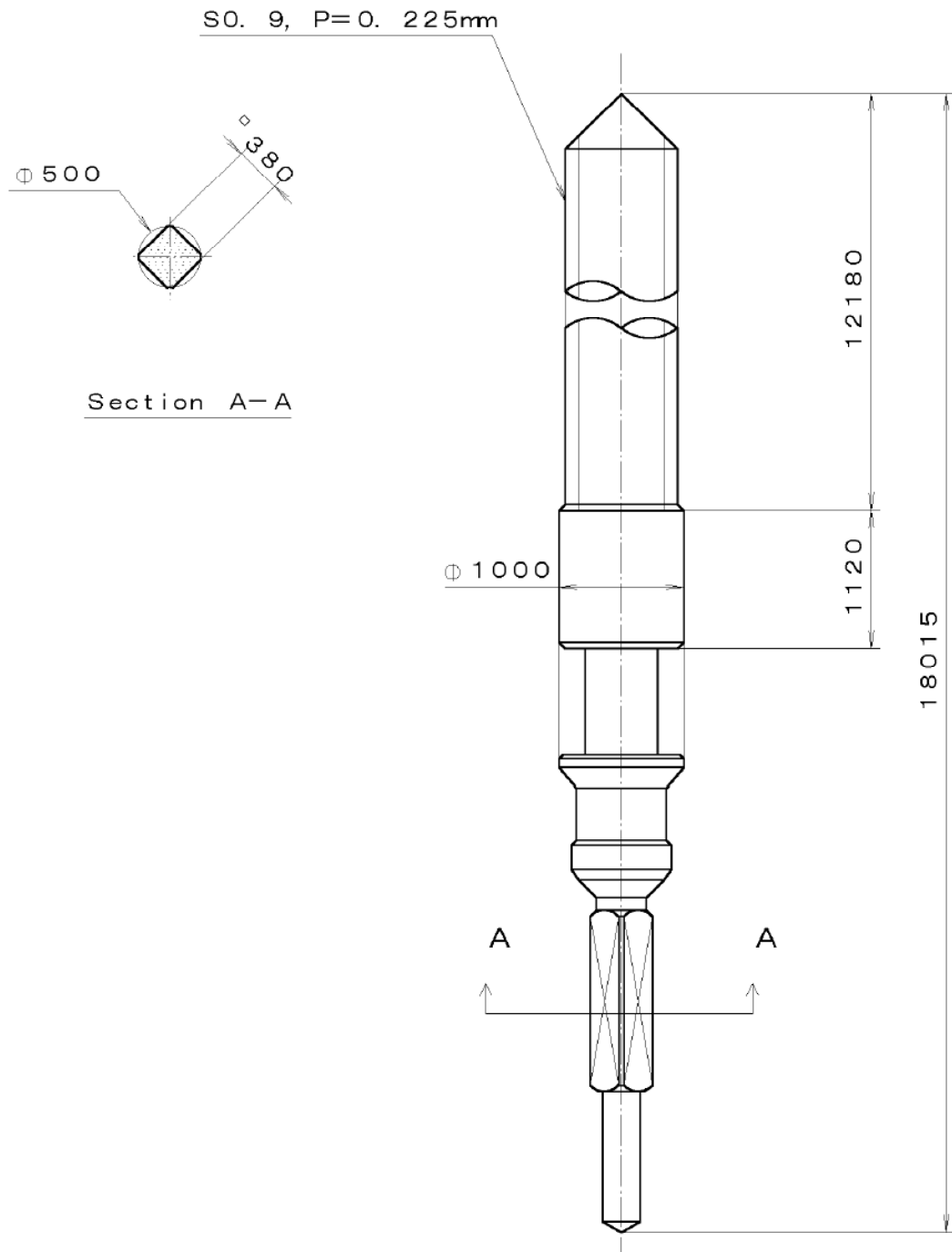
5P26-00A (01) \*\*\* (2100 1121) 03-01-27



Quantity		Ca. No. :	6P26-00A
Unit	1/1000 mm	Parts:	
Scale	5:1	Name:	Indications for Dial
Date		Drawing No. :	6P26D000
Drawn		<h1>MIYOTA</h1>	
Checked	T. Hiruta		
Approved			
Material			
Heat Treatment		General Tolerances	
Hardness		Dimensions	
Plating		Angles	

This drawing is provisional and subject to our reconfirmation and/or revision without notice

00-06-23  
 (2100-1121)  
 (01) KKK  
 C.65-379  
 KKK T.I.P.W.



Material		Quantity	Cal. No. :
Heat Treatment		Unit 1/1000 mm	Parts:
Hardness		Scale 20:1	
Plating		Date	065-379
		Drawn	
		Checked T. Hiruta	Name :
		Approved	SETTING STEM
			Drawing No. : 3790S000
		General Tolerances	<b>MIYOTA</b>
		Dimensions	
		Angles	