

## 6S50机心组装指南

When you use the blower to clean up dust, please make sure to set the date dial at "09", "19" or "29".

### 通知

当你用吹尘设备吹去机心灰尘时，请先将日历调到"09","19"或"29"后进行。

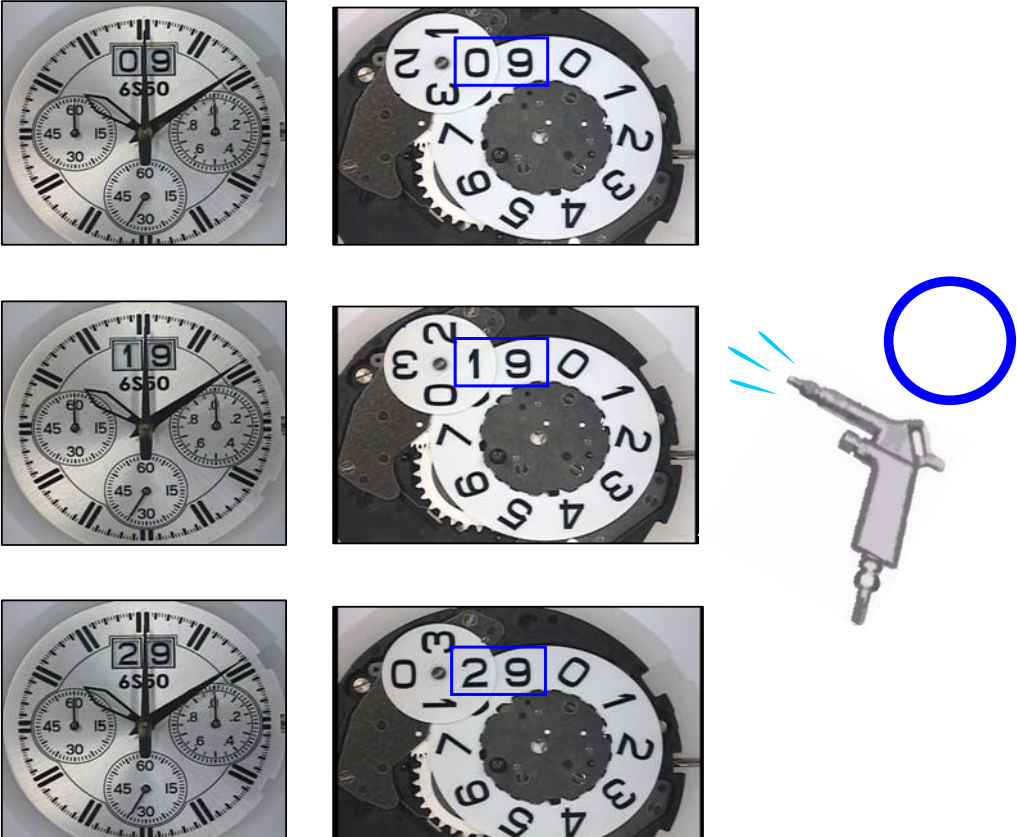
**NG**



\* When the date dial is **not** set at "09", "19", "29" please **do not** use the blower (not even over the dial).

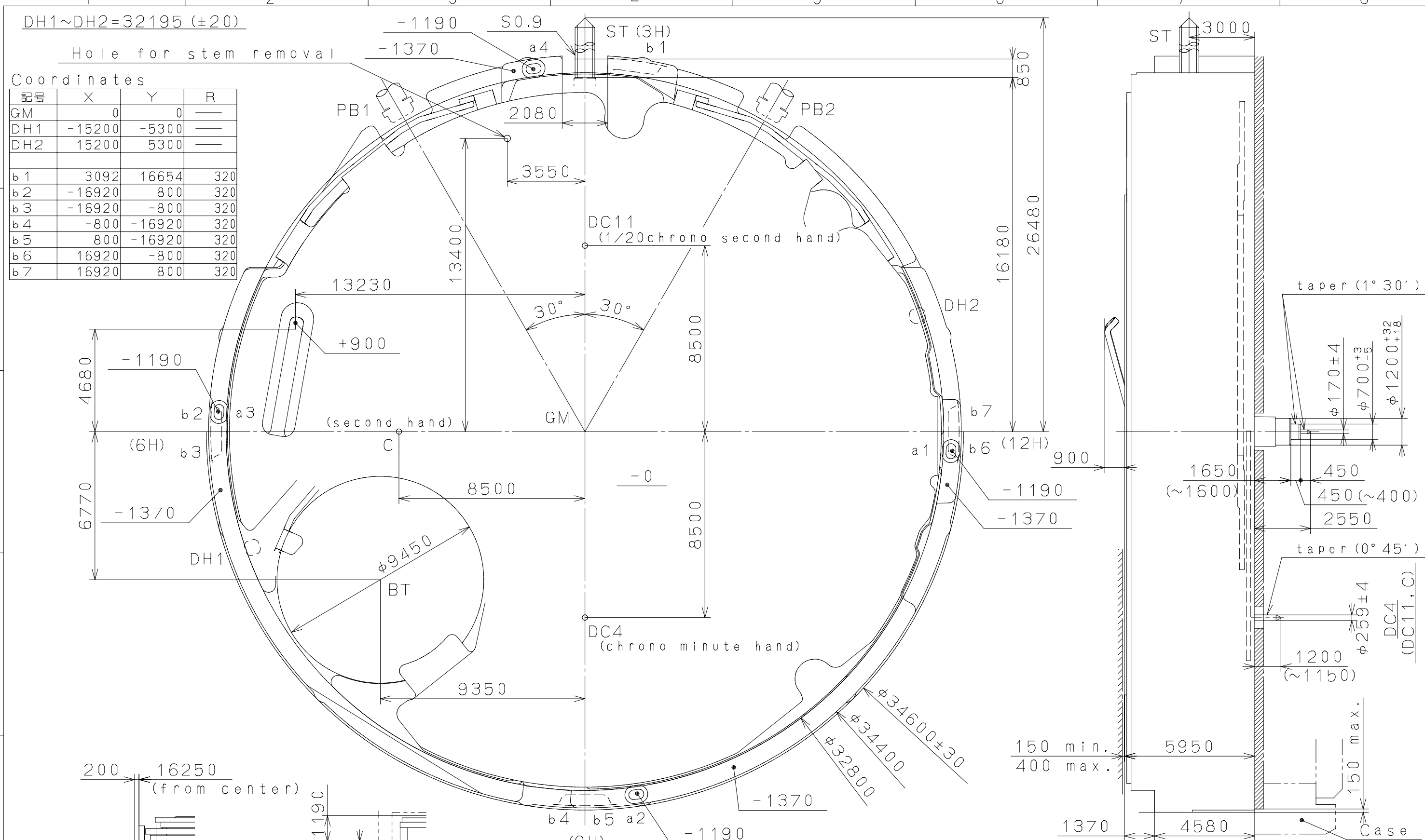
\* 当日历不在09, 19, 29位置时，勿对表盘使用吹尘设备

**OK**



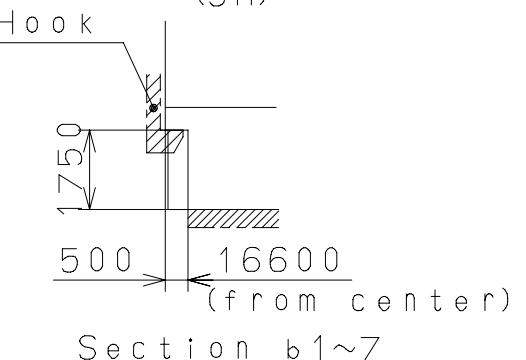
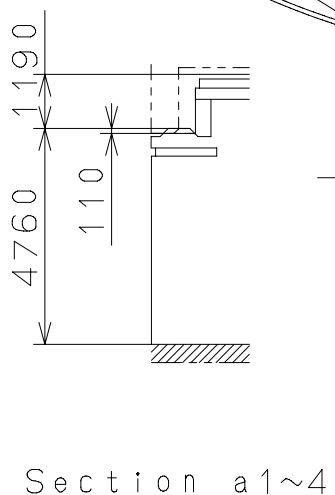
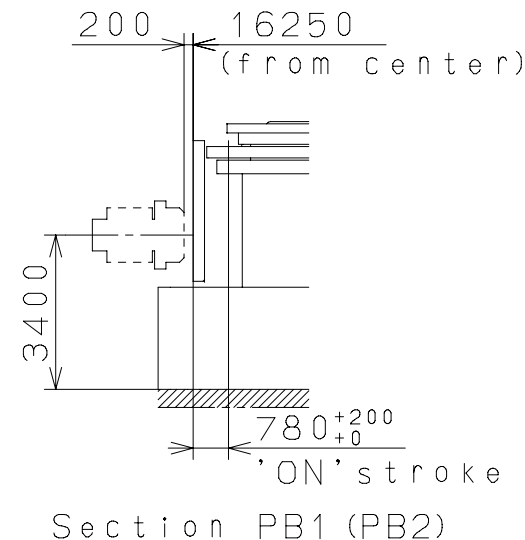
2011/12/12 (14:21:57)

This drawing is provisional and subject to our reconfirmation and/or revision without notice.



Coordinates

記号	X	Y	R
GM	0	0	—
DH1	-15200	-5300	—
DH2	15200	5300	—
b1	3092	16654	320
b2	-16920	800	320
b3	-16920	-800	320
b4	-800	-16920	320
b5	800	-16920	320
b6	16920	-800	320
b7	16920	800	320

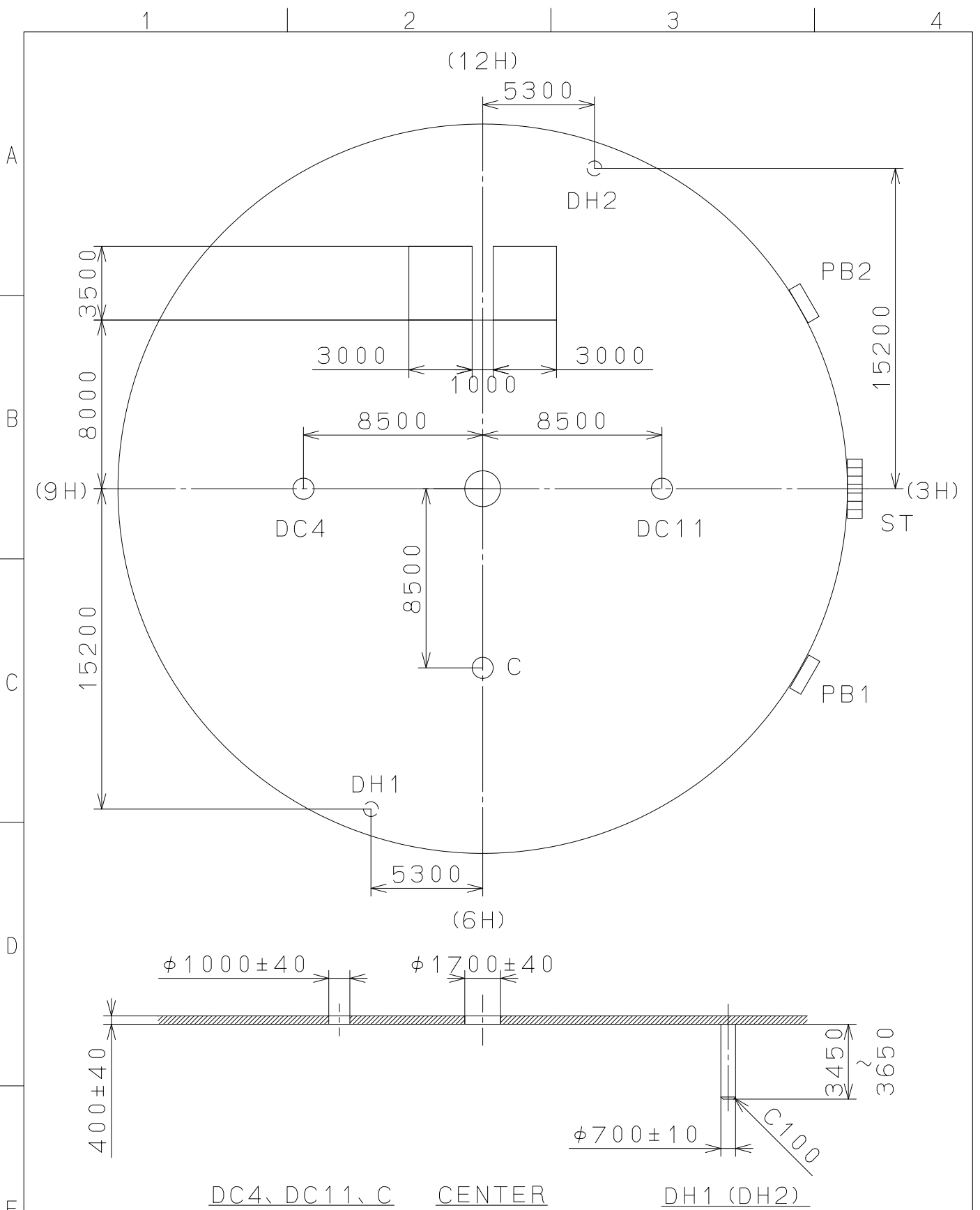


Quantity	Cal. NO.:	
Unit	6S50	
Scale	Parts No.:	
Date	Name:	
Drawn	Frame for Case	
Mark	Drawing No.: 6S50C001	
Date	Alterations	
Description	Approved	
Checked		
Drawn		
Material		General Tolerances
Heat Treatment		Dimensions
Hardness		Angles
Plating		

**MIYOTA**  
CITIZEN WATCH CO., LTD. TOKYO, JAPAN

2011/02/25 (10:10:16)

This drawing is provisional and subject to our reconfirmation and/or revision without notice.



DC4, DC11, C

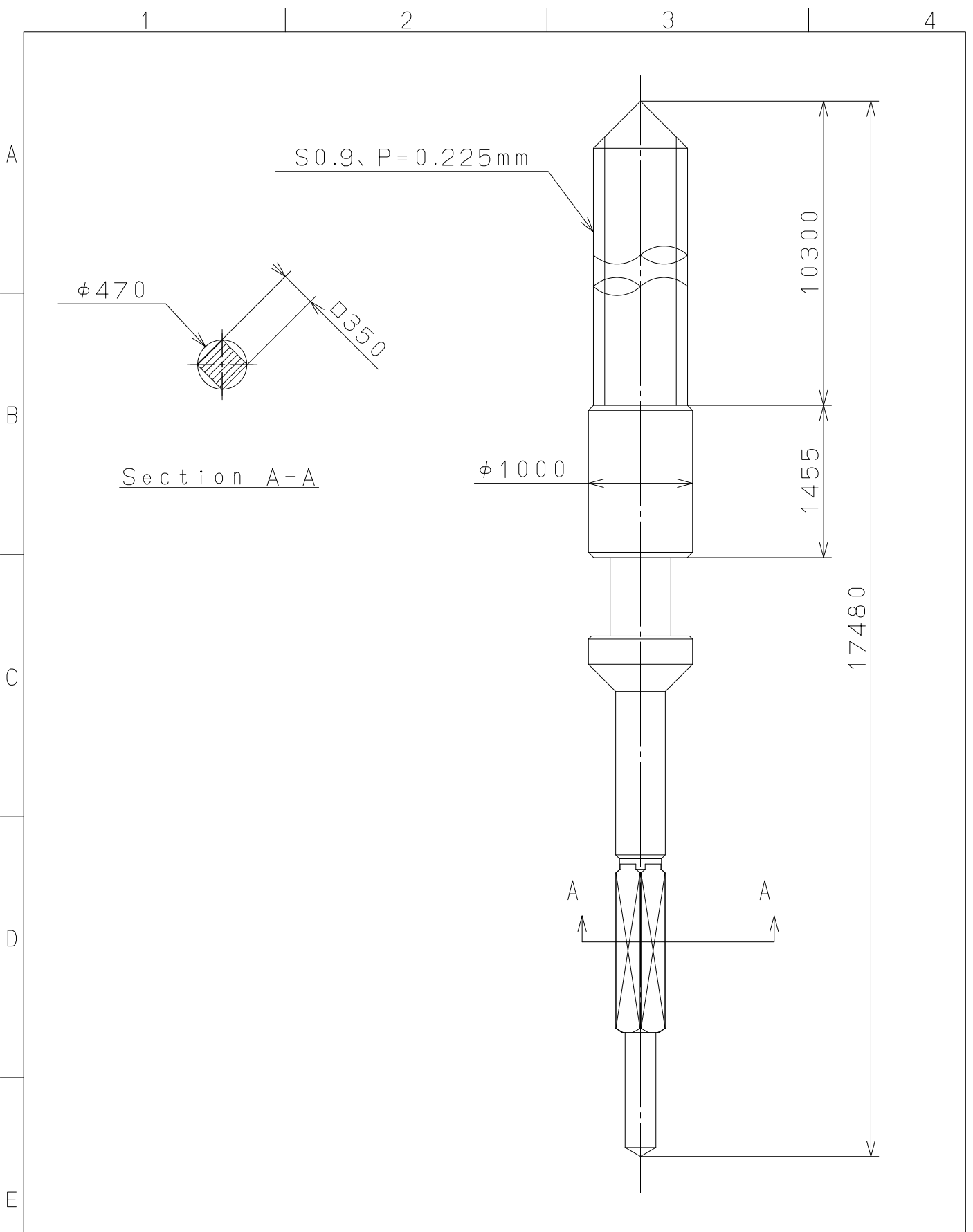
CENTER

DH1 (DH2)

△			Quantity		Cal. NO.:
△			Unit	1 / 1000 mm	6S50-00A
△			Scale	4 : 1	Parts No.:
△			Date		
△			Drawn		
Mark	Date	Description	Appr.	Checked	Name:
		Alterations		Approved	Indications for Dial
Material					Drawing No.: 6S50D000
Heat Treatment				General Tolerances	<b>MIYOTA</b>
Hardness				Dimensions	
Plating				Angles	
					CITIZEN WATCH CO., LTD. TOKYO, JAPAN

2010/07/26 (09:03:08)

This drawing is provisional and subject to our reconfirmation and/or revision without notice.



△5			Quantity		Cal.NO.:
△4			Unit	1/1000mm	
△3			Scale	20:1	Parts No.:
△2			Date		065-A13
△1			Drawn		
Mark	Date	Description	Appr.	Checked	Name:
		Alterations	Approved	N. Suzuki	SETTING STEM
Material					Drawing No.: A130S000
Heat Treatment			General Tolerances	<b>MIYOTA</b> CITIZEN WATCH CO., LTD. TOKYO, JAPAN	
Hardness			Dimensions		
Plating			Angles		