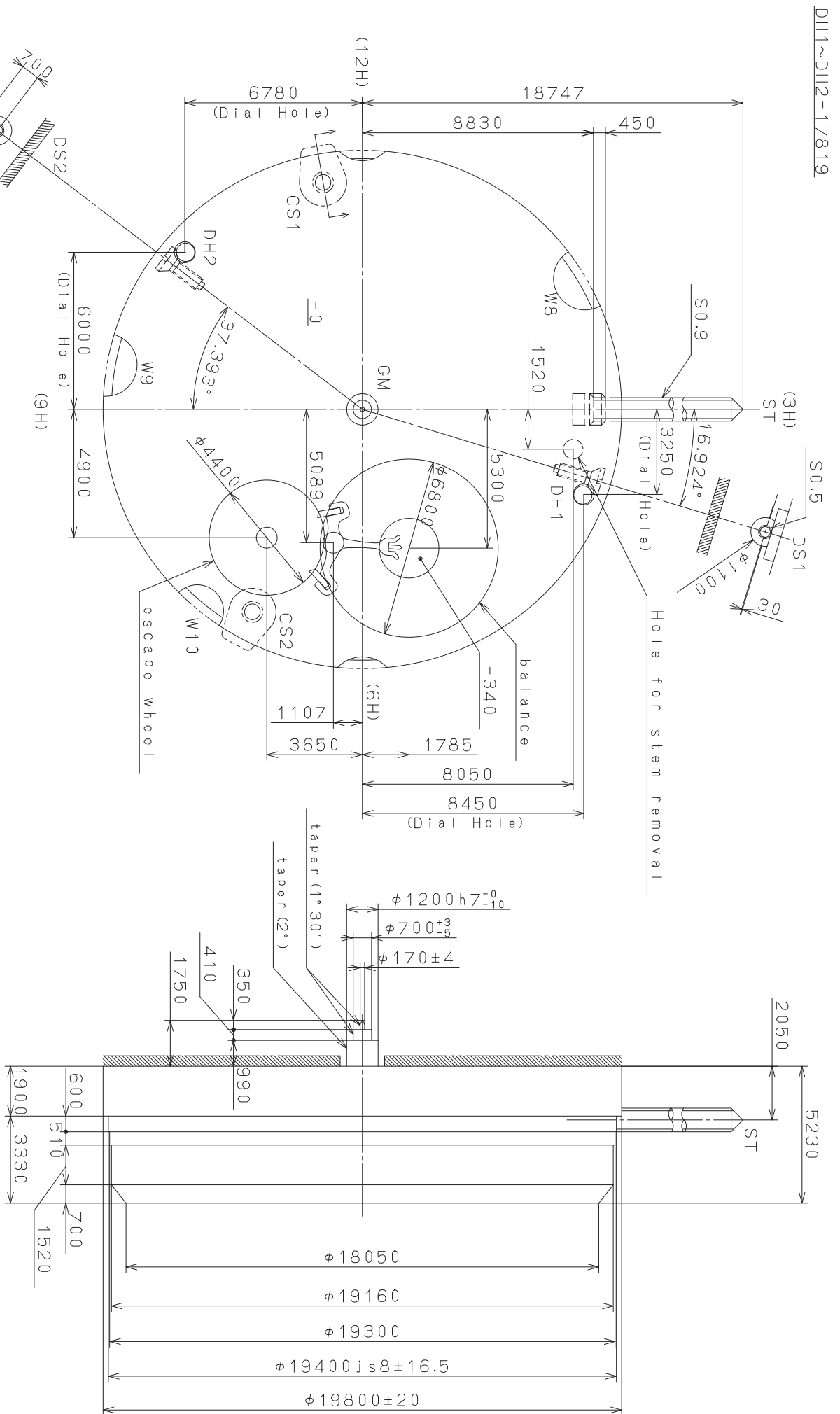


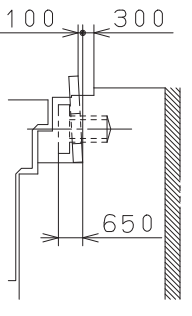
This drawing is provisional and subject to our reconfirmation and/or revision without notice.



Coordinates

| Mark | X | Y | R |
|------|-------|-------|------|
| GM | 0 | 0 | — |
| CS1 | -8670 | -1500 | — |
| CS2 | 7730 | -4200 | — |
| W8 | -5000 | 8500 | 1200 |
| W9 | -1700 | -9800 | 1200 |
| W10 | 7700 | -6300 | 1000 |

Section CS1 (CS2)

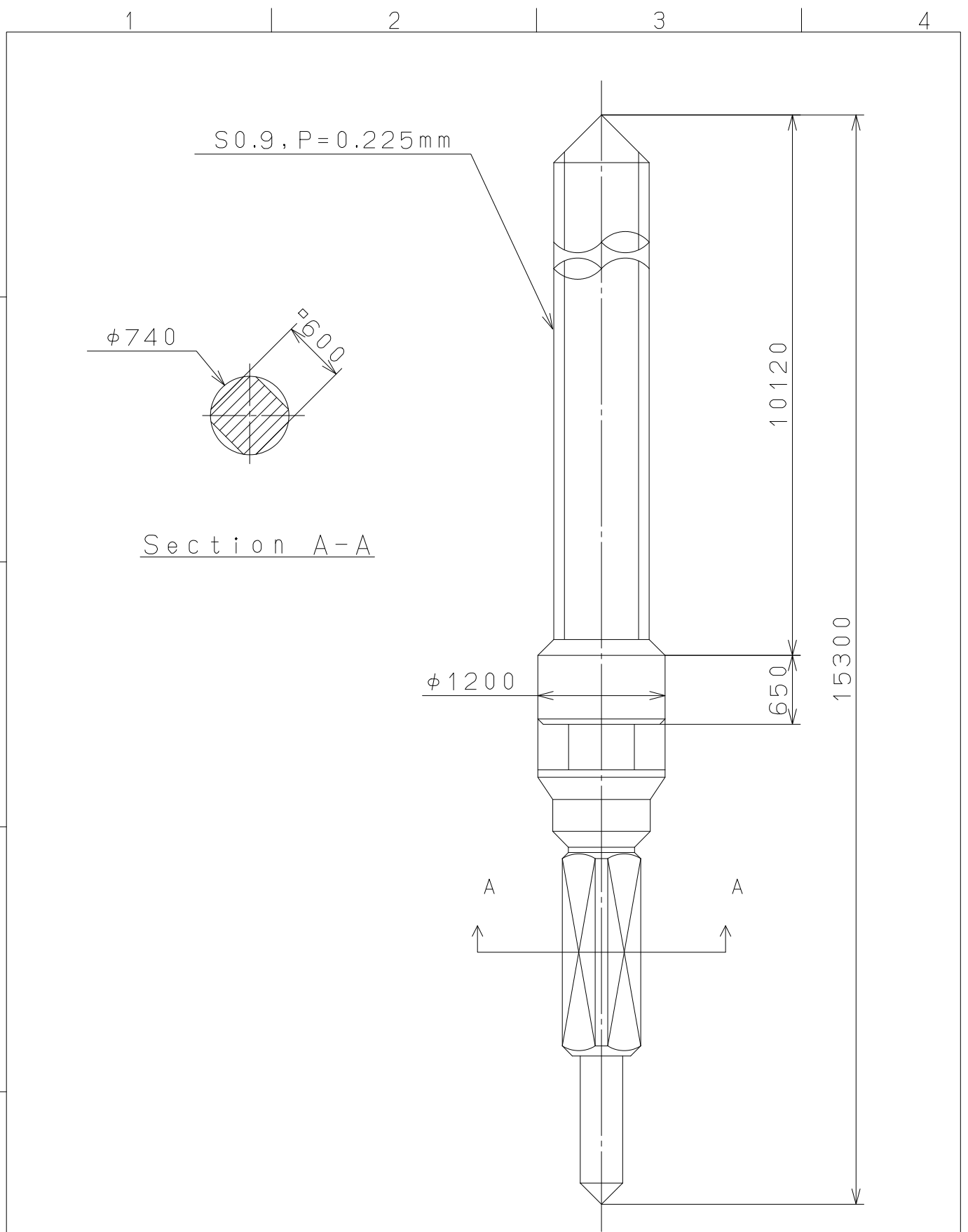


| Material | Quantity | Unit | Cal. NO.: |
|-----------------------|----------|-----------------------|-----------|
| Material | 1 | 1/1000 mm | 6T28 |
| Heat Treatment | | Scale | 7 : 1 |
| Hardness | | Date | |
| Plating | | Drawn | |
| | | Checked | |
| | | Approved | |
| Mark Date Description | | M. Kobayashi | |
| Alterations | | Name: | |
| | | Frame for Case | |
| | | Drawing No.: 6T28C000 | |
| General Tolerances | | | |
| Dimensions | | | |
| Angles | | | |

MIYOTA

CITIZEN WATCH CO., LTD. TOKYO, JAPAN

This drawing is provisional and subject to our reconfirmation and/or revision without notice.



| | | | | | |
|----------------|--------------------|-------------|----------|-----------------------|------------------------------------|
| △5 | | | Quantity | | Cal.NO.: |
| △4 | | | Unit | 1/1000mm | |
| △3 | | | Scale | 20:1 | Parts No.: |
| △2 | | | Date | | 065-117 |
| △1 | | | Drawn | | |
| Mark | Date | Description | Appro. | Checked | T.Hiruta |
| Alterations | | | Approved | Name: SETTING STEM | |
| Material | | | | | Drawing No.:1170S000 |
| Heat Treatment | General Tolerances | | | | MIYOTA |
| Hardness | Dimensions | | | | |
| Plating | Angles | | | | |
| | | | | | CITIZEN WATCH CO.,LTD. TOKYO,JAPAN |