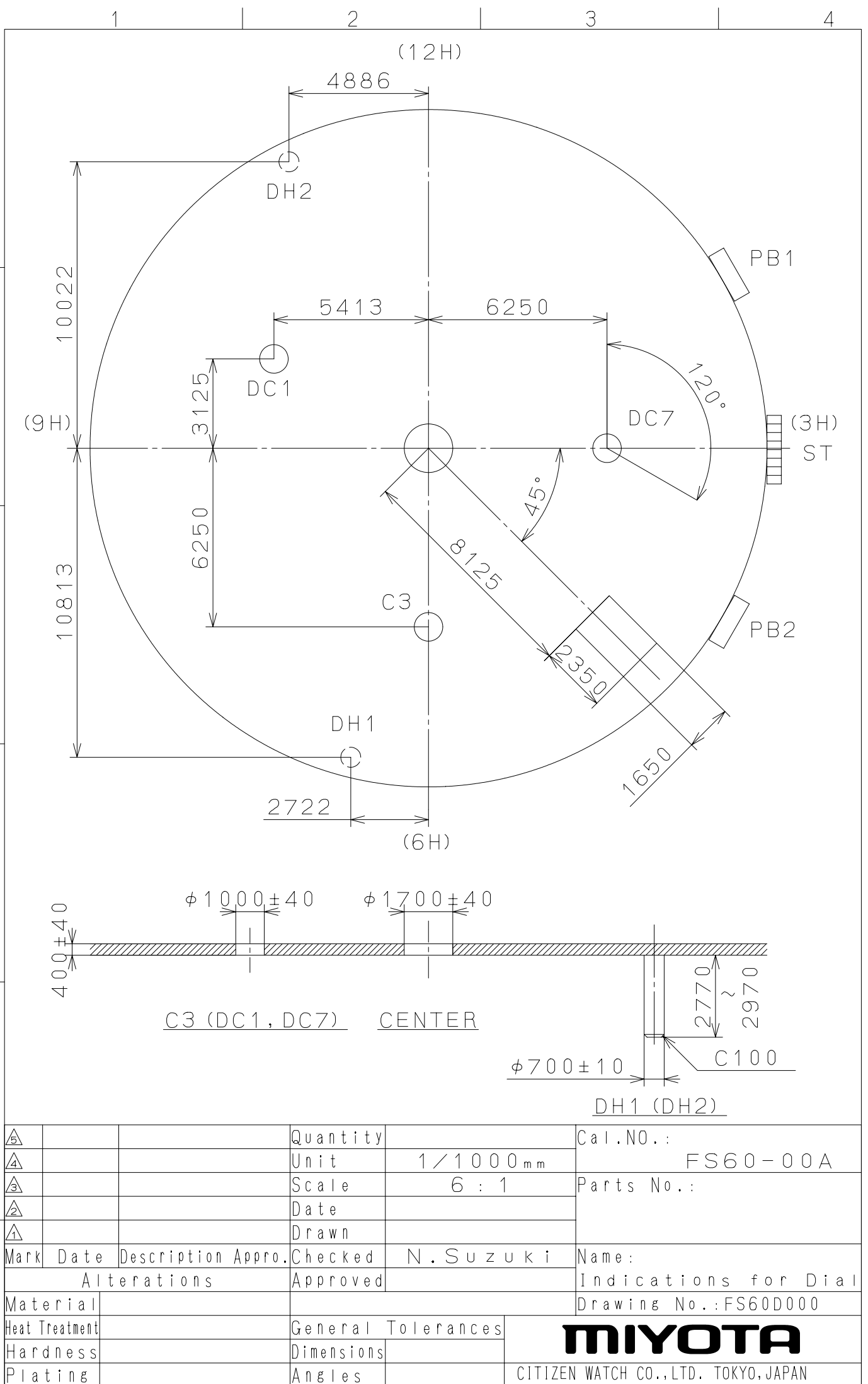


2007/07/04 (14:35:56)

This drawing is provisional and subject to our reconfirmation and/or revision without notice.



△			Quantity		Cal.NO.:
△			Unit	1/1000 <sub>mm</sub>	FS60-00A
△			Scale	6:1	Parts No.:
△			Date		
△			Drawn		
Mark	Date	Description	Appr.	Checked	Name:
		Alterations	Approved	N. Suzuki	Indications for Dial
Material					Drawing No.: FS60D000
Heat Treatment			General Tolerances	<b>MIYOTA</b> CITIZEN WATCH CO., LTD. TOKYO, JAPAN	
Hardness			Dimensions		
Plating			Angles		

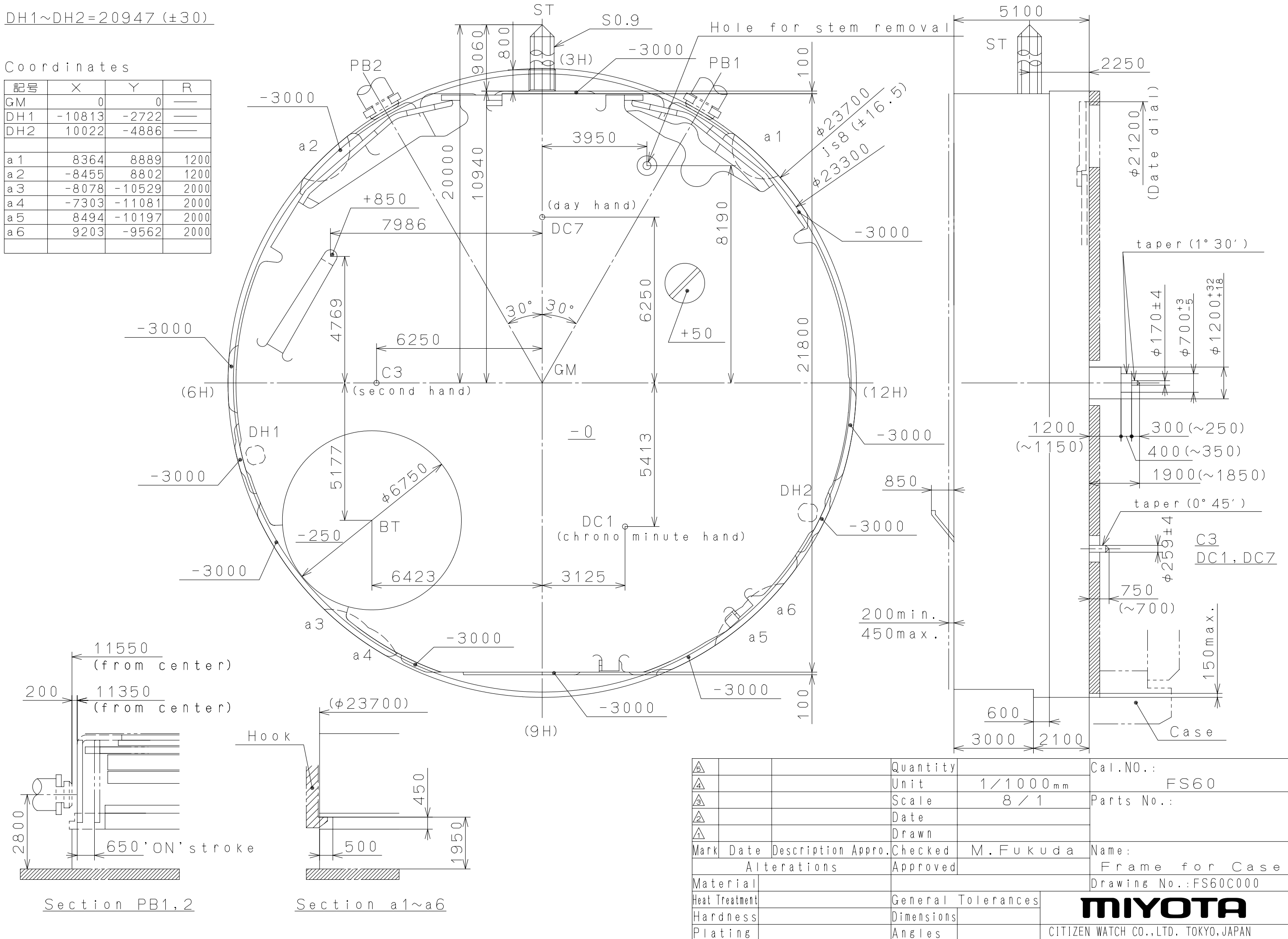
2006/07/06 (10:25:42)

This drawing is provisional and subject to our reconfirmation and/or revision without notice.

DH1~DH2=20947 (±30)

Coordinates

記号	X	Y	R
GM	0	0	—
DH1	-10813	-2722	—
DH2	10022	-4886	—
a1	8364	8889	1200
a2	-8455	8802	1200
a3	-8078	-10529	2000
a4	-7303	-11081	2000
a5	8494	-10197	2000
a6	9203	-9562	2000



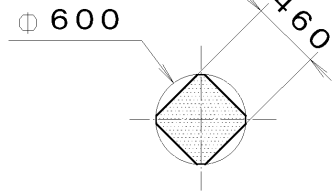
△5		Quantity		Cal.NO.:
△4		Unit	1/1000mm	FS60
△3		Scale	8/1	Parts No.:
△2		Date		
△1		Drawn		
Mark	Date	Description	Checked M. Fukuda	Name:
Alterations			Approved	Frame for Case
Material		General Tolerances		Drawing No.: FS60C000
Heat Treatment		Dimensions		
Hardness		Angles		
Plating				

**MIYOTA**

CITIZEN WATCH CO., LTD. TOKYO, JAPAN

This drawing is provisional and subject to our reconfirmation and/or revision without notice.

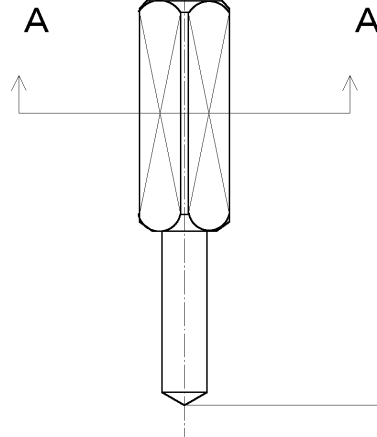
\*\*\* T I P W 065-549 (01) \*\*\* (2100 1121) 01-12-07



Section A-A

S0. 9, P=0. 225mm

⌀ 1000



7			Quantity		Cal. No. :
6			Unit	1/1000 mm	
5			Scale	20:1	Parts:
4			Date		065-549
3			Drawn		Name:
2			Checked	T. Hiruta	SETTING STEM
1			Approved		Drawing No. : 5490S000
Material					
Heat Treatment		General Tolerances			
Hardness		Dimensions		<b>CITIZEN</b> WATCH CO., LTD. TOKYO, JAPAN	
Plating		Angles			