

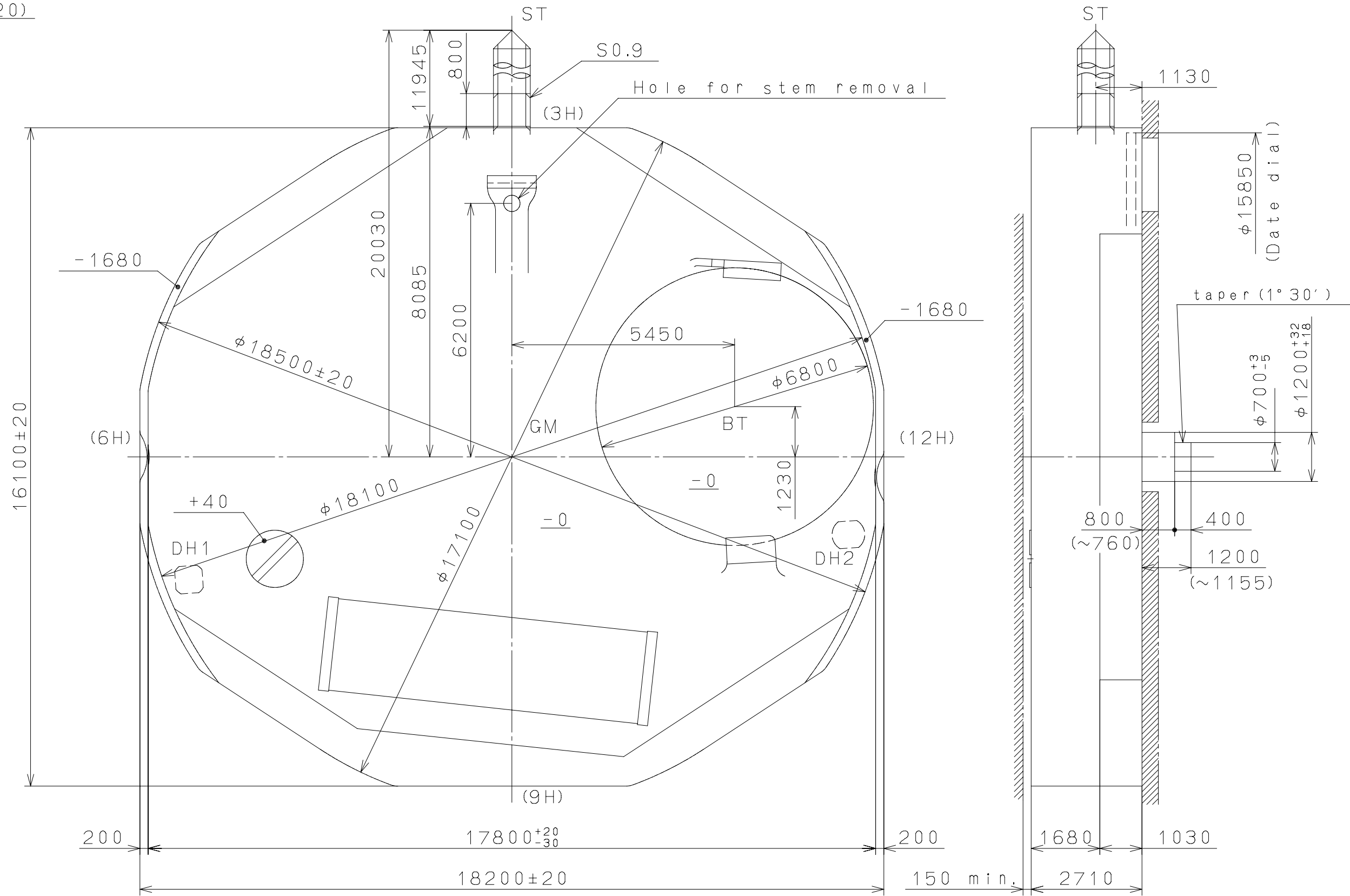
2011/12/05 (09:00:01)

This drawing is provisional and subject to our reconfirmation and/or revision without notice.

DH1~DH2=16171 (±20)

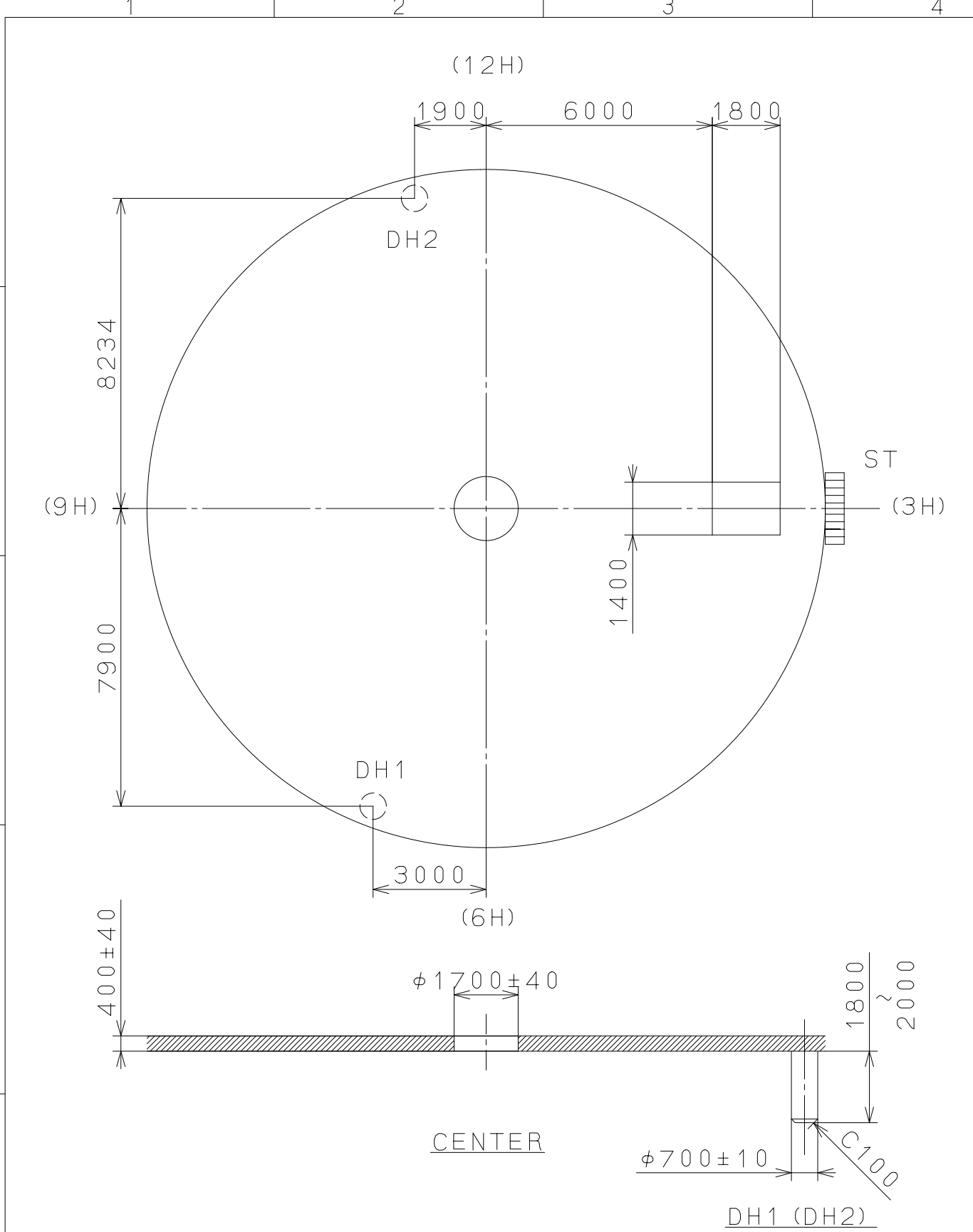
Coordinates

Mark	X	Y
GM	0	0
DH1	-7900	-3000
DH2	8234	-1900



△5			Quantity		Cal. NO.:
△4			Unit	1/1000mm	GL15
△3			Scale	10:1	Parts No.:
△2			Date		
△1			Drawn		
Mark	Date	Description	Appr.	Checked	Name:
		Alterations		M. Fukuda	Frame for Case
			Approved		Drawing No.: GL15C0AS
Material				General Tolerances	MIYOTA
Heat Treatment				Dimensions	
Hardness				Angles	
Plating					
					CITIZEN WATCH CO., LTD. TOKYO, JAPAN

This drawing is provisional and subject to our reconfirmation and/or revision without notice.



⑤			Quantity			Cal.NO.:GL15-00A
④			Unit	1 / 1000 mm		
③			Scale	7 / 1		Parts No.:
②				Date	Name	
①			Drawn			
Mark	Date	Description	Appr.	Checked	M.fukuda	Name:
Alterations			Approved			Indications for Dial
Material						Drawing No.:GL15D000
Heat Treatment						
Hardness						
Plating						
	General Tolerances					
	Dimensions					
	Angles					