

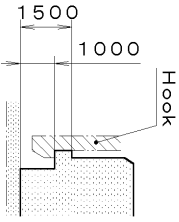
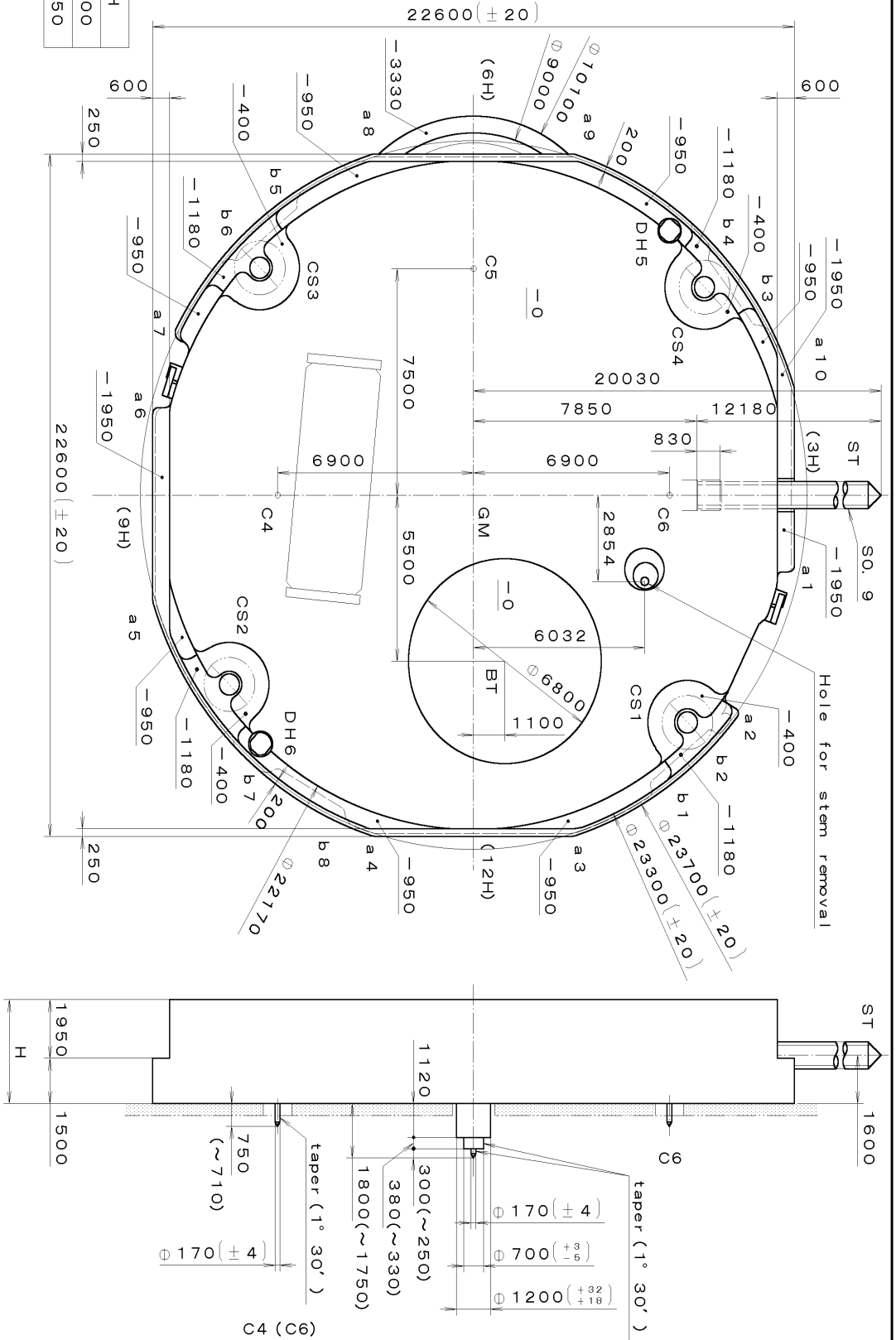
This drawing is provisional and subject to our reconfirmation and/or revision without notice.

xxx T1PW 6P25 (01) xxx (2100 1121 ) 00-07-25

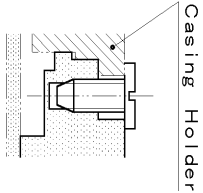
DH5~DH6=22287 (±20)

Coordinates			
Mark	X	Y	R
GM	0	0	—
DH5	-9759	6900	—
DH6	8251	-7500	—
a1	2351	11100	200
a2	7235	9131	200
a3	10800	3490	500
a4	10800	-3490	500
a5	3490	-10800	500
a6	-2700	-11100	200
a7	-5389	-10216	300
a8	-10800	-3490	500
a9	-10800	3490	500
a10	-3490	10800	500
b1	9591	6360	150
b2	7928	8331	150
b3	-5773	9946	150
b4	-7839	8415	150
b5	-9572	-6374	150
b6	-7916	-8342	150
b7	9196	-6906	150
b8	10501	-4690	150

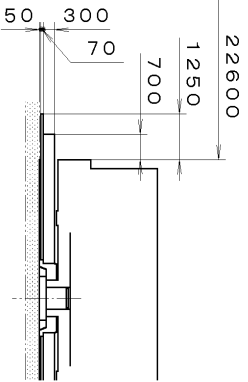
With Battery strap	H
3600	
Without Battery strap	3450



Section b1~b8



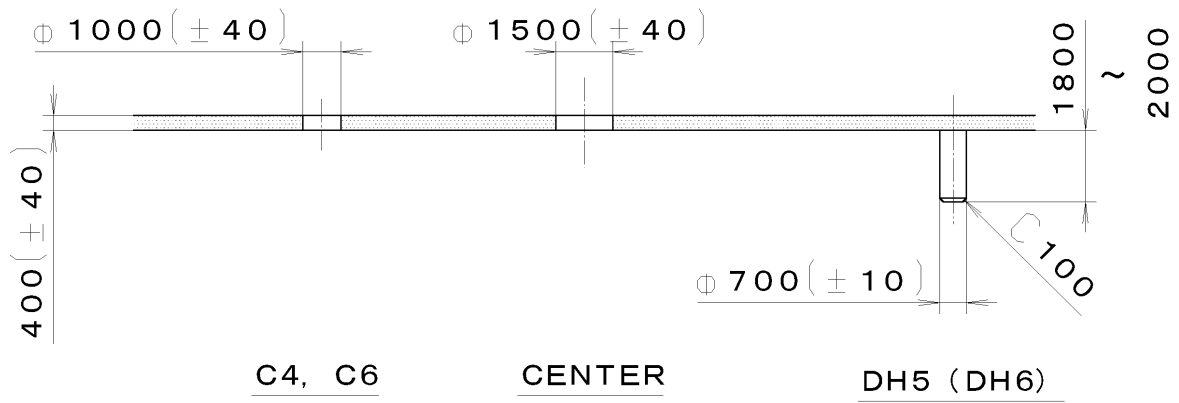
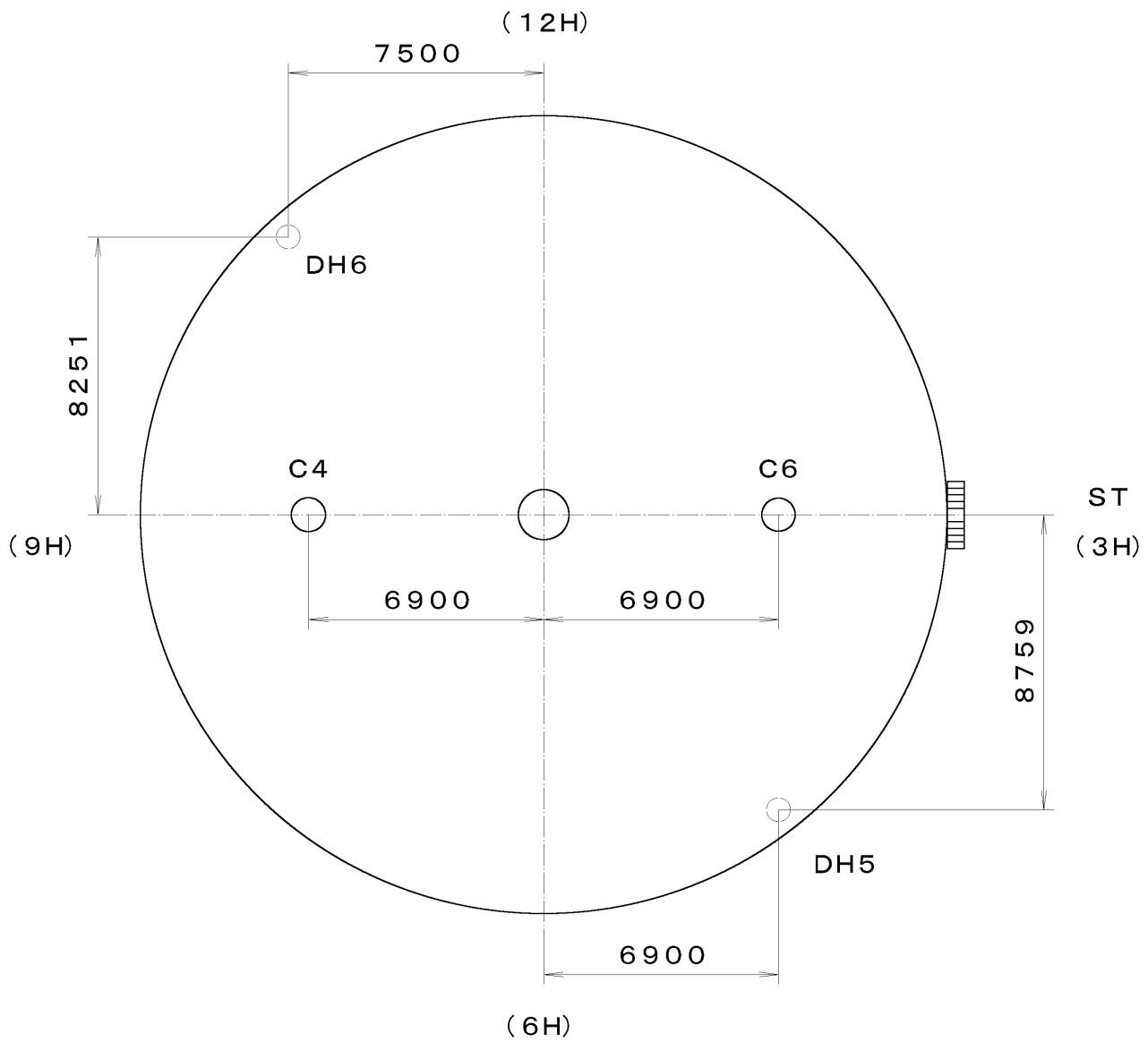
Section CS1~4



Section C5

Quantity	Unit	Scale	Cal. No. :
1	1/1000 mm	7:1	6P25
Material			Name: Frame for Case
Heat Treatment			
Hardness			Drawing No. : 6P25C0000
Plating			
General Tolerances			MIYOTA
Dimensions			
Angles			

This drawing is provisional and subject to our reconfirmation and/or revision without notice.



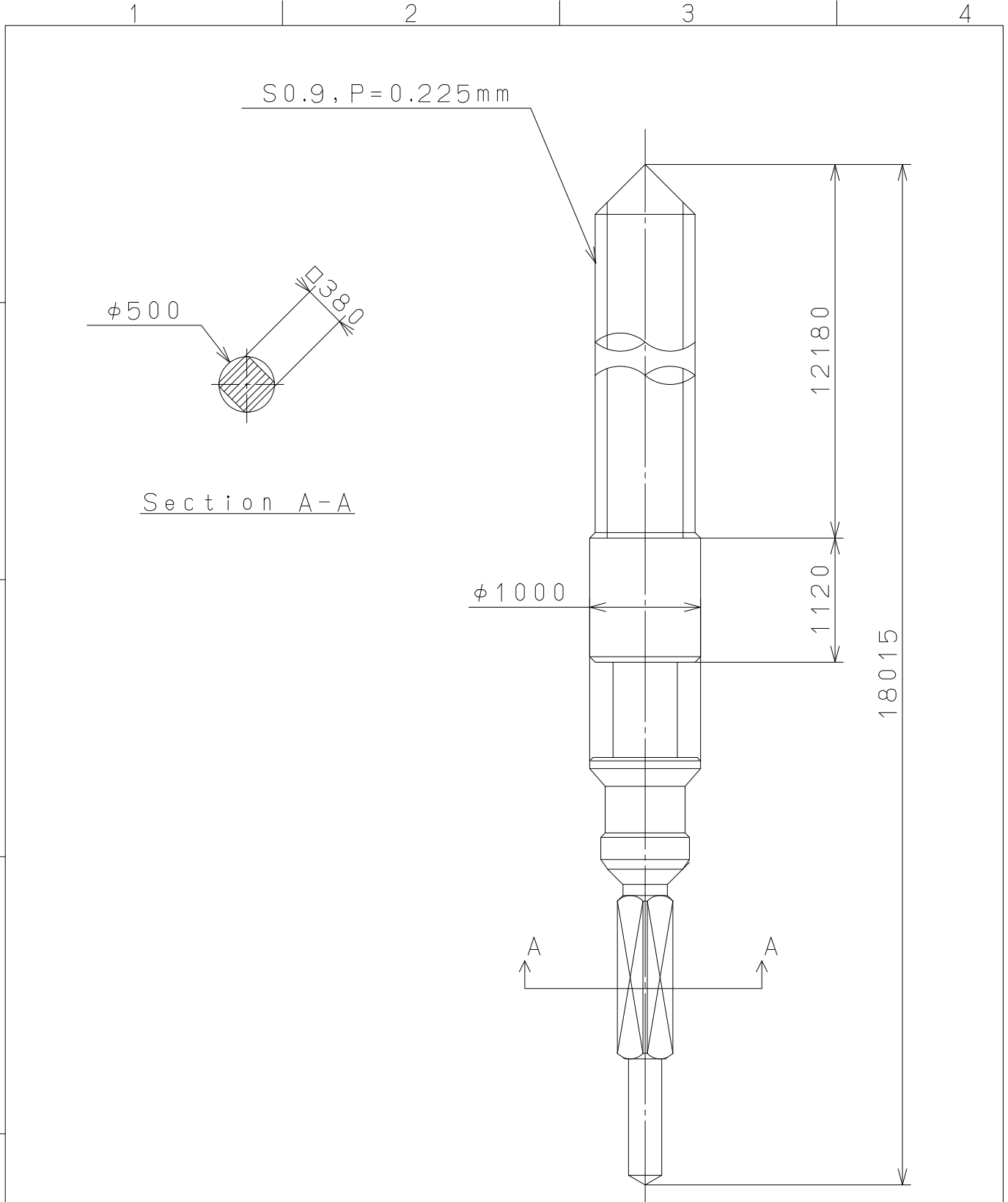
\*\*\* T I P W 6P25-00A (01) \*\*\* (2100 1121) 01-12-07

7			Quantity		Cal. No. : <b>6P25-00A</b>
6			Unit	1/1000 mm	Parts:
5			Scale	5:1	
4			Date		Name : <b>Indications for Dial</b>
3			Drawn		
2			Checked	T. Hiruta	
1			Approved		Drawing No. : <b>6P25D001</b>
Material					<b>MIYOTA</b>
Heat Treatment			General Tolerances		
Hardness			Dimensions		
Plating			Angles		

2010/05/12 (17:15:34)

This drawing is provisional and subject to our reconfirmation and/or revision without notice.

A  
B  
C  
D  
E  
F



⑤			Quantity		Cal.NO.:
④			Unit	1/1000mm	
③			Scale	20:1	Parts No.:
②			Date		065-379
①			Drawn		
Mark	Date	Description	Appro.	Checked	T.Hiruta
Alterations			Approved	Name:	
			SETTING STEM		
Material					Drawing No.:3790S000
Heat Treatment					<b>MIYOTA</b>
Hardness					
Plating					
			General Tolerances	CITIZEN WATCH CO.,LTD. TOKYO,JAPAN	
			Dimensions		
			Angles		