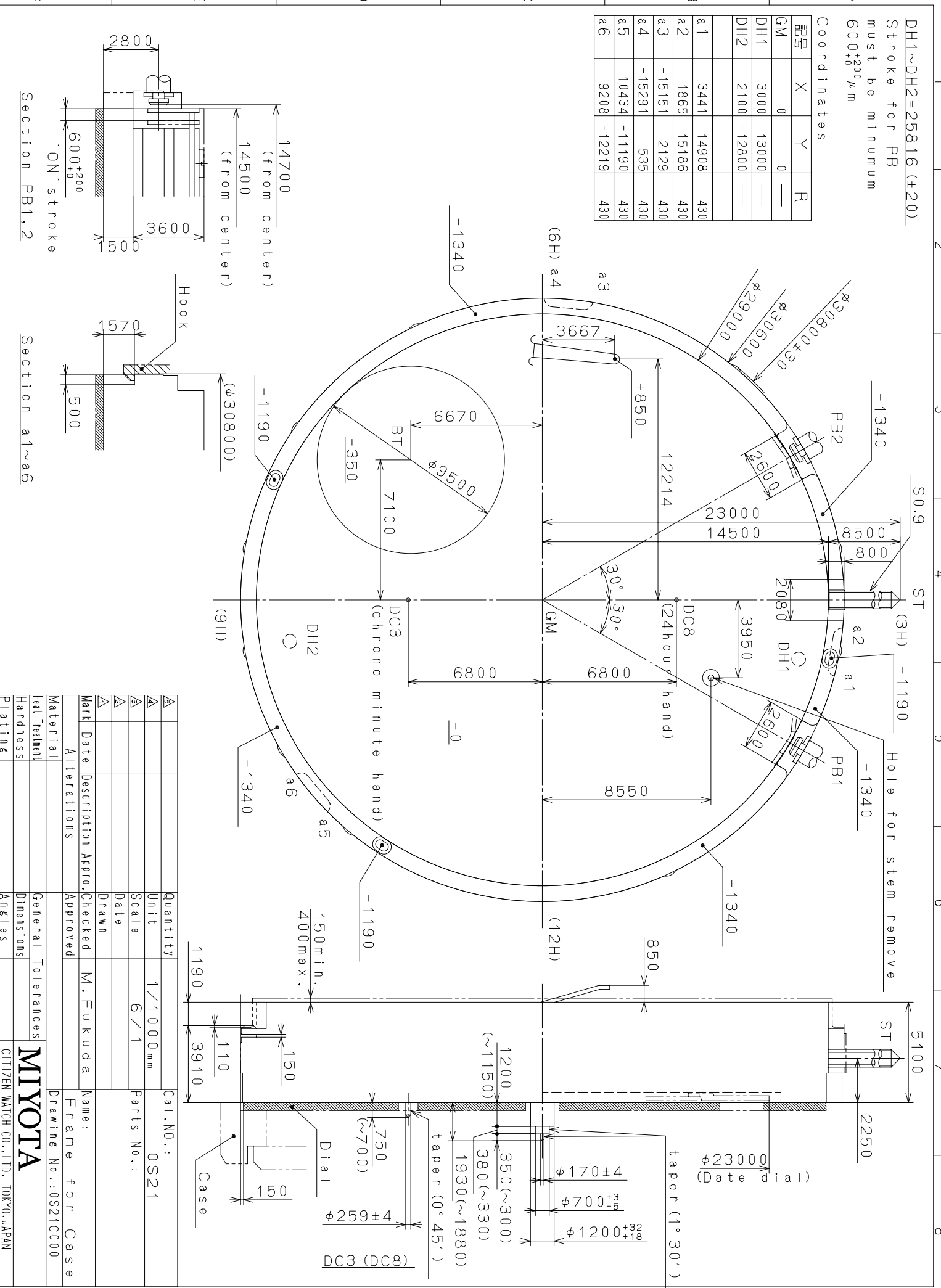


This drawing is provisional and subject to our reconfirmation and/or revision without notice.

Coordinates			
記号	X	Y	R
GM	0	0	—
DH1	3000	13000	—
DH2	2100	-12800	—
a1	3441	14908	430
a2	1865	15186	430
a3	-15151	2129	430
a4	-15291	535	430
a5	10434	-11190	430
a6	9208	-12219	430

DH1~DH2=25816 (±20)  
Stroke for PB must be minimum 600±200 μm

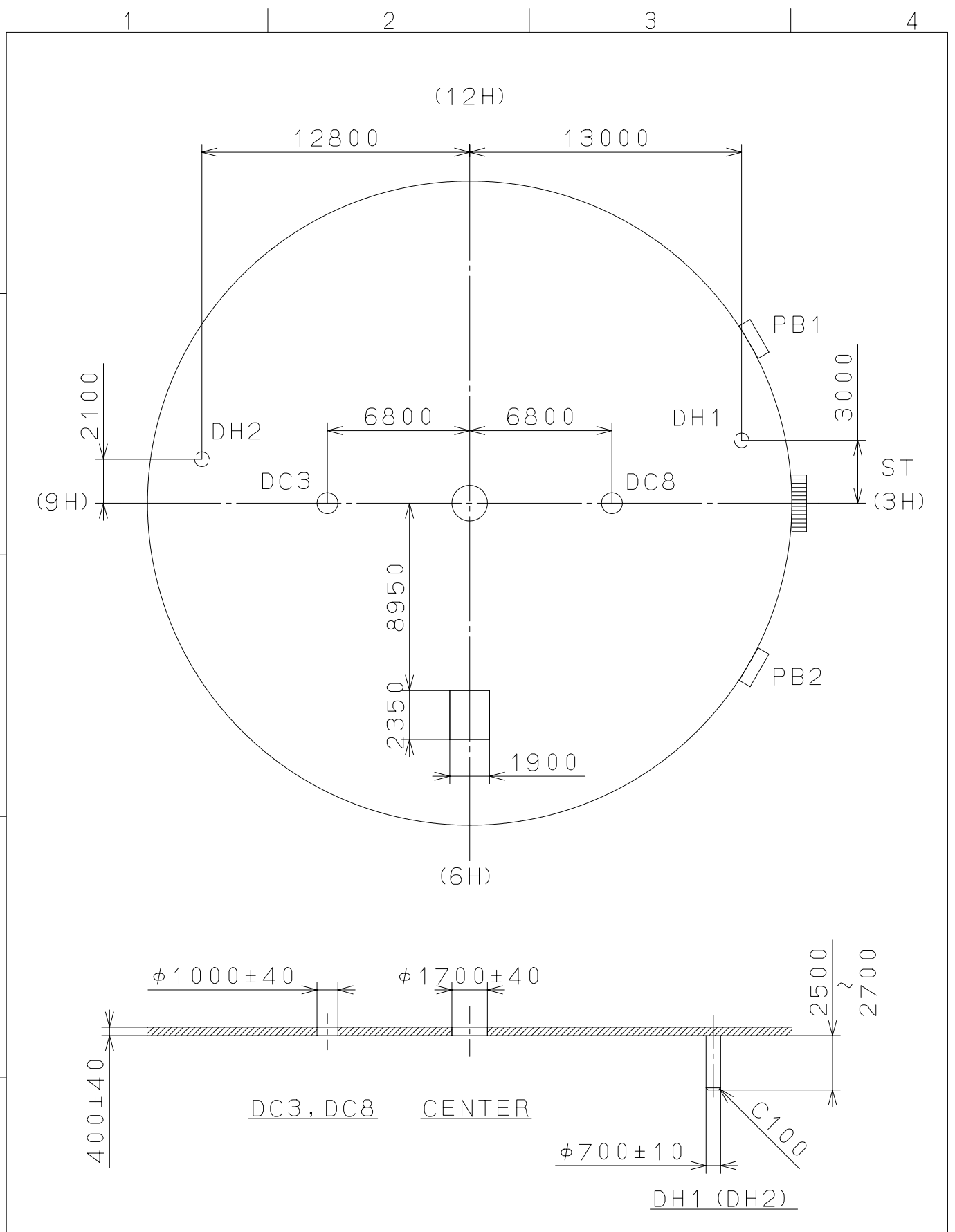


△	Quantity	1/1000 mm	Cal. NO.:	OS21
△	Unit	6/1	Parts No.:	
△	Scale	Drawn	Name:	Frame for Case
△	Date	Checked	M. Fukuda	Drawing No.: OS21C000
△	Mark	Description	Approved	
△	Alterations			
△	Material	General Tolerances		
△	Hardness	Dimensions		
△	Plating	Angles		

Material: CITIZEN WATCH CO., LTD. TOKYO, JAPAN

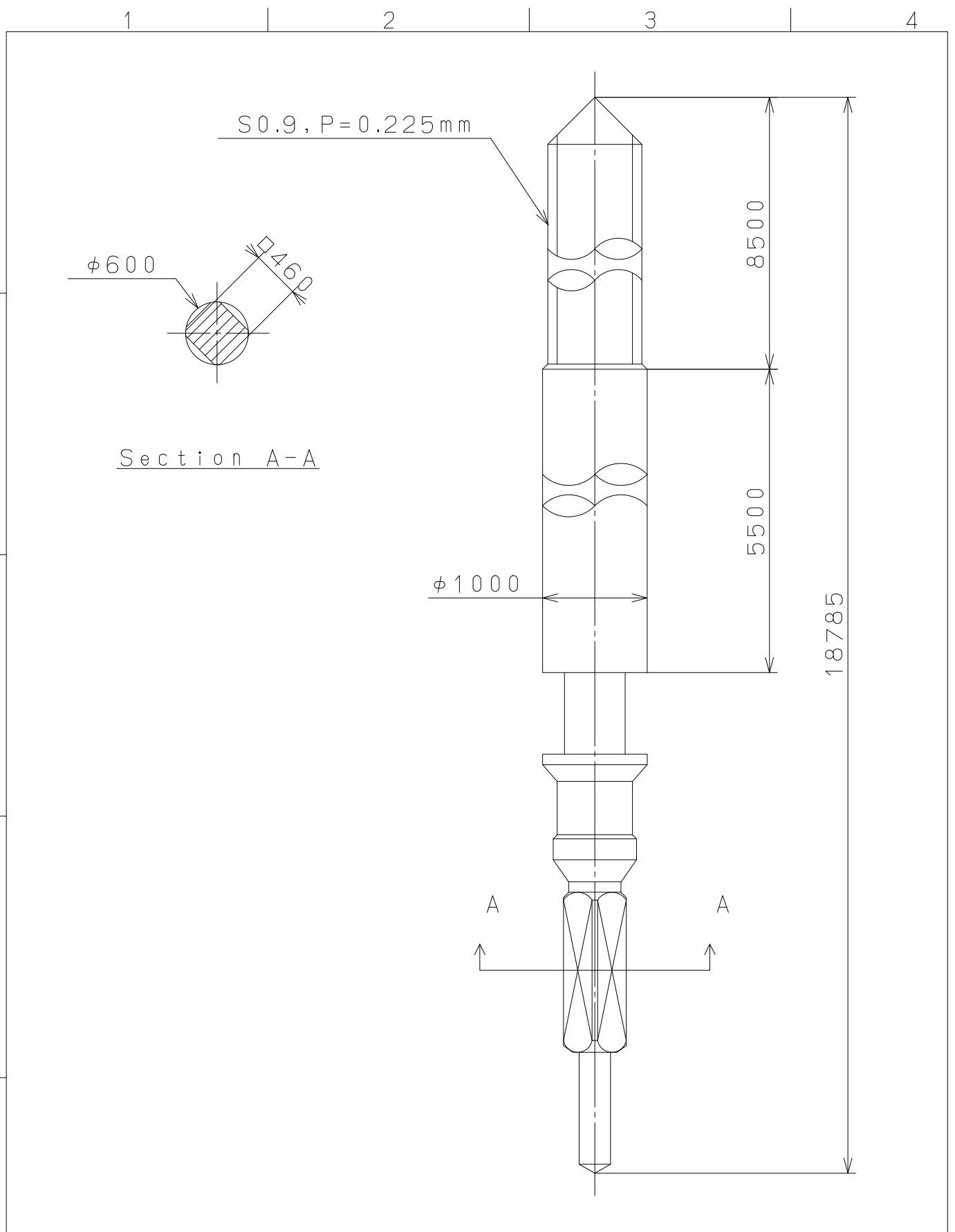
2005/10/12 (12:57:10)

This drawing is provisional and subject to our reconfirmation and/or revision without notice.



△5			Quantity		Cal. NO.:
△4			Unit	1 / 1000 mm	OS21-00Z
△3			Scale	4 / 1	Parts No.:
△2			Date		
△1			Drawn		
Mark	Date	Description	Appr.	Checked	Name:
		Alterations	Approved	M. Fukuda	Indications for Dial
Material					Drawing No.: OS21D010
Heat Treatment			General Tolerances	<b>MIYOTA</b>	
Hardness			Dimensions		
Plating			Angles		
				CITIZEN WATCH CO., LTD. TOKYO, JAPAN	

This drawing is provisional and subject to our reconfirmation and/or revision without notice.



△			Quantity		Cal.NO.:
△			Unit	1 / 1000 mm	
△			Scale	20 : 1	Parts No.:
△			Date		065-453
△			Drawn		
Mark	Date	Description	Appr.	Checked	E. Murakami
Alterations			Approved	Name:	
					SETTING STEM
Material					Drawing No.: 4530S000
Heat Treatment					<b>MIYOTA</b>
Hardness					
Plating					
					CITIZEN WATCH CO., LTD. TOKYO, JAPAN