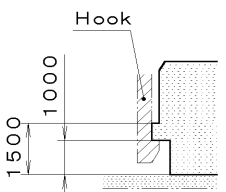
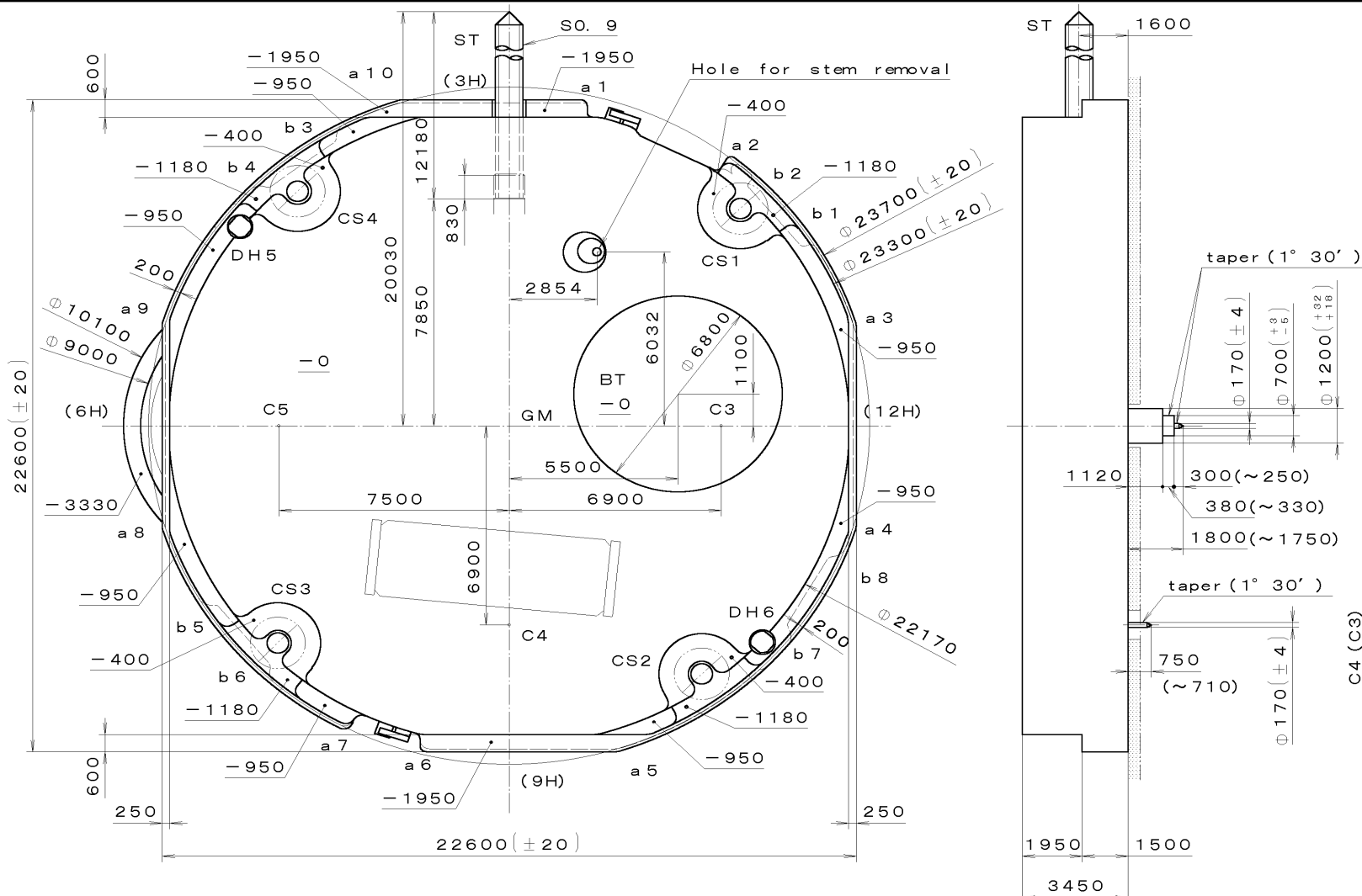


This drawing is provisional and subject to our reconfirmation and/or revision without notice.

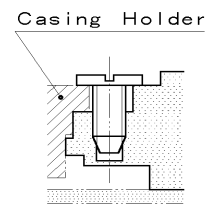
DH5~DH6= 22287 (±20)

Coordinates

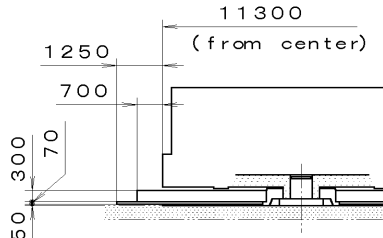
Mark	X	Y	R
GM	0	0	—
DH5	-8759	6900	—
DH6	8251	-7500	—
a 1	2351	11100	200
a 2	7235	9131	200
a 3	10800	3490	500
a 4	10800	-3490	500
a 5	3490	-10800	500
a 6	-2700	-11100	200
a 7	-5389	-10216	300
a 8	-10800	-3490	500
a 9	-10800	3490	500
a 10	-3490	10800	500
b 1	9581	6360	150
b 2	7928	8331	150
b 3	-5773	9946	150
b 4	-7839	8415	150
b 5	-9572	-6374	150
b 6	-7916	-8342	150
b 7	9196	-6906	150
b 8	10501	-4690	150



Section b1~b8



Section CS1~4

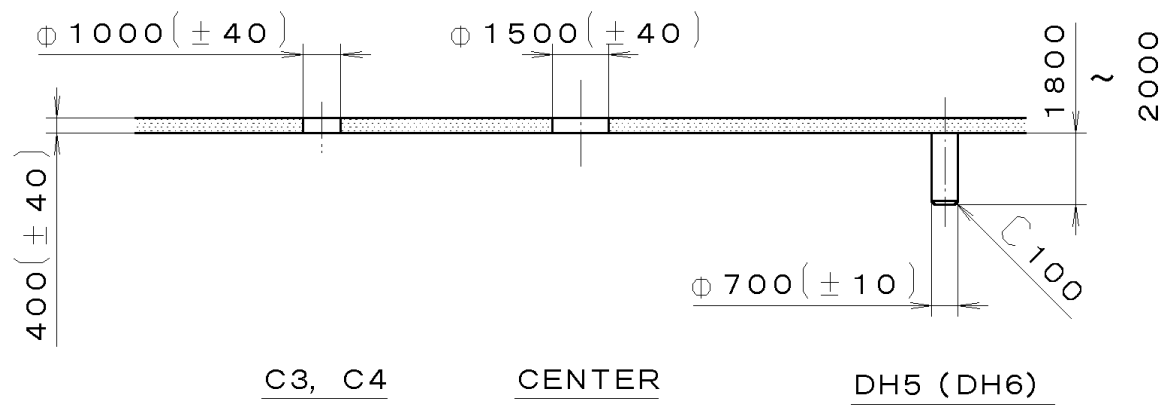
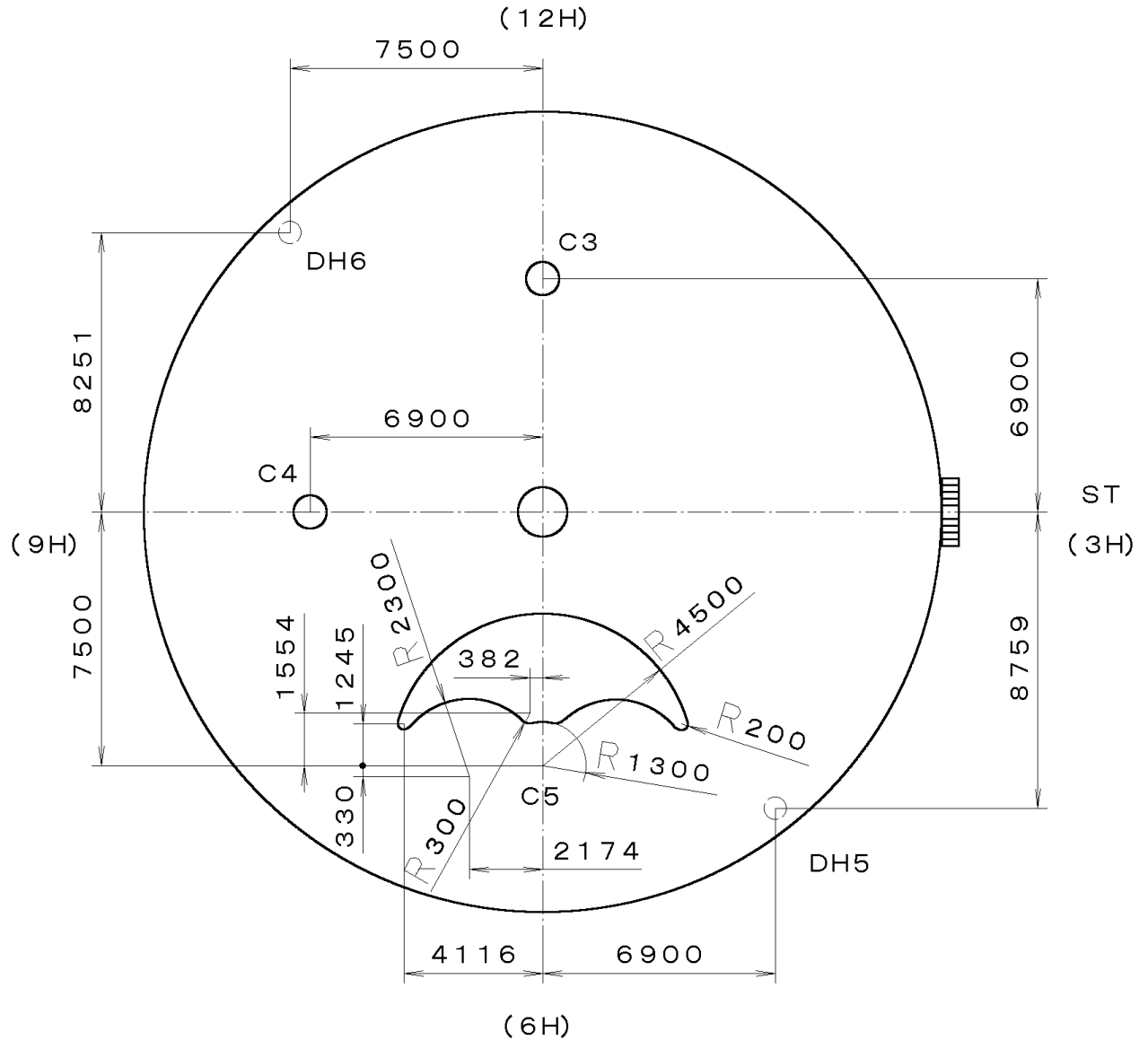


Section C5

△		Quantity		Cal. No. :	6P21
△		Unit	1/1000 mm	Parts:	
△		Scale	7:1	Name:	Frame for Case
△		Date		Approved	
△		Drawn		Checked	T. Hiruta
△		Material		Drawing No. :	6P21C000
△		Heat Treatment		General Tolerances	
△		Hardness		Dimensions	
△		Plating		Angles	

MIYOTA

This drawing is provisional and subject to our reconfirmation and/or revision without notice.



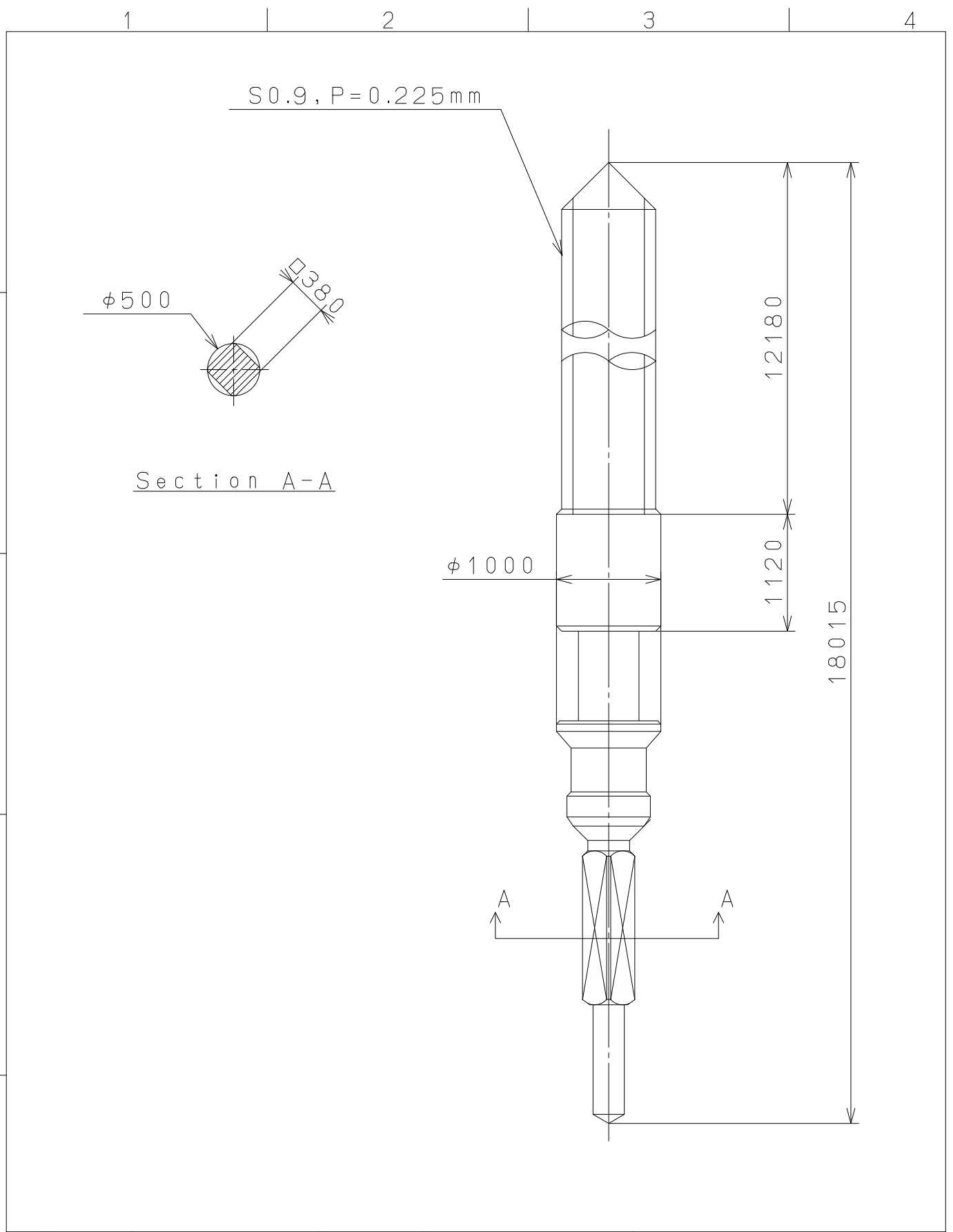
*** T I P W (01) *** (2100 1121) 01-02-09

7		Quantity		Cal. No. :	6P21-00A
6		Unit	1/1000 mm	Parts:	
5		Scale	5:1	Name:	Indications for Dial
4		Date		Drawing No. :	6P21D000
3		Drawn			
2		Checked	T. Hiruta		
1		Approved			
Material					
Heat Treatment		General Tolerances		MIYOTA	
Hardness		Dimensions			
Plating		Angles			

C3, C4
CENTER
DH5 (DH6)

2010/05/12 (17:15:34)

This drawing is provisional and subject to our reconfirmation and/or revision without notice.



△5			Quantity		Cal.NO.:
△4			Unit	1/1000mm	
△3			Scale	20:1	Parts No.:
△2			Date		065-379
△1			Drawn		
Mark	Date	Description	Appro.	Checked	T.Hiruta
Alterations			Approved	Name:	
			SETTING STEM		
Material					Drawing No.:3790S000
Heat Treatment					MIYOTA
Hardness					
Plating					
				CITIZEN WATCH CO.,LTD. TOKYO,JAPAN	