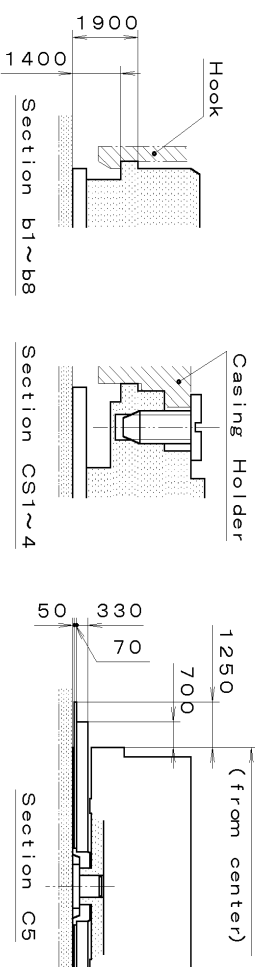
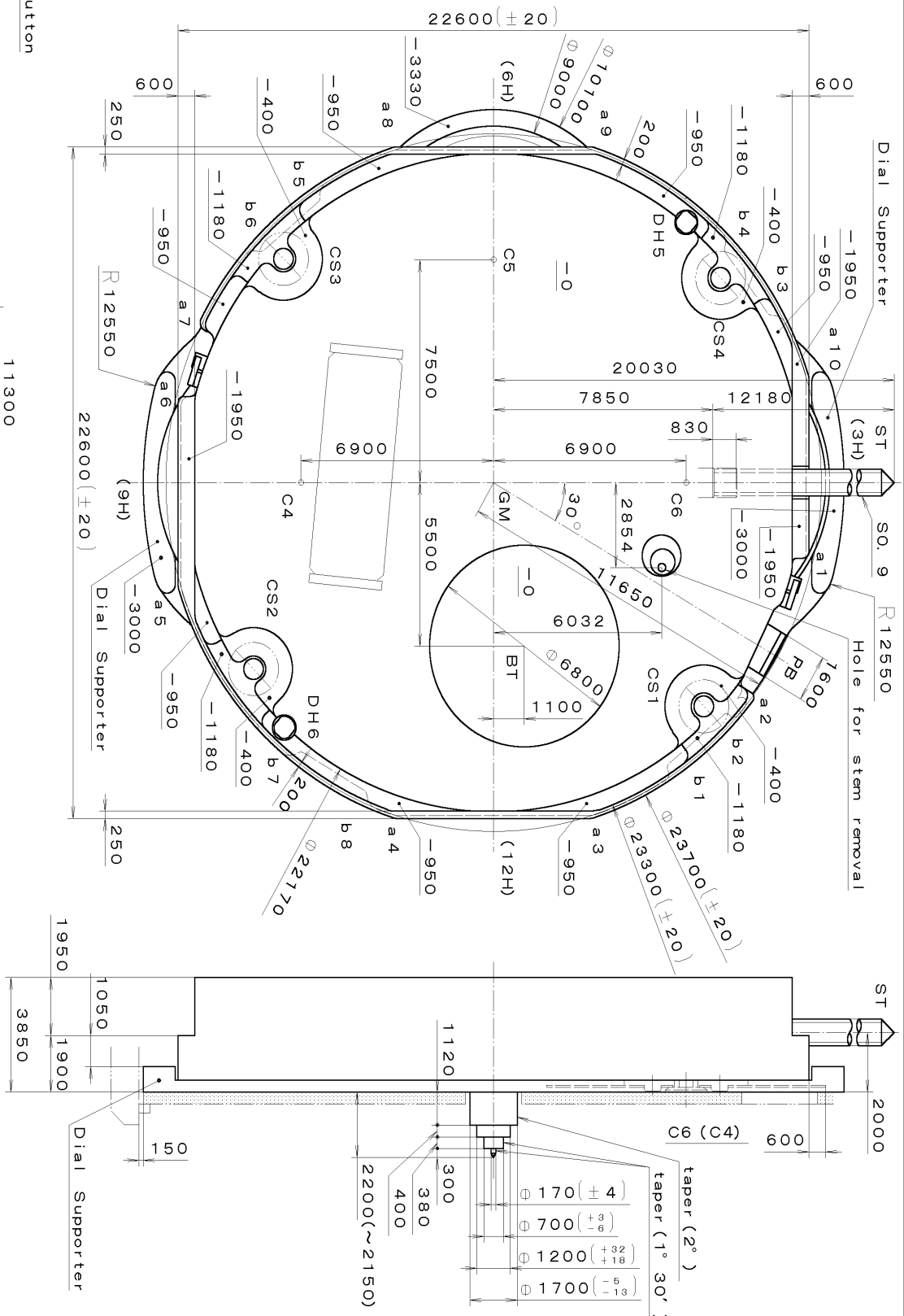


This drawing is provisional and subject to our reconfirmation and/or revision without notice.

\*\*\* TIPW 6P80 (01) \*\*\* (2100 1121 ) 01-02-07

DH5~DH6=22287 (±20)

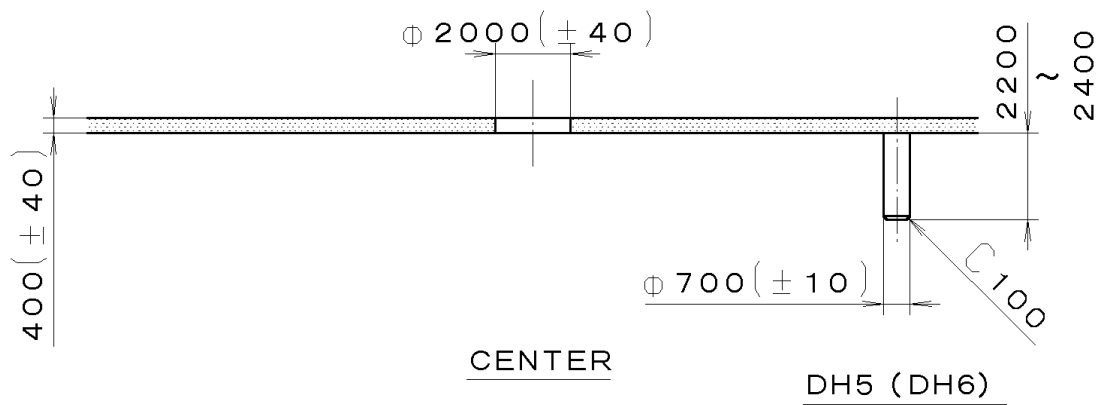
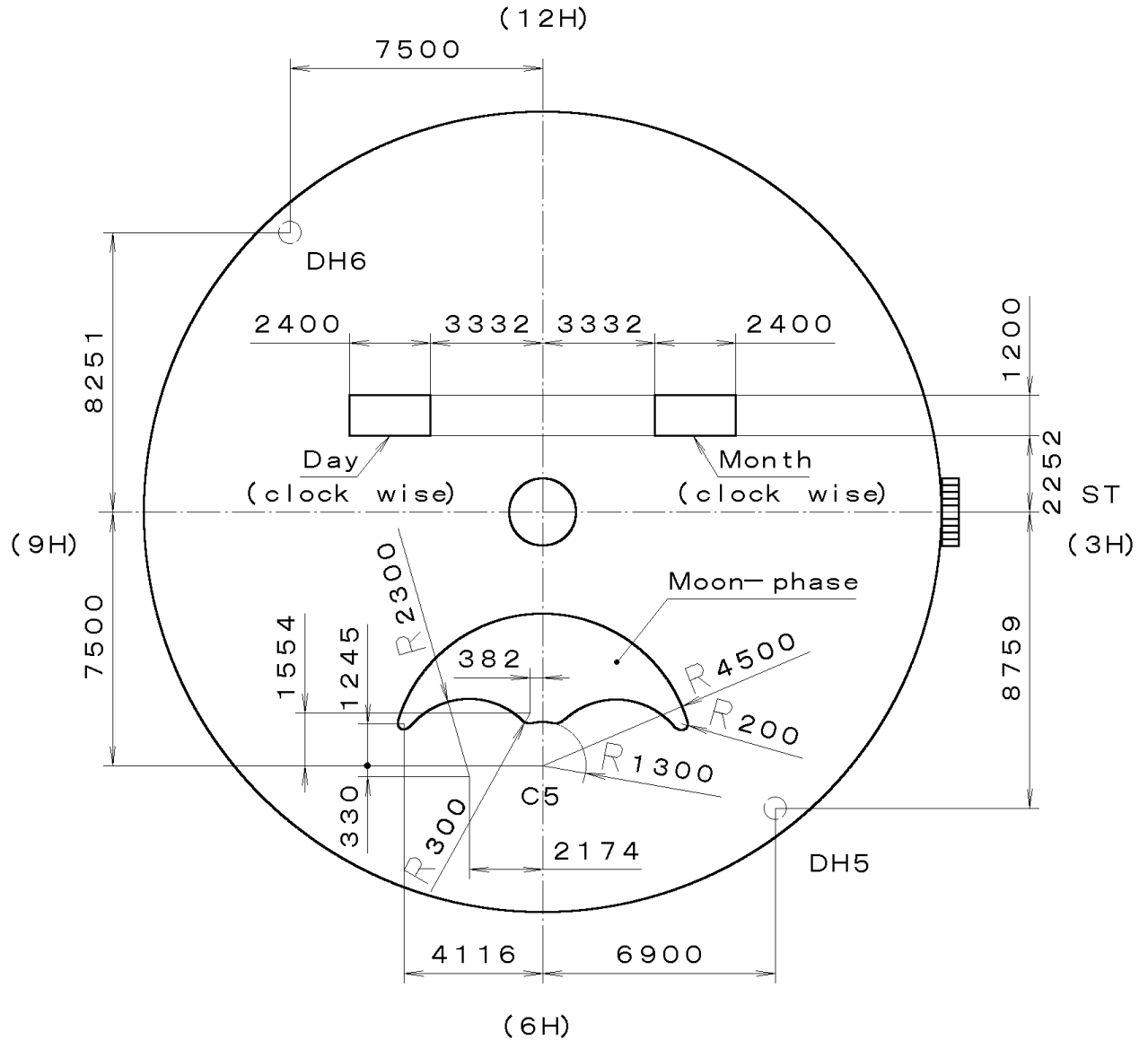
Coordinates			
Mark	X	Y	R
GM	0	0	—
DH5	-8759	6900	—
DH6	9251	-7500	—
a1	2351	11100	200
a2	7235	9131	200
a3	10800	3490	500
a4	10800	-3490	500
a5	3490	-10800	500
a6	-2700	-11100	200
a7	-5389	-10216	300
a8	-10800	-3490	500
a9	-10800	3490	500
a10	-3490	10800	500
b1	9581	6360	150
b2	7928	8331	150
b3	-5773	9946	150
b4	-7839	8415	150
b5	-9572	-6374	150
b6	-7916	-8342	150
b7	9196	-6906	150
b8	10501	-4890	150



Quantity	Unit	Cal. No. :
1	1/1000 mm	6P80
Parts:		
Scale	7:1	
Date		
Drawn		
Checked	T. Hiruta	
Approved		
Name: Frame for Case		
Drawing No.: 6P80C000		
Material		
Heat Treatment		
Hardness		
Plating		
General Tolerances		
Dimensions		
Angles		

**MIYOTA**

This drawing is provisional and subject to our reconfirmation and/or revision without notice.

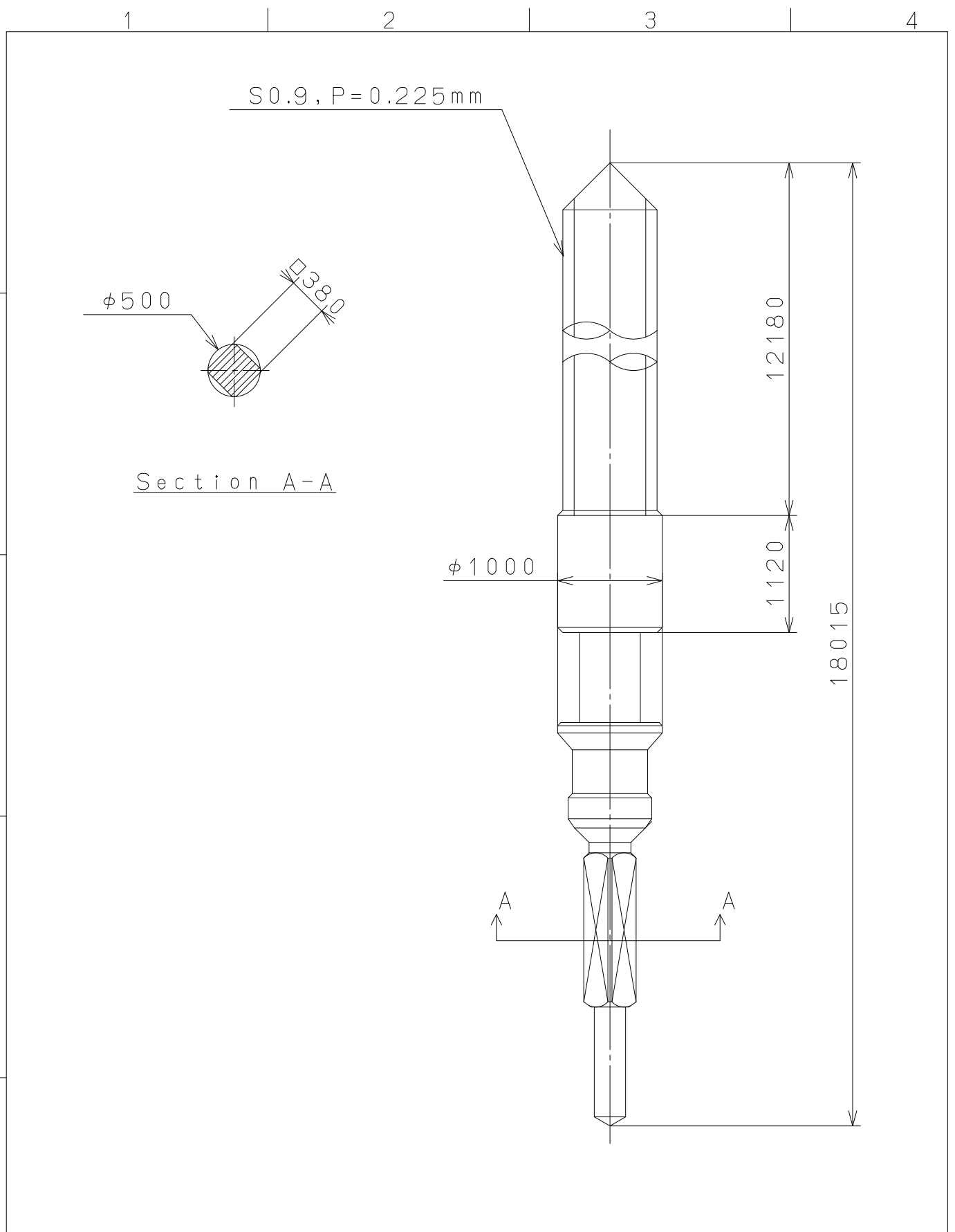


\*\*\* T I P W (01) \*\*\* (2100 1121) 01-02-09

7		Quantity		Cal. No. : <b>6P80-00A</b>
6		Unit	1/1000 mm	
5		Scale	5:1	Parts:
4		Date		
3		Drawn		
2		Checked	T. Hiruta	Name:
1		Approved		Indications for Dial
<b>Material</b>				Drawing No. : 6P80D000
Heat Treatment		General Tolerances		<b>MIYOTA</b>
Hardness		Dimensions		
Plating		Angles		

2010/05/12 (17:15:34)

This drawing is provisional and subject to our reconfirmation and/or revision without notice.



△5			Quantity		Cal.NO.:
△4			Unit	1/1000mm	
△3			Scale	20:1	Parts No.:
△2			Date		065-379
△1			Drawn		
Mark	Date	Description	Appro.	Checked	T.Hiruta
Alterations			Approved	Name:	
			SETTING STEM		
Material					Drawing No.:3790S000
Heat Treatment					<b>MIYOTA</b> CITIZEN WATCH CO.,LTD. TOKYO,JAPAN
Hardness					
Plating					