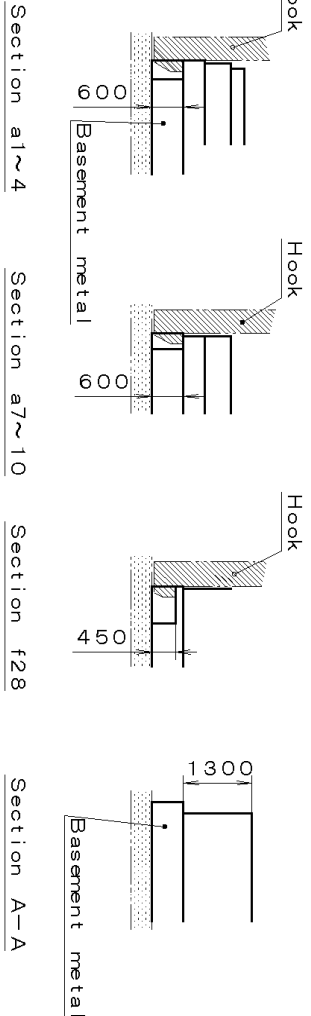
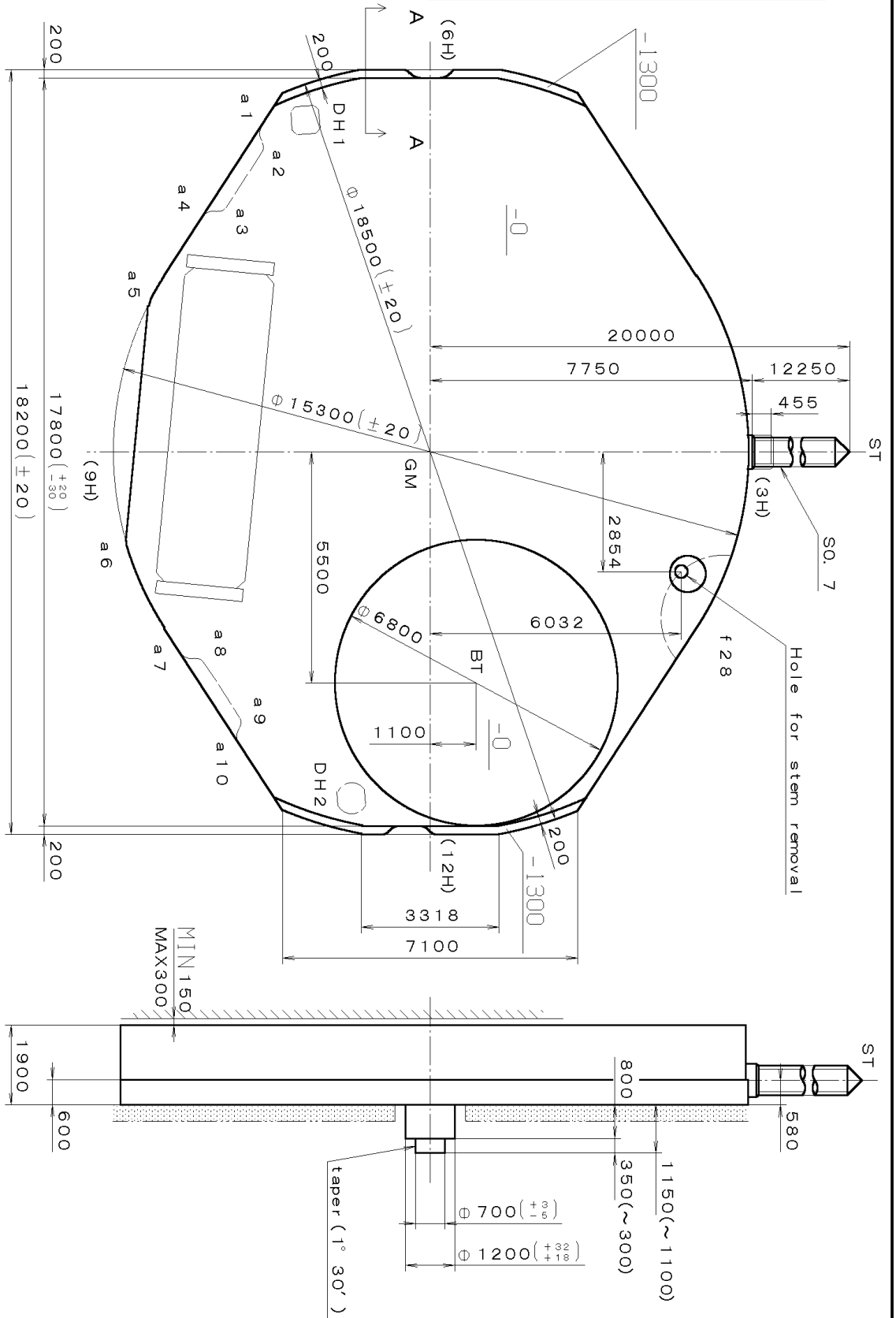


DH1~DH2=16171 (±20)

Coordinates

Mark	X	Y	R
GM	0	0	—
f28	3957	7049	1500
DH1	-7900	-3000	—
DH2	9234	-1900	—
a1	-7569	-3928	300
a2	-7252	-4215	200
a3	-6914	-5092	200
a4	-5433	-5228	300
a5	-3437	-6393	400
a6	2156	-6922	400
a7	4625	-6757	300
a8	5106	-6621	200
a9	6444	-4745	200
a10	6761	-4358	300



Material	Quantity	Unit	Scale	Date	Checked	Approved	Name:
Heat Treatment	1/1000 mm	10:1			T. Hiruta		T. Hiruta
Hardness							
Plating							
General Tolerances							
Dimensions							
Angles							
Drawing No. : 9T22C000							Frame for Case

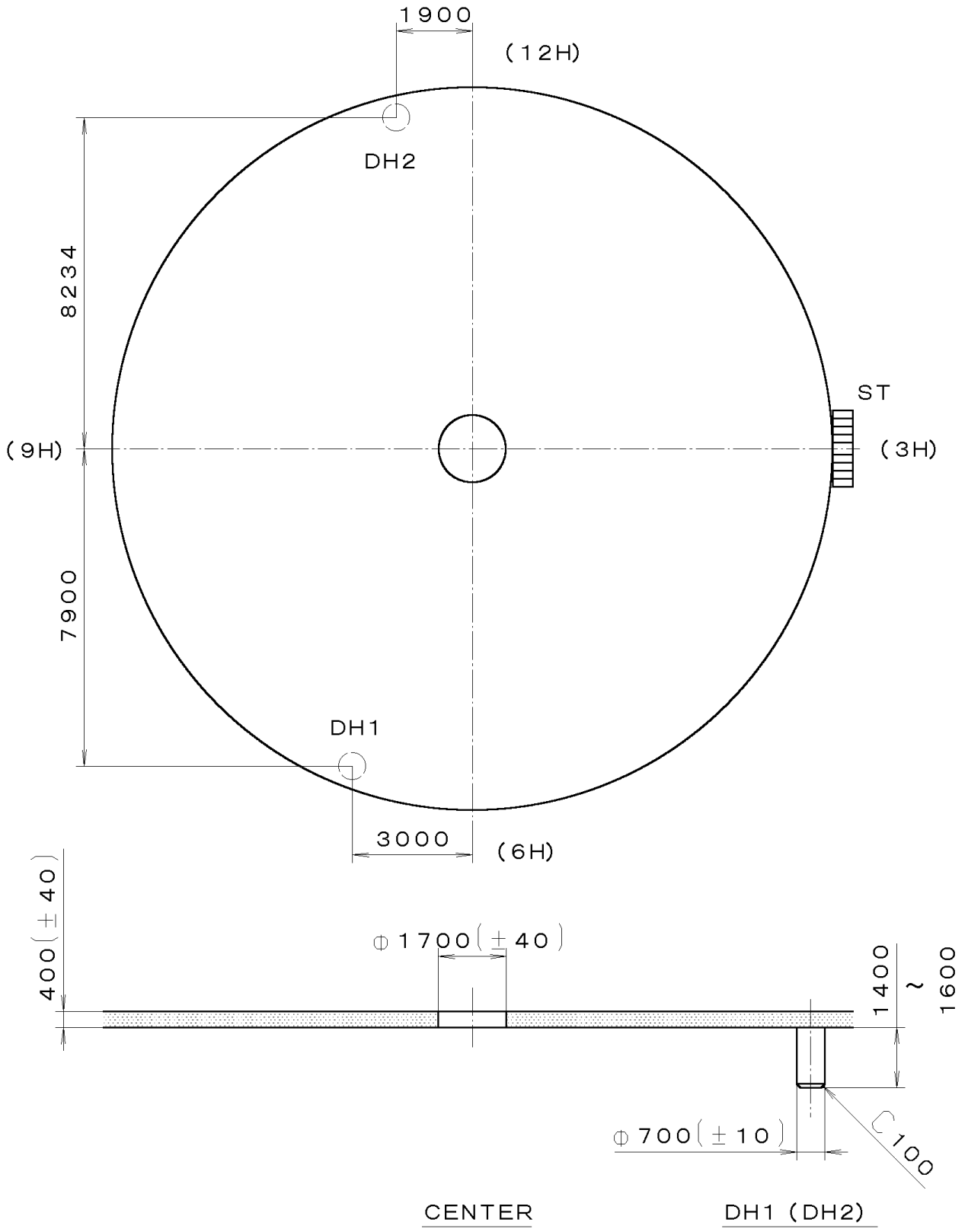
Call. No. : 9T22

Parts:

MIYOTA

This drawing is provisional and subject to our reconfirmation and/or revision without notice.

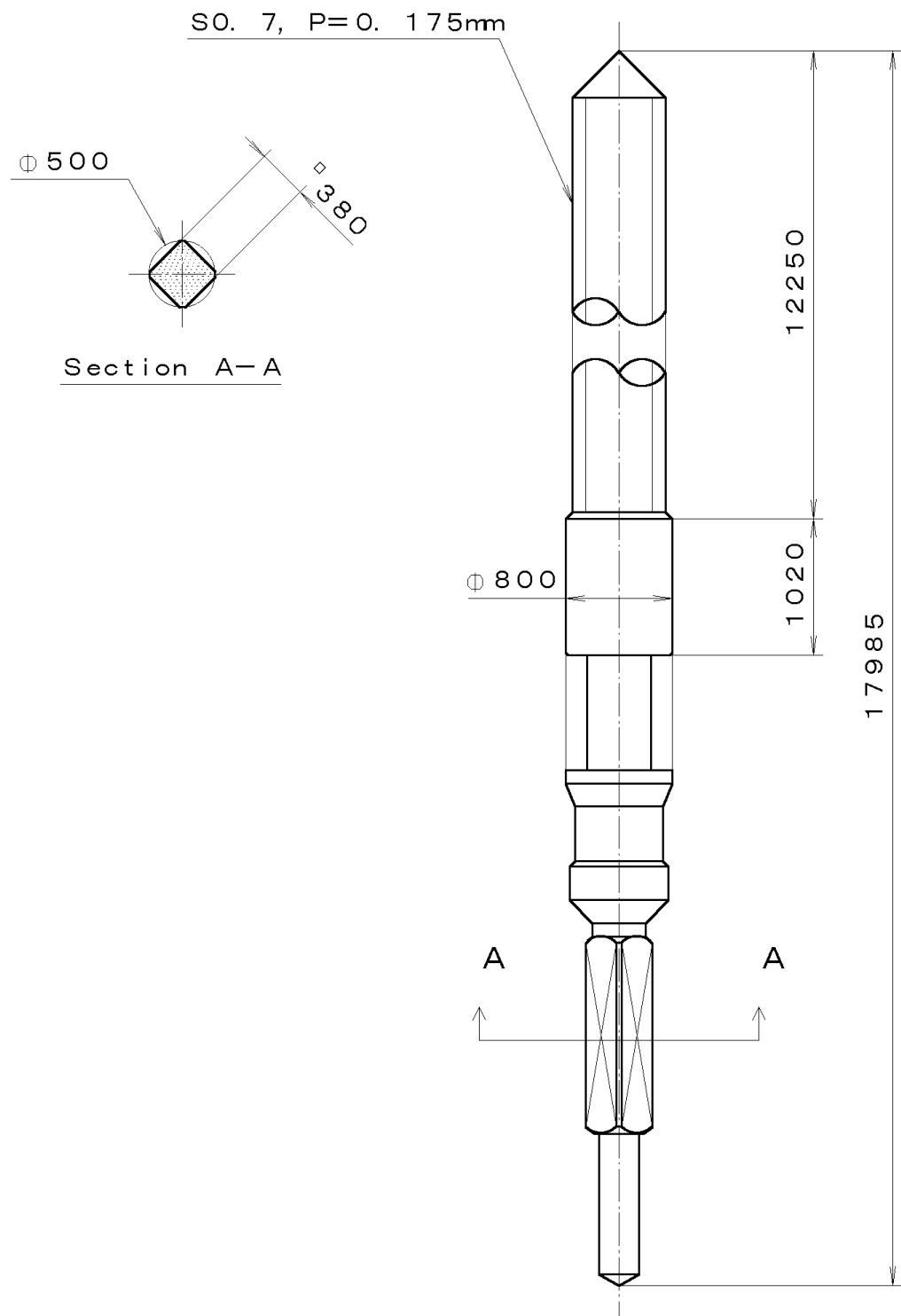
9T33-00A (01) \*\*\* (2100 1121) 00-06-22



7		Quantity		Cal. No. <b>9T22-10A</b>
6		Unit	1/1000 mm	
5		Scale	7:1	Parts:
4		Date		
3		Drawn		
2		Checked	T. Hiruta	Name:
1		Approved		Indications for Dial
Material				Drawing No. : 9T33D000
Heat Treatment		General Tolerances		<b>MIYOTA</b>
Hardness		Dimensions		
Plating		Angles		

This drawing is provisional and subject to our reconfirmation and/or revision without notice.

\*\*\* T I P W (01) \*\*\* (2100 1121 A-01 A-01 ) 00-06-22  
 065-495



7		Quantity		Ca l. No. :
6		Unit	1/1000 mm	
5		Scale	20:1	Parts:
4		Date		065-495
3		Drawn		
2		Checked	T. Hiruta	Name:
1		Approved		SETTING STEM
Material		SuS420F-DG		Drawing No. : 4950S000
Heat Treatment		焼入焼戻		<b>MIYOTA</b>
Hardness		HV550		
Plating				
		General Tolerances		
		Dimensions		
		Angles		