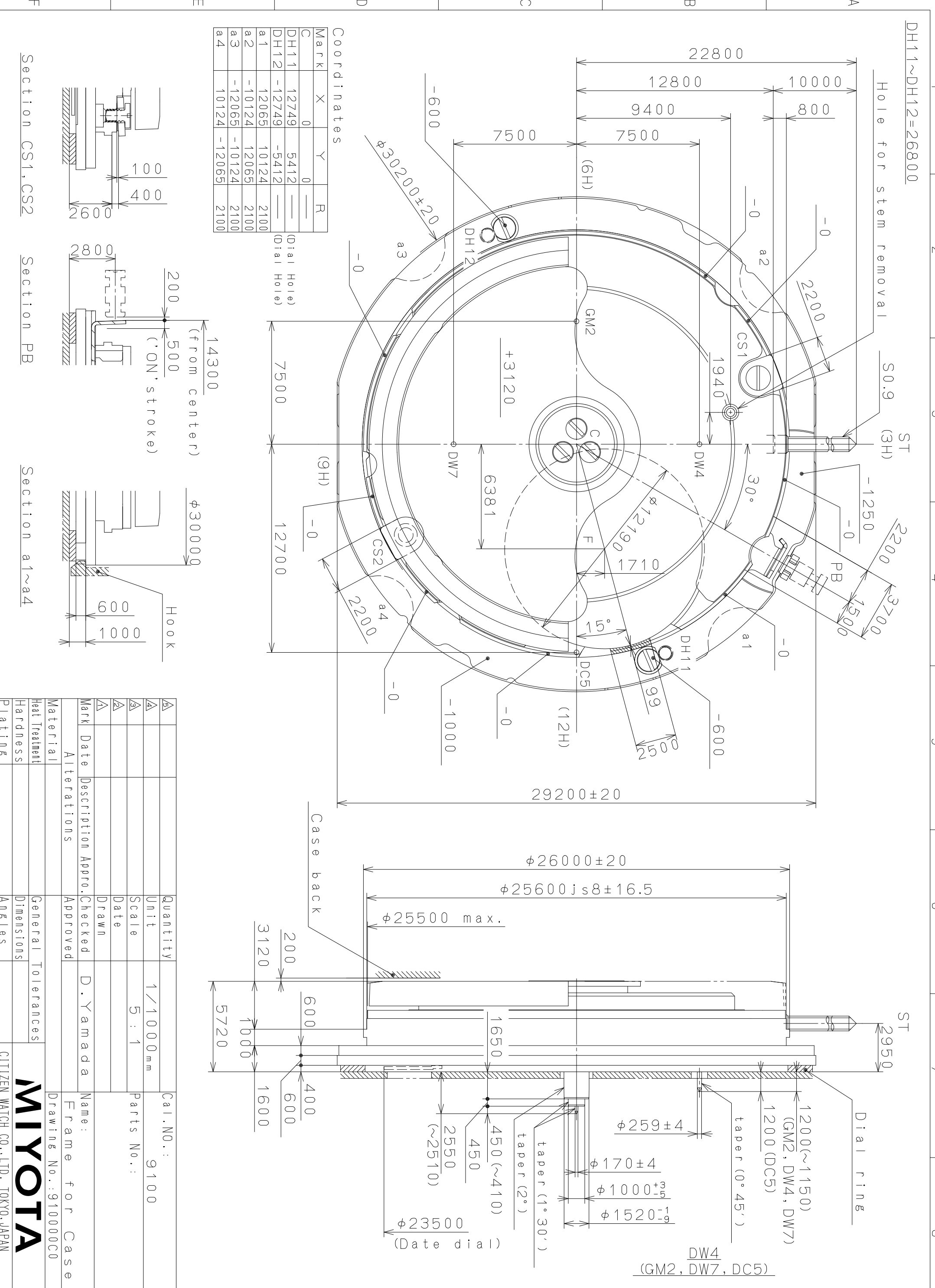


This drawing is provisional and subject to our reconfirmation and/or revision without notice.

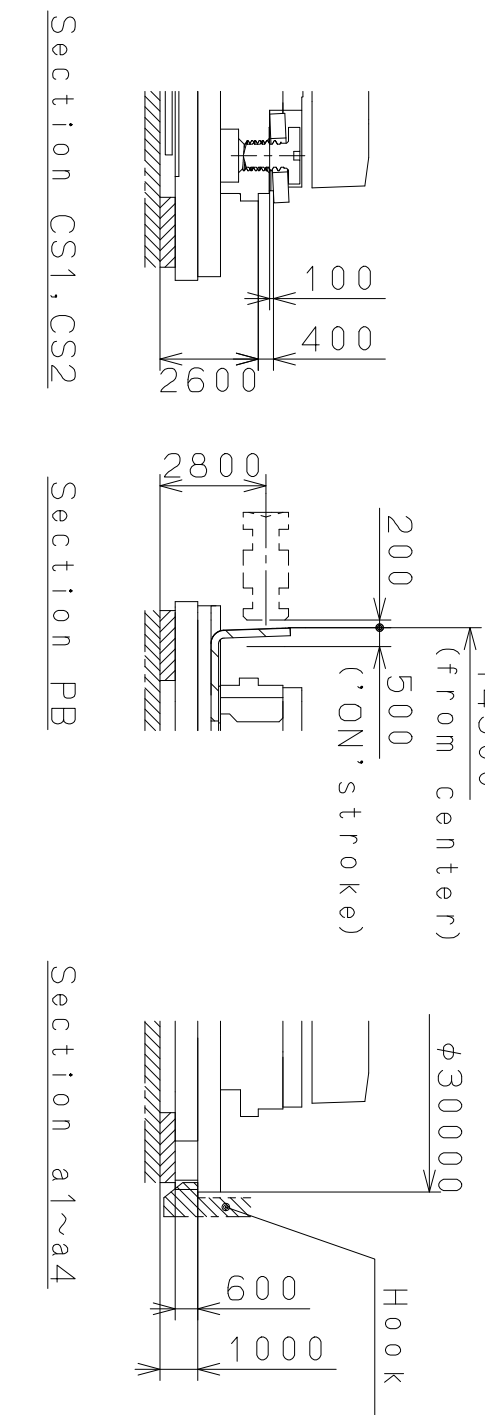


Coordinates

Mark	X	Y	R
C	0	0	—
DH11	122749	5412	—
DH12	-122749	-5412	—
a1	12065	10124	2100
a2	-10124	12065	2100
a3	-12065	-10124	2100
a4	10124	-12065	2100

(Dial Hole)
(Dial Hole)

Mark	X	Y	R
C	0	0	—
DH11	122749	5412	—
DH12	-122749	-5412	—
a1	12065	10124	2100
a2	-10124	12065	2100
a3	-12065	-10124	2100
a4	10124	-12065	2100



Alterations	Description	Appr.	Checked	Drawn	Approved
Material					
Heat Treatment					
Hardness					
Plating					

Quantity	Unit	Scale	Date	Drawn	Checked	Approved
1	1/1000 mm	5 : 1				D. Yamada

Material: **MIYOTA**

Heat Treatment: **MIYOTA**

Hardness: **MIYOTA**

Plating: **MIYOTA**

General Tolerances: **MIYOTA**

Dimensions: **MIYOTA**

Angles: **MIYOTA**

Alterations: **MIYOTA**

Description: **MIYOTA**

Appr.: **MIYOTA**

Checked: **MIYOTA**

Drawn: **MIYOTA**

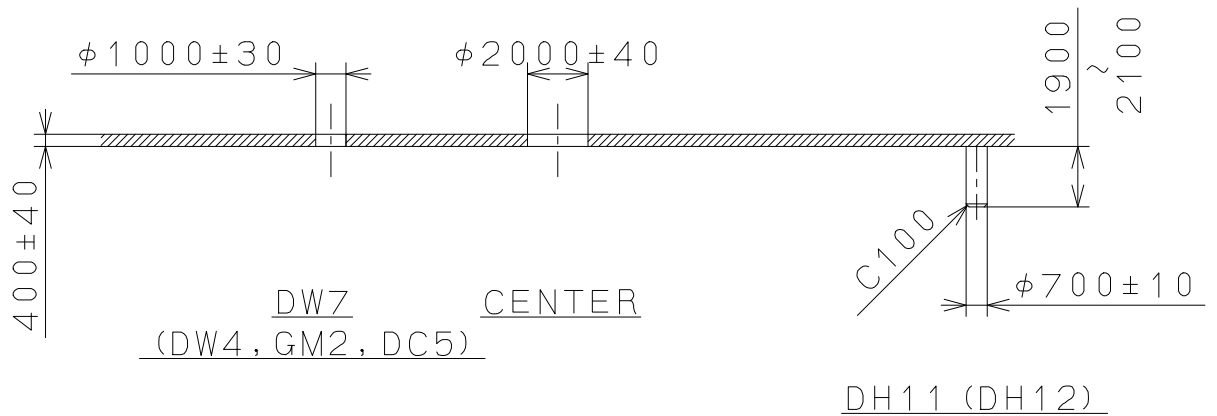
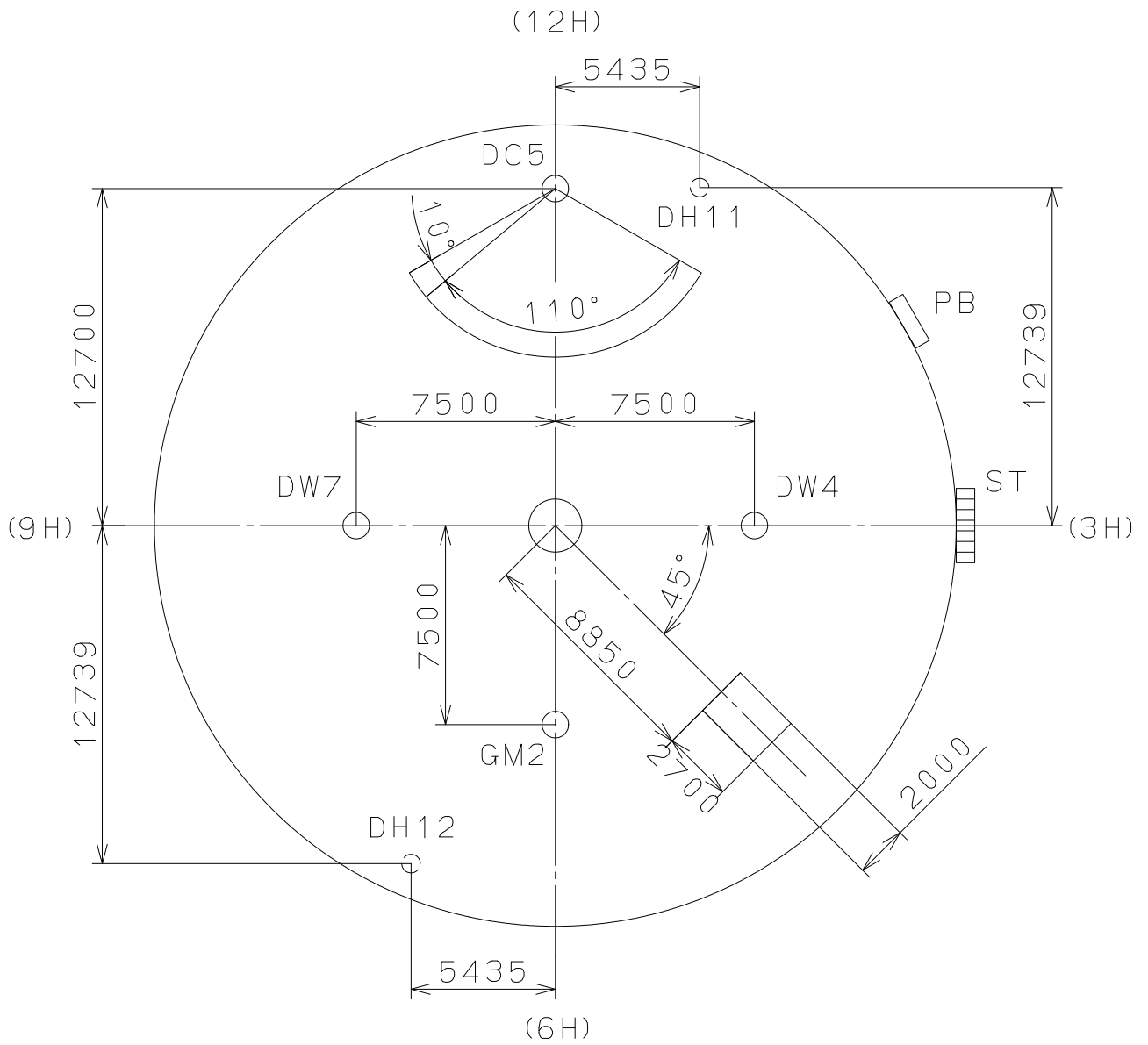
Approved: **MIYOTA**

Name: **MIYOTA**

Frame for Case: **MIYOTA**

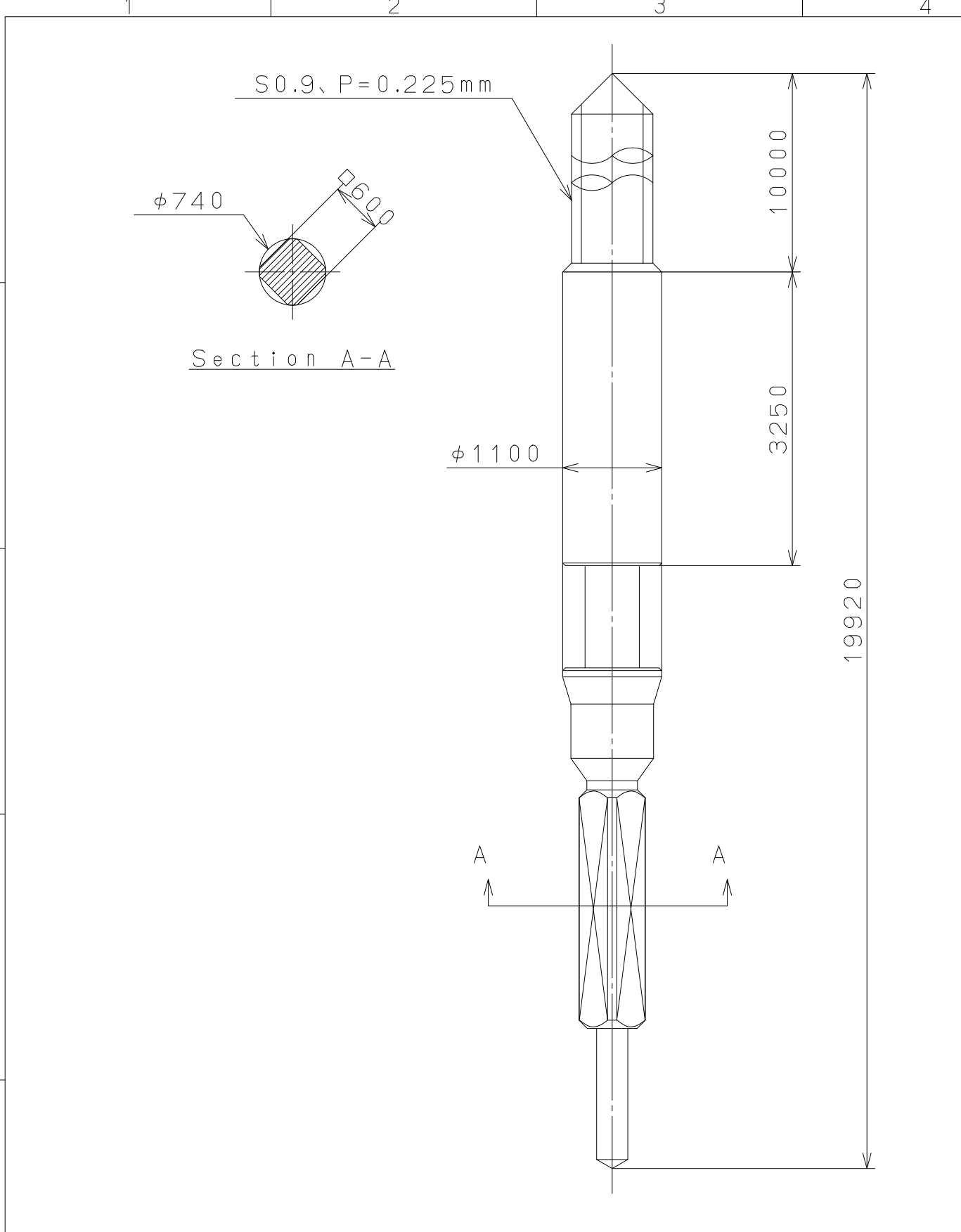
Drawing No.: 910000C0

This drawing is provisional and subject to our reconfirmation and/or revision without notice.



△			Quantity		Cal.NO.:
△			Unit	1 / 1000 mm	9100-20A
△			Scale	4 : 1	Parts No.:
△			Date		
△			Drawn		
Mark	Date	Description	Appr.	Checked	Name:
		Alterations	Approved	D. Yamada	Indications for Dial
Material					Drawing No.: 910000D0
Heat Treatment			General Tolerances	<div style="text-align: center; font-weight: bold; font-size: 2em;">MIYOTA</div> CITIZEN WATCH CO., LTD. TOKYO, JAPAN	
Hardness			Dimensions		
Plating			Angles		

This drawing is provisional and subject to our reconfirmation and/or revision without notice.



△5			Quantity		Cal.NO.:	
△4			Unit	1 / 1000 mm		
△3			Scale	17 : 1	Parts No.:	
△2			Date		065-A05	
△1			Drawn			
Mark	Date	Description	Appr.	Checked	D. Yamada	Name:
Alterations			Approved	SETTING STEM		
Material					Drawing No.:	A05000S0
Heat Treatment					MIYOTA CITIZEN WATCH CO., LTD. TOKYO, JAPAN	
Hardness						
Plating						