

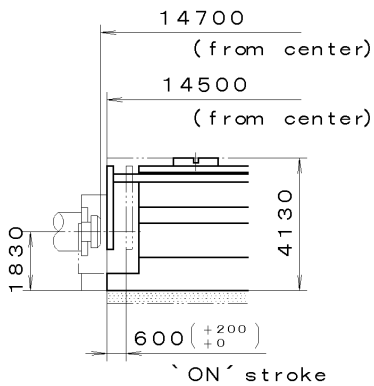
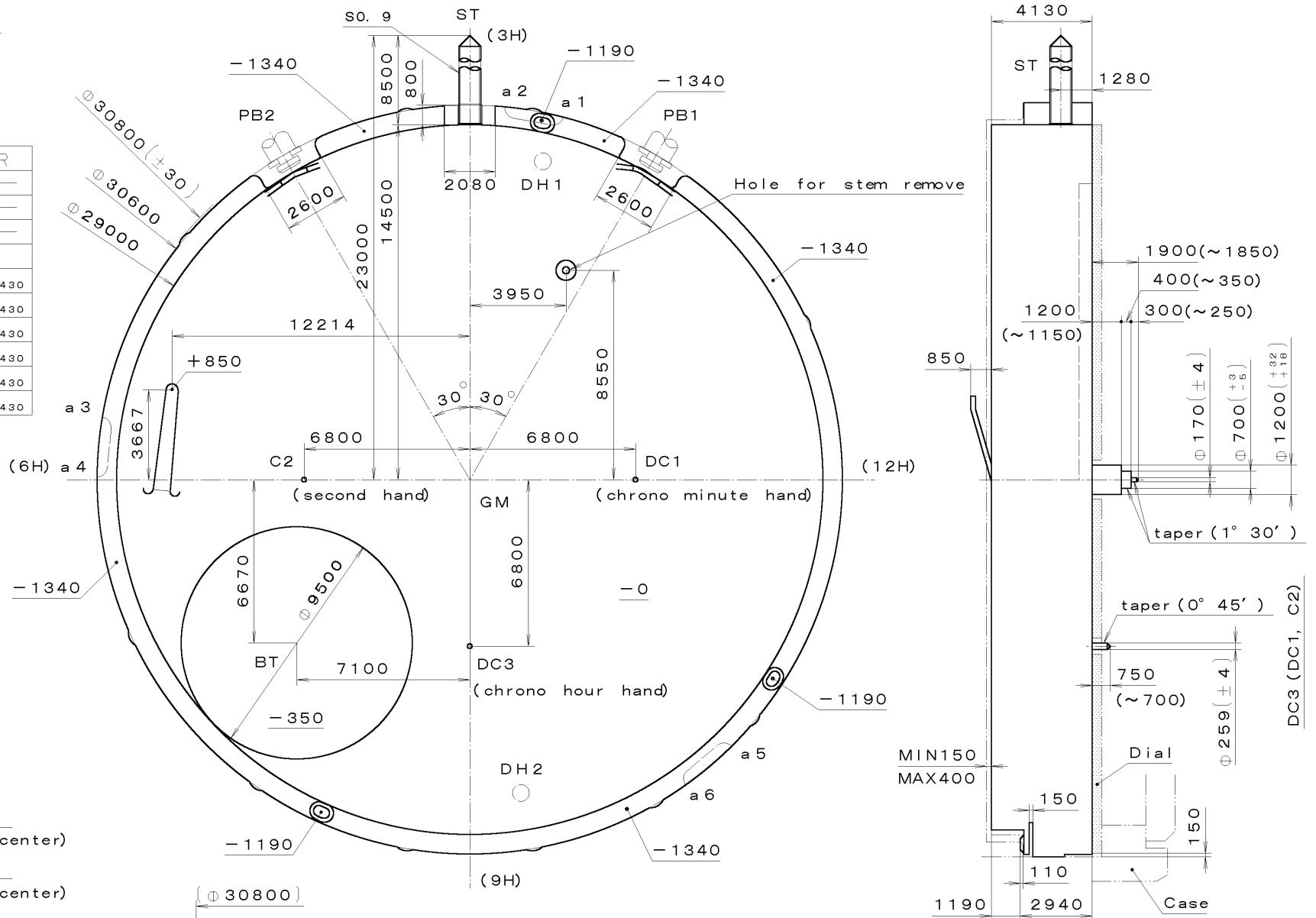
This drawing is provisional and subject to our reconfirmation and/or revision without notice.

DH1~DH2= 25816 (±20)

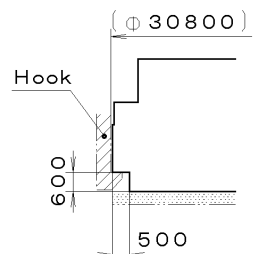
Stroke for PB
must be minimum
600 $[+200 / +0]$ μm

Coordinates

Mark	X	Y	R
GM	0	0	—
DH1	3000	13000	—
DH2	2100	-12800	—
a 1	3441	14908	430
a 2	1865	15186	430
a 3	-15151	2129	430
a 4	-15291	535	430
a 5	10434	-11190	430
a 6	9208	-12219	430



Section PB1, 2

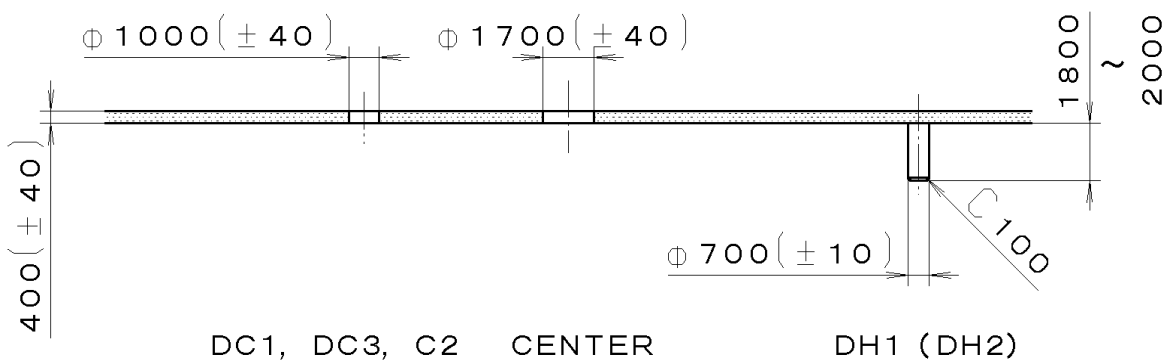
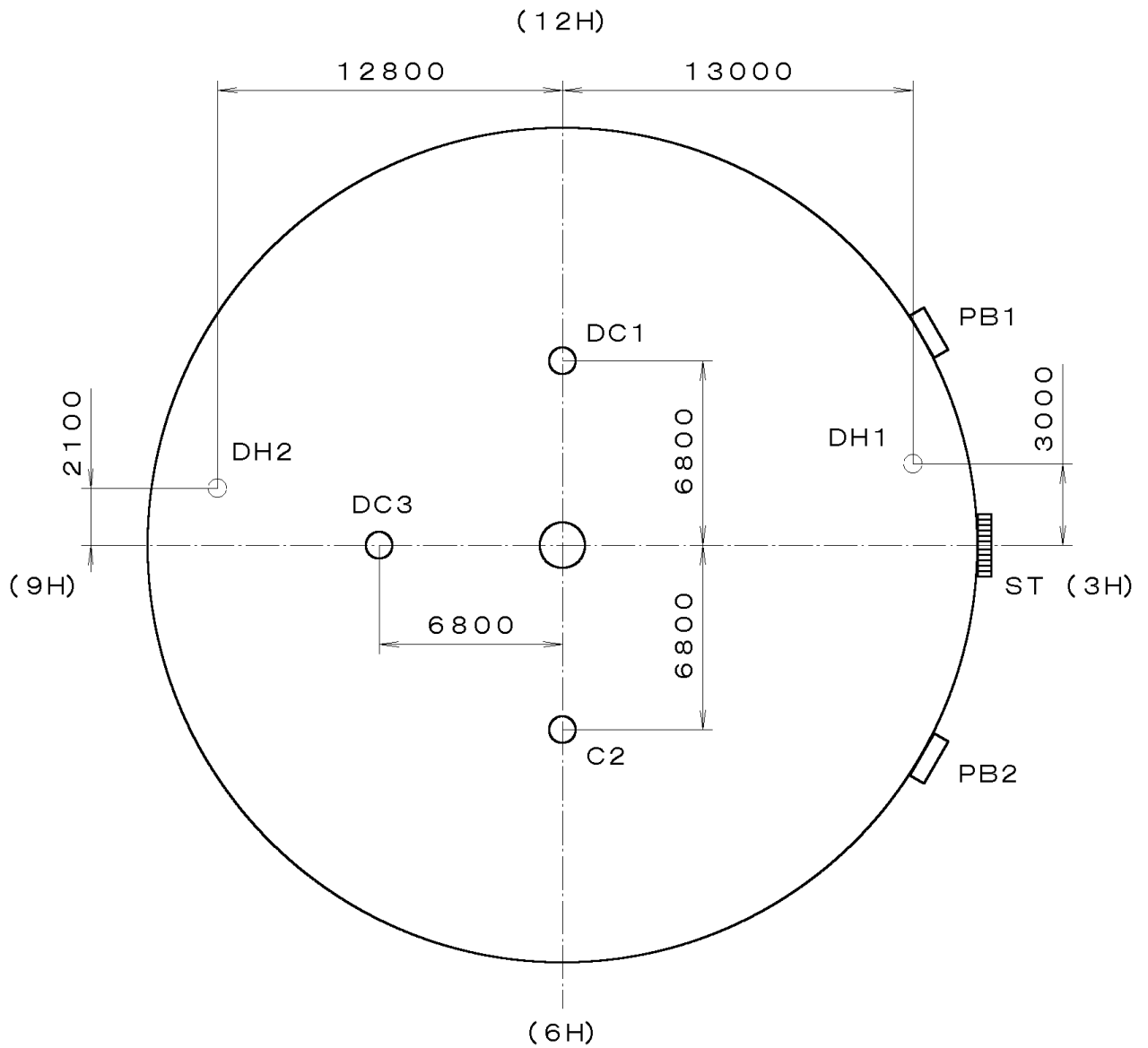


Section a1~a6

Quantity		Cal. No. : OS30
Unit	1/1000 mm	Parts:
Scale	6:1	Name:
Date		Frame for Case
Drawn		Drawing No. : OS30C000
Checked	T. Hiruta	
Approved		
Material		
Heat Treatment		
Hardness		
Plating		
General Tolerances		
Dimensions		
Angles		

MIYOTA

This drawing is provisional and subject to our reconfirmation and/or revision without notice.

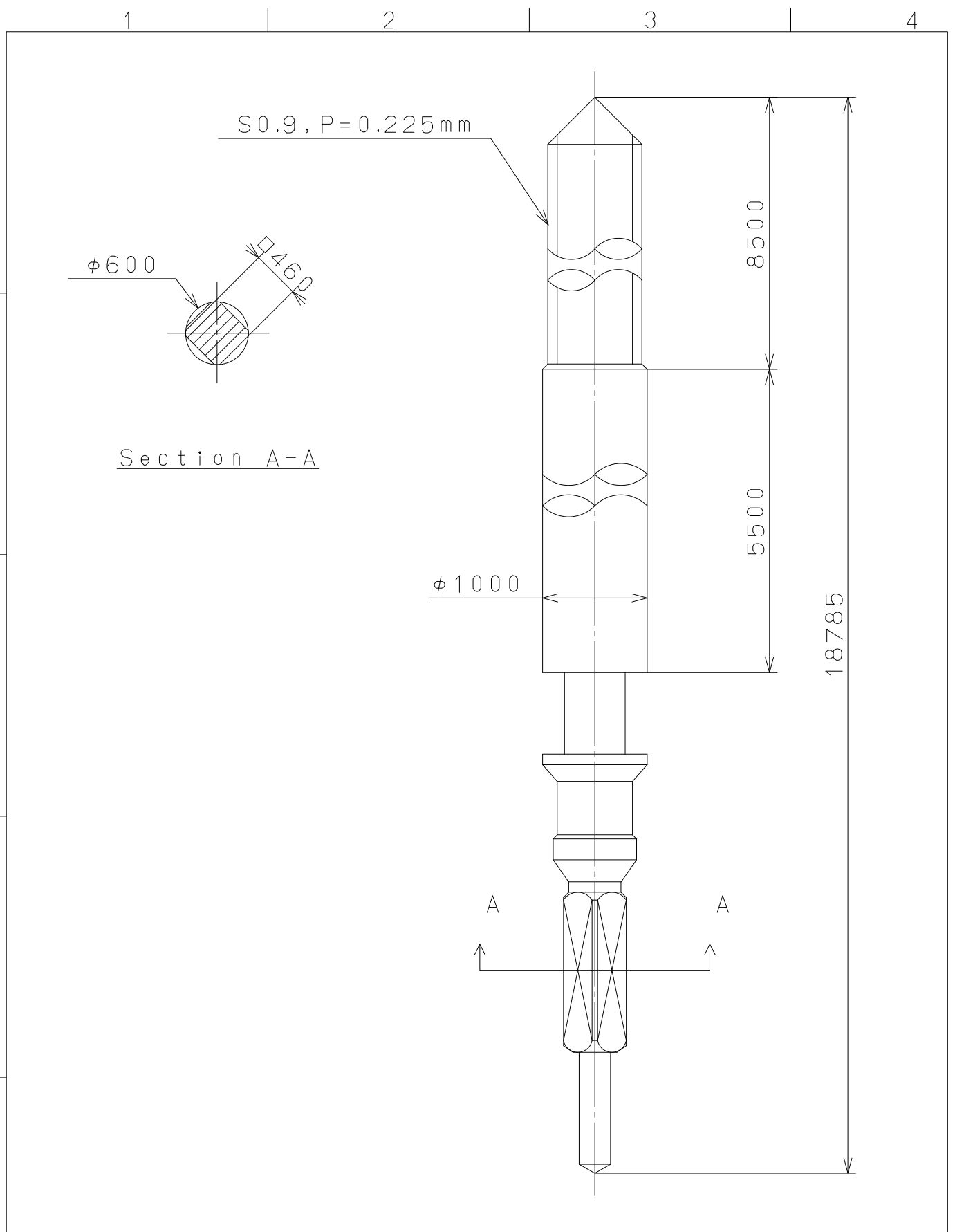


DC1, DC3, C2 CENTER

DH1 (DH2)

OS30-00A (01) *** (2100 1121) 00-07-03 *** T I P W	7		Quantity		Cal. No. : OS30-00A
	6		Unit	1/1000 mm	
	5		Scale	4:1	Parts:
	4		Date		
	3		Drawn		
	2		Checked	T. Hiruta	Name:
	1		Approved		Indications for Dial
Material					Drawing No. : OS30D000
Heat Treatment			General Tolerances		MIYOTA
Hardness			Dimensions		
Plating			Angles		

This drawing is provisional and subject to our reconfirmation and/or revision without notice.



△5			Quantity		Cal.NO.:	
△4			Unit	1 / 1000 mm		
△3			Scale	20 : 1	Parts No.:	
△2			Date		065-453	
△1			Drawn			
Mark	Date	Description	Appr.	Checked	E. Murakami	Name:
Alterations			Approved	SETTING STEM		
Material					Drawing No.: 4530S000	
Heat Treatment					MIYOTA CITIZEN WATCH CO., LTD. TOKYO, JAPAN	
Hardness						
Plating						