

This drawing is provisional and subject to our reconfirmation and/or revision without notice

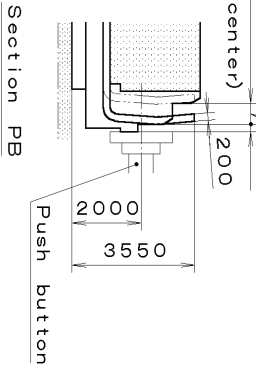
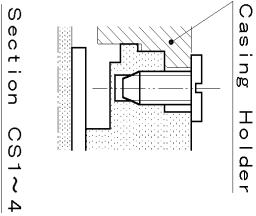
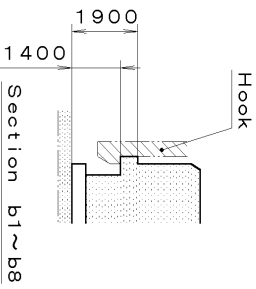
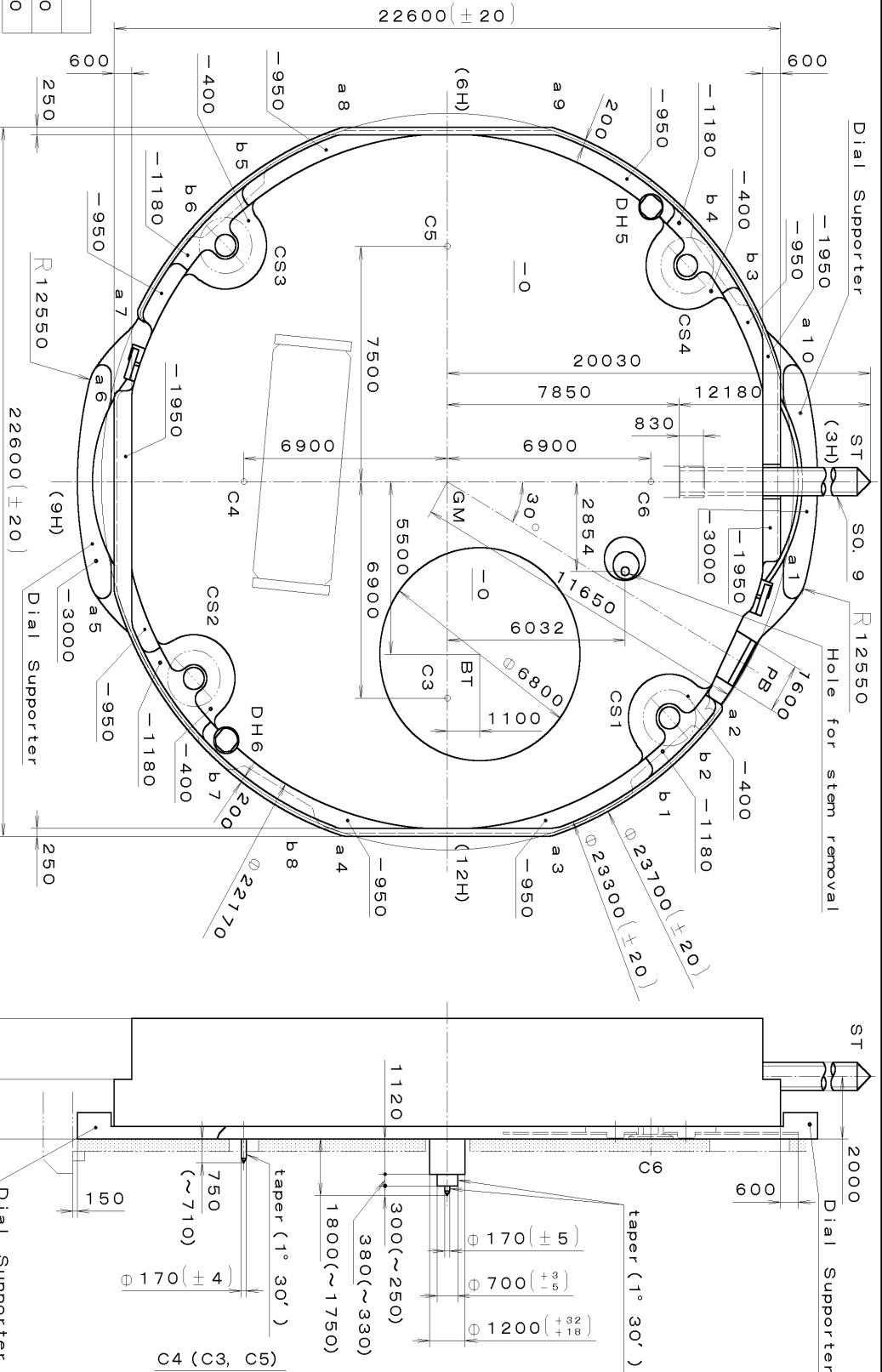
*** TIPW 6P89 (01) *** (2100 1121) 00-07-25

DH5~DH6=22287 (±20)

Coordinates

Mark	X	Y	R
GM	0	0	—
DH5	-8759	6900	—
DH6	8251	-7500	—
a1	2851	11100	200
a2	7235	9131	200
a3	10800	3490	500
a4	10800	-3490	500
a5	3490	-10800	500
a6	-2700	-11100	200
a7	-5389	-10216	300
a8	-10800	-3490	500
a9	-10800	3490	500
a10	-3490	10800	500
b1	9581	6360	150
b2	7928	8331	150
b3	-5773	9946	150
b4	-7839	8415	150
b5	-9572	-6374	150
b6	-7916	-8342	150
b7	9196	-6906	150
b8	10501	-4690	150

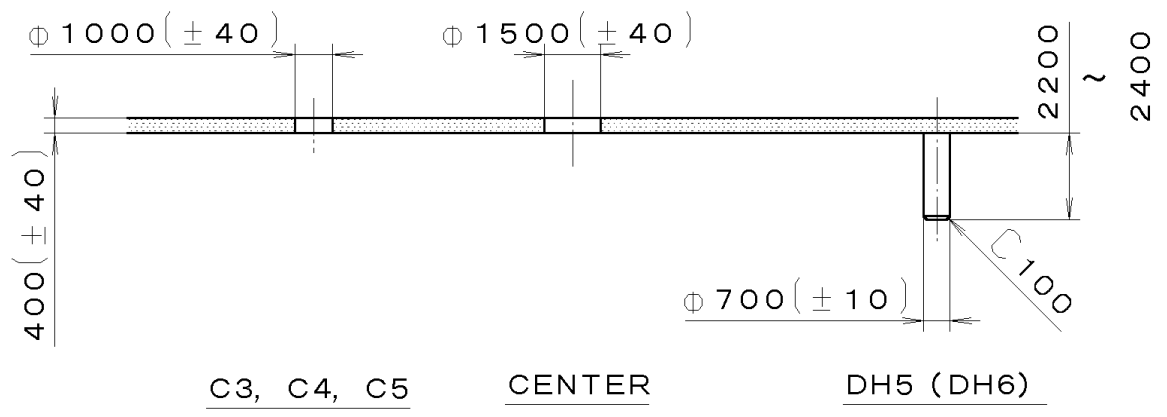
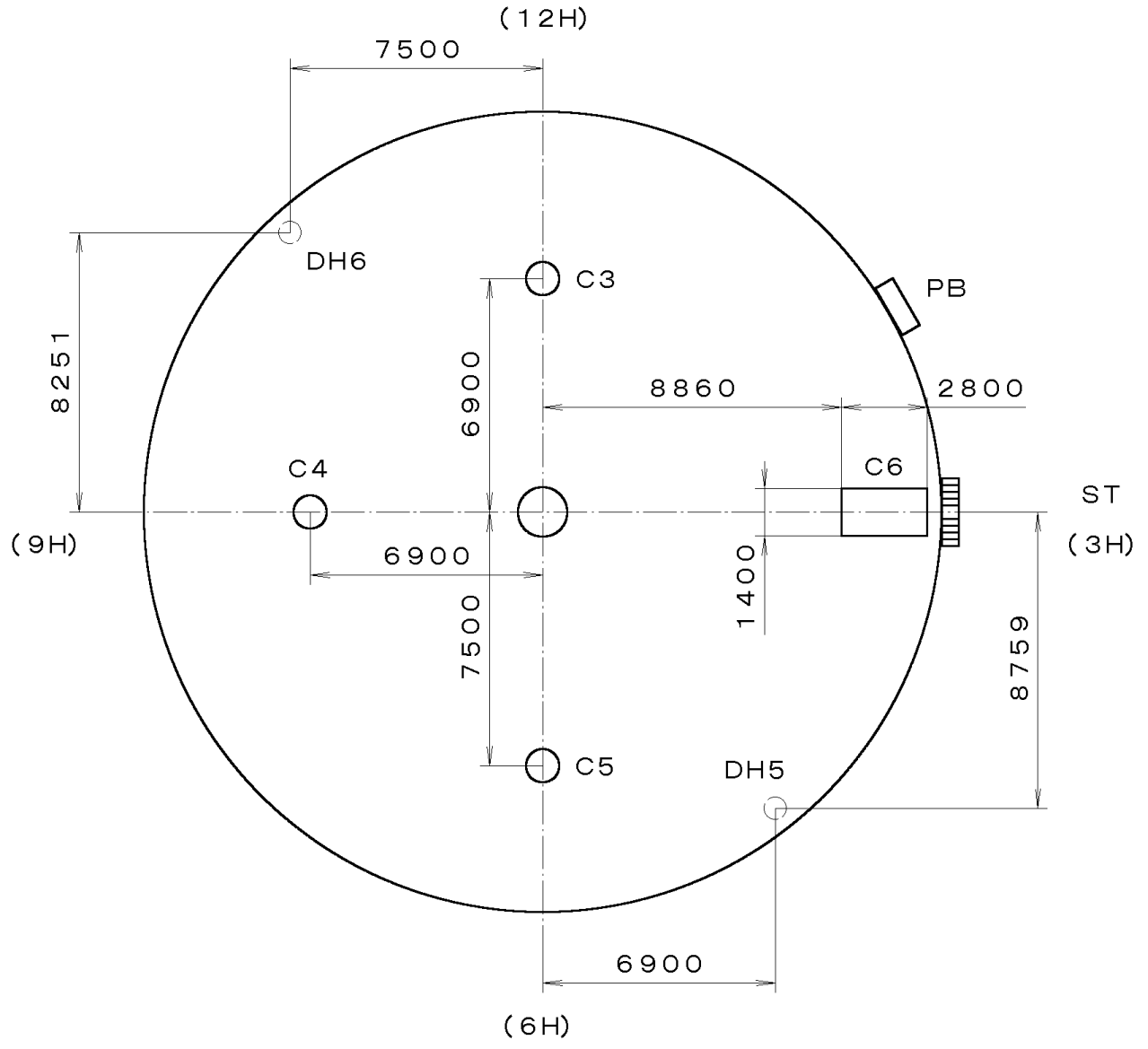
With Battery strap	H
4000	H
Without Battery strap	3850



Material	Quantity	Unit	Scale	Date	Drawn	Checked	Approved	Name	Frame for Case	Drawing No.:
Heat Treatment	1/1000	mm	7:1					T. Hiruta		6P89
Hardness										
Plating										
General Tolerances										
Dimensions										
Angles										

MIYOTA

This drawing is provisional and subject to our reconfirmation and/or revision without notice.



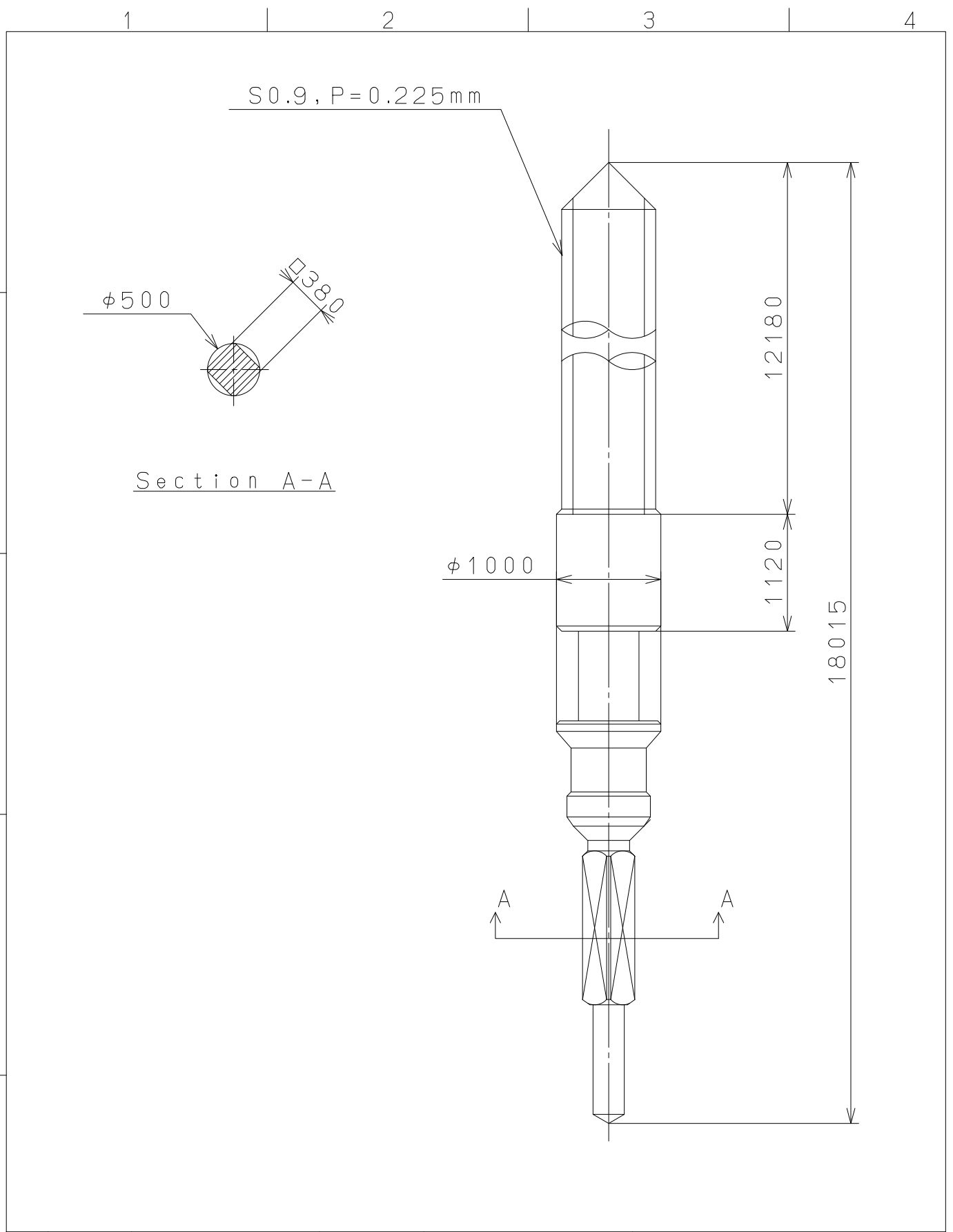
C3, C4, C5 CENTER DH5 (DH6)

*** T I P W *** 6P89-00A (01) *** (2100 1121)	7	Quantity		Cal. No. : 6P89-00A
	6	Unit	1/1000 mm	
	5	Scale	5:1	Parts:
	4	Date		
	3	Drawn		
2	Checked	T. Hiruta	Name:	
1	Approved		Indications for Dial	
Material				Drawing No. : 6P89D000
Heat Treatment		General Tolerances		MIYOTA
Hardness		Dimensions		
Plating		Angles		

00-07-24

2010/05/12 (17:15:34)

This drawing is provisional and subject to our reconfirmation and/or revision without notice.



⑤			Quantity		Cal.NO.:
④			Unit	1/1000 _{mm}	
③			Scale	20:1	Parts No.:
②			Date		065-379
①			Drawn		
Mark	Date	Description	Appro.	Checked	T.Hiruta
Alterations			Approved	Name:	
			SETTING STEM		
Material					Drawing No.:3790S000
Heat Treatment					MIYOTA
Hardness					
Plating					
				CITIZEN WATCH CO.,LTD. TOKYO,JAPAN	