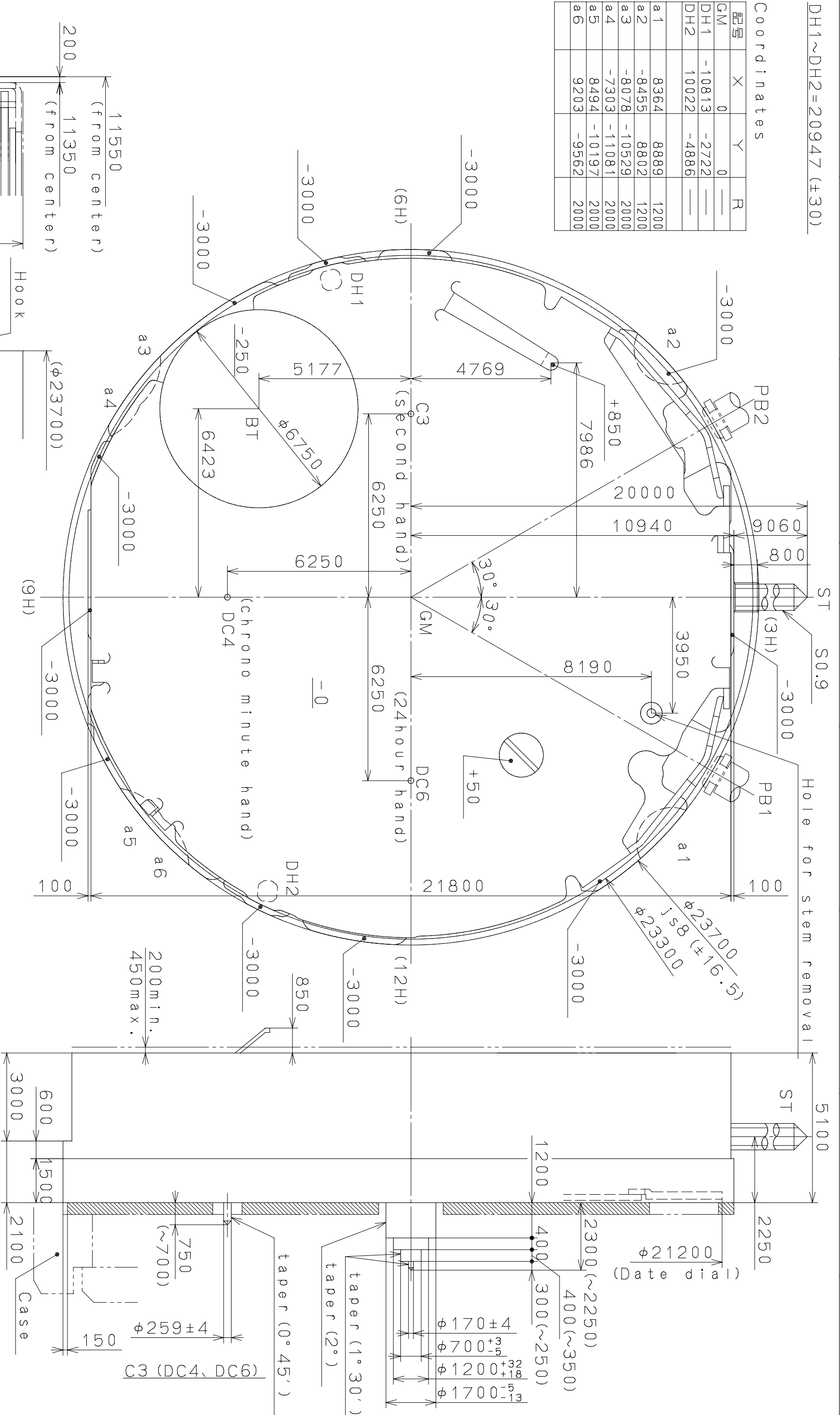


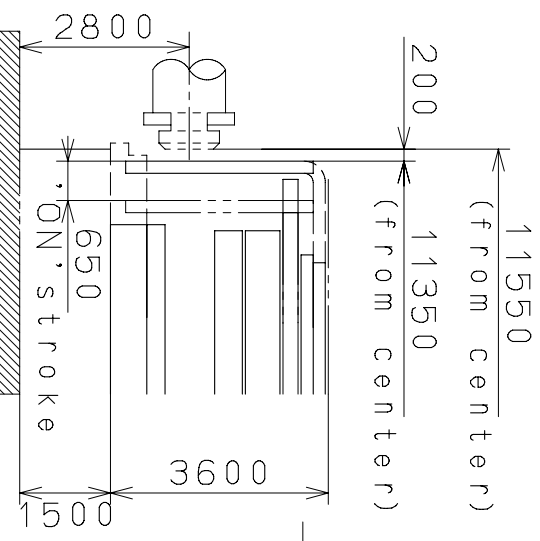
DH1~DH2=20947 (±30)

Coordinates

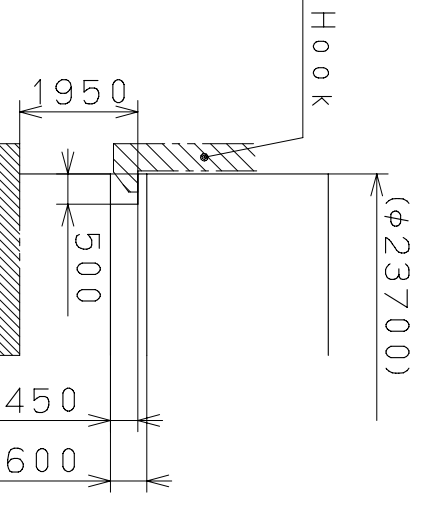
記号	X	Y	R
GM	0	0	—
DH1	-10813	-2722	—
DH2	10022	-4886	—
a1	8364	8889	1200
a2	-8455	8802	1200
a3	-8078	-10529	2000
a4	-7303	-11081	2000
a5	8494	-10197	2000
a6	9203	-9562	2000



Section PB1,2



Section a1~a6



Mark	Date	Description	Appro.	Checked	Drawn	Name:
Δ						Frame for Case
Δ						Drawing No.: FS16C000

Material	Alterations	Quantity	Unit
Material		1	1/1000 mm
Heat Treatment			
Hardness			
Plating			

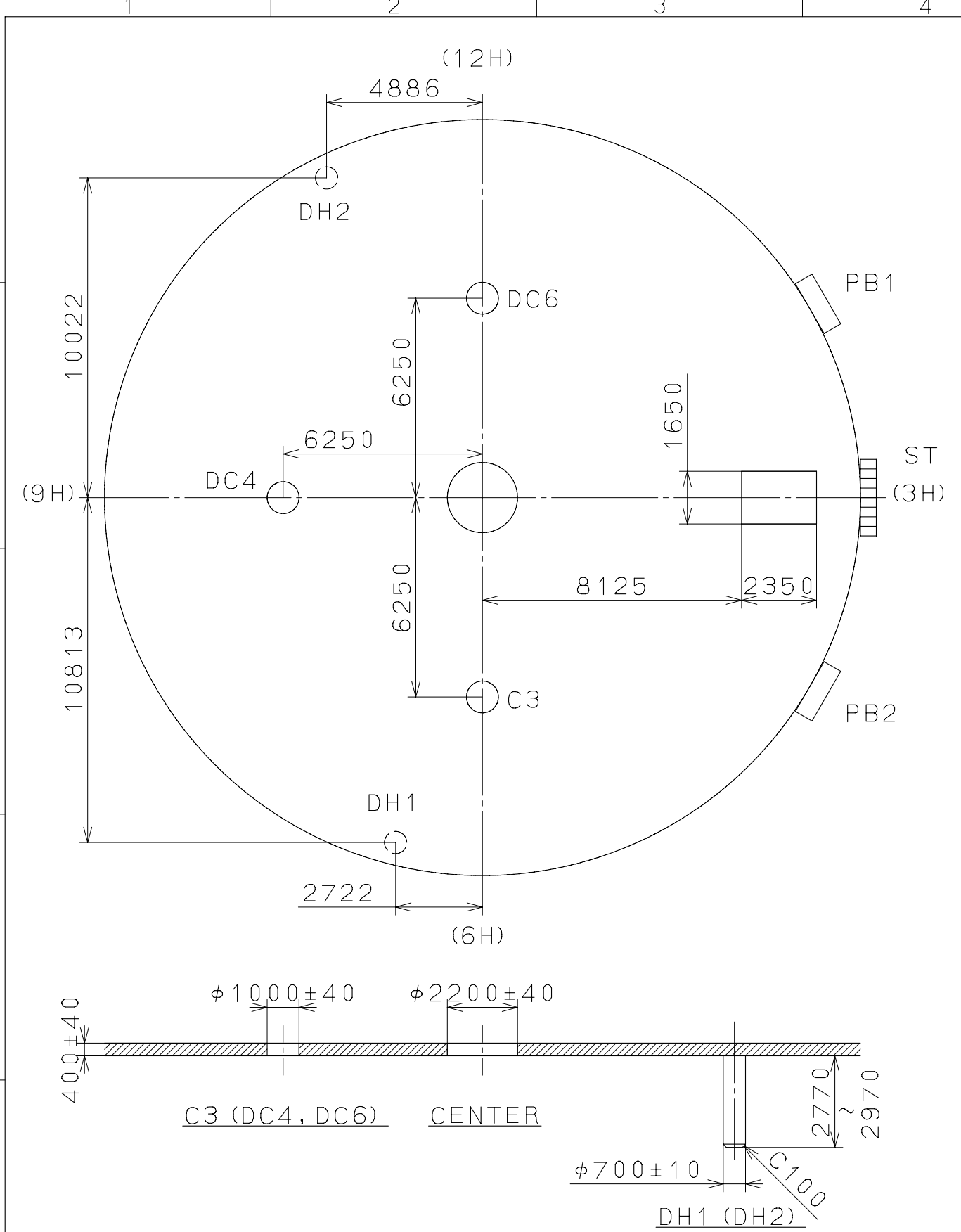
Material	General Tolerances
Material	
Heat Treatment	
Hardness	
Plating	

Cal. NO.: FS16
 Parts No.:
 Name: Frame for Case
 Drawing No.: FS16C000

MIYOTA
 CITIZEN WATCH CO., LTD. TOKYO, JAPAN

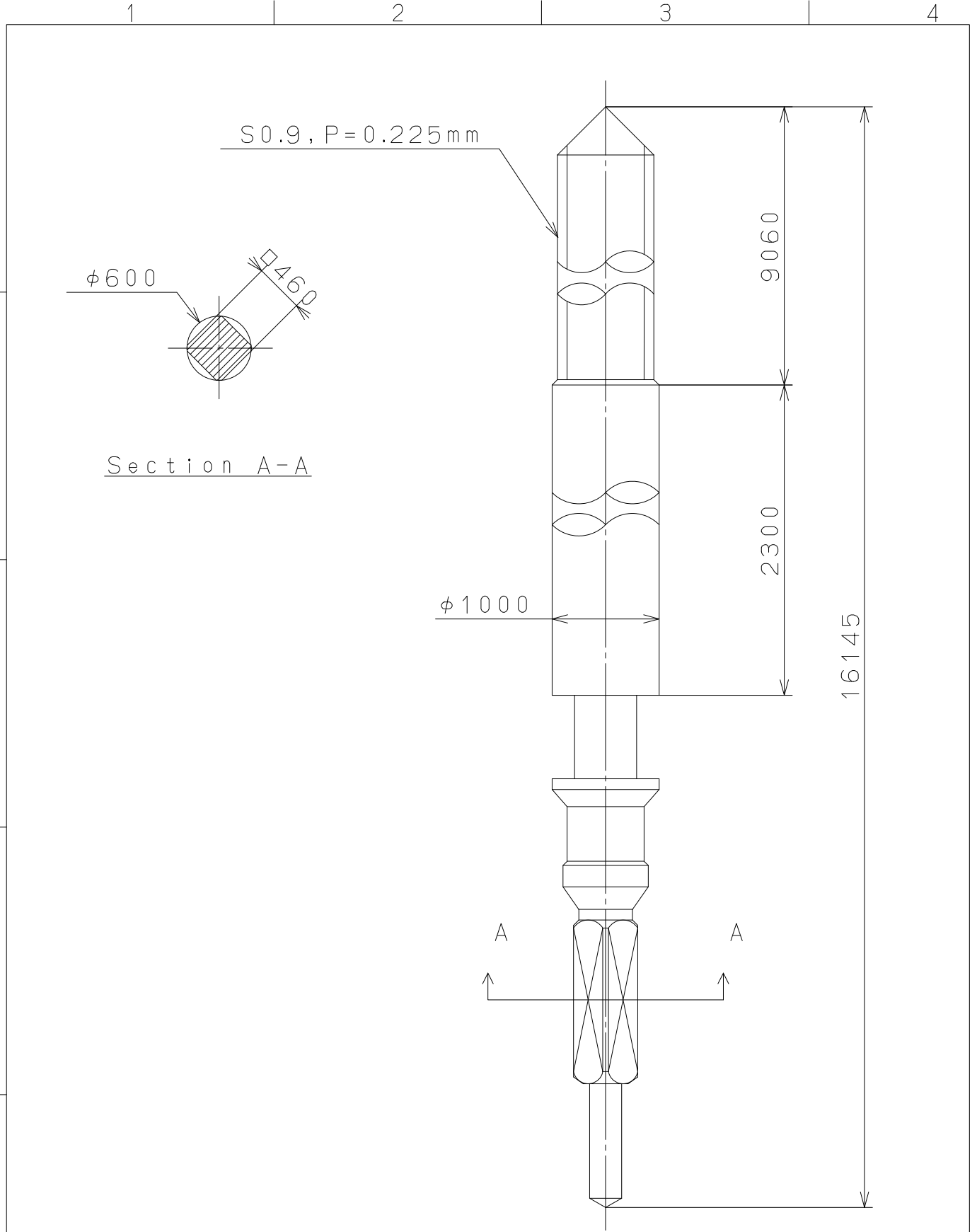
2008/05/30 (09:20:11)

This drawing is provisional and subject to our reconfirmation and/or revision without notice.



△			Quantity		Cal.NO.:
△			Unit	1/1000mm	FS16-00A
△			Scale	6:1	Parts No.:
△			Date		
△			Drawn		
Mark	Date	Description	Appr.	Checked	Name:
		Alterations	Approved	N. Suzuki	Indications for Dial
Material					Drawing No.: FS16D010
Heat Treatment			General Tolerances	MIYOTA CITIZEN WATCH CO., LTD. TOKYO, JAPAN	
Hardness			Dimensions		
Plating			Angles		

This drawing is provisional and subject to our reconfirmation and/or revision without notice.



△			Quantity		Cal.NO.:
△			Unit	1/1000mm	
△			Scale	20:1	Parts No.:
△			Date		065-549
△			Drawn		
Mark	Date	Description	Appro.	Checked M. Kobayashi	Name:
Alterations			Approved		SETTING STEM
Material					Drawing No.: 5490S000
Heat Treatment					MIYOTA
Hardness					
Plating					
					CITIZEN WATCH CO., LTD. TOKYO, JAPAN