

DH1~DH2=16171 (±20)

ST (3H)

Coordinates

記号	X	Y	R
GM	0	0	—
a1	-7838	-4250	500
a2	-6550	-4855	300
a3	-5951	-4888	300
a4	6101	-4790	300
a5	6700	-4756	300

Hole for stem removal

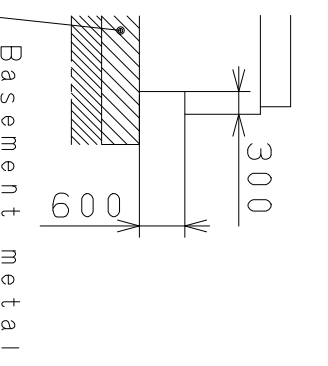
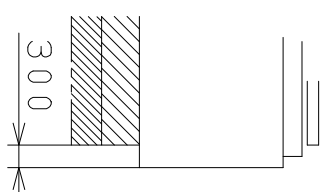
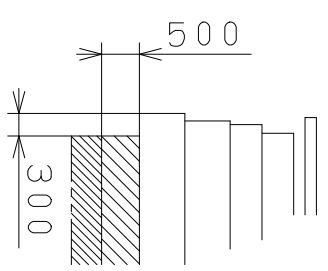
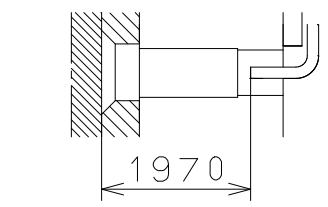
taper (1° 30')

Section DH2

Section A-A

Section B-B

Section C-C



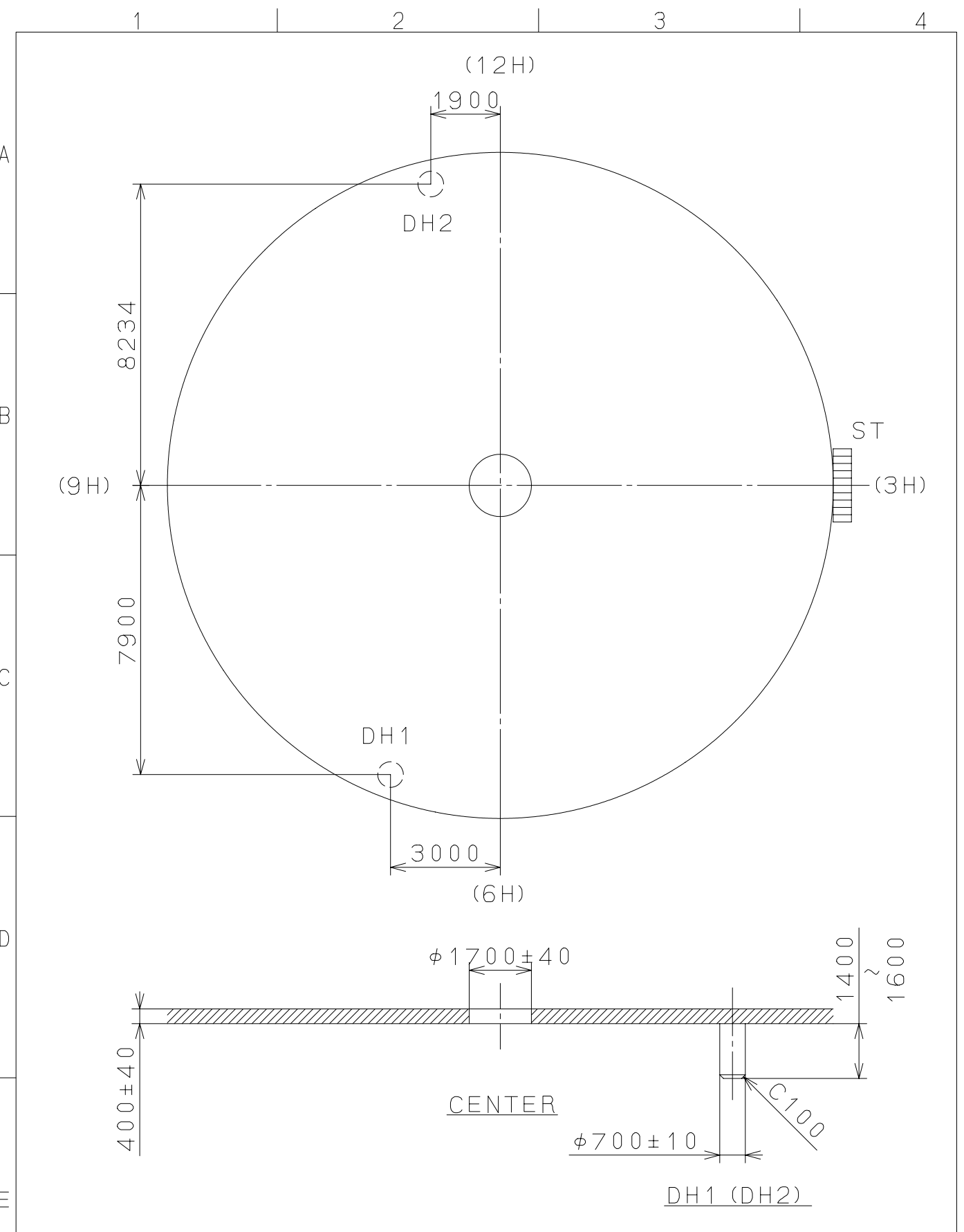
Material	Alterations	Quantity	Cal. NO.:
Heat Treatment	Date	Unit	2035
Hardness	Description	Scale	Parts No.:
Plating	Appr.	Checked	
	Drawn	Drawn	
	Checked	Checked	
	Approved	Approved	
		M. Fukuda	Name:
			Frame for Case
			Drawing No.: 2035C010
			General Tolerances
			Dimensions
			Angles

MIYOTA

CITIZEN WATCH CO., LTD. TOKYO, JAPAN

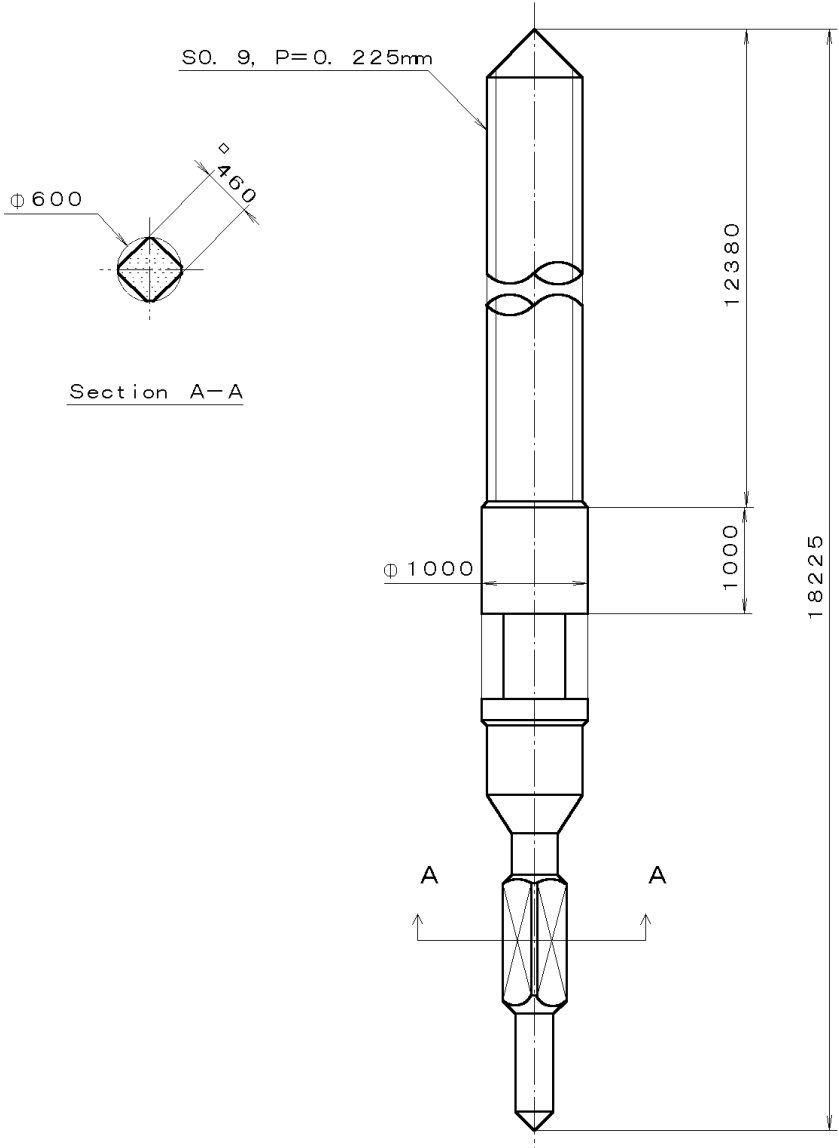
2005/08/19 (10:22:51)

This drawing is provisional and subject to our reconfirmation and/or revision without notice.



△			Quantity		Cal. NO.: SUPER2035
△			Unit	1 / 1000 mm	
△			Scale	7 / 1	Parts No.:
△			Drawn	Date	Name
△			Checked	M. Fukuda	Name:
		Alterations	Approved		Indications for Dial
	Material				Drawing No.: 2035D001
F	Heat Treatment		General Tolerances	MIYOTA	
	Hardness		Dimensions		
	Plating		Angles		
				CITIZEN WATCH CO., LTD. TOKYO, JAPAN	

This drawing is provisional and subject to our reconfirmation and/or revision without notice



*** T.P.W. 065-468 (G1) *** (G100.1121) 00-07-28

△			Quantity		Cal. No. :
△			Unit	1/1000 mm	Parts:
△			Scale	20:1	
△			Date		065-468
△			Drawn		
△			Checked	T. Hiruta	Name:
△			Approved		SETTING STEM
Material					Drawing No. : 4680S000
Heat Treatment			General Tolerances		CITIZEN WATCH CO.,LTD. TOKYO, JAPAN
Hardness			Dimensions		
Plating			Angles		