

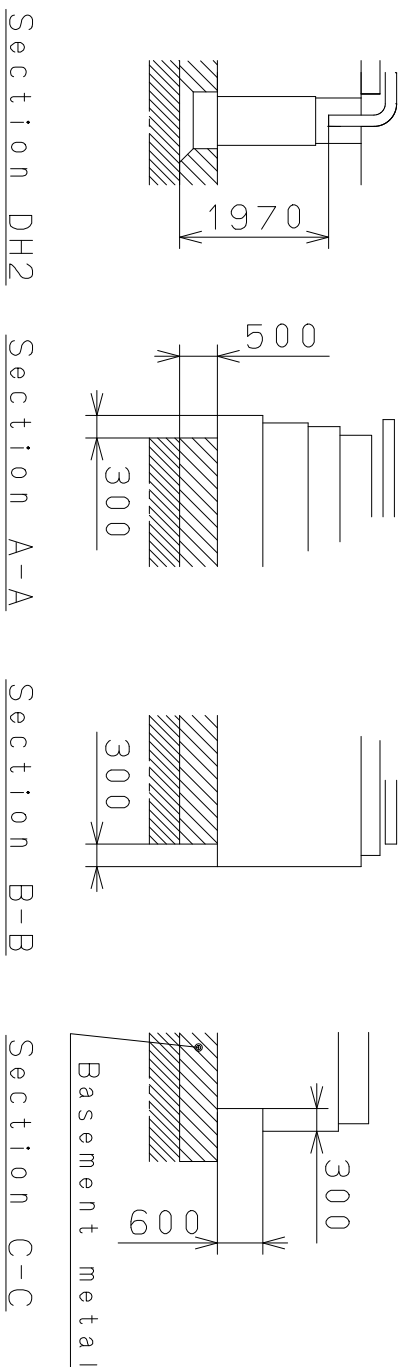
DH1~DH2=16171 (±20)

ST (3H)

Coordinates

記号	X	Y	R
GM	0	0	—
a1	-7838	-4250	500
a2	-6550	-4855	300
a3	-5951	-4888	300
a4	6101	-4790	300
a5	6700	-4756	300

Hole for stem removal

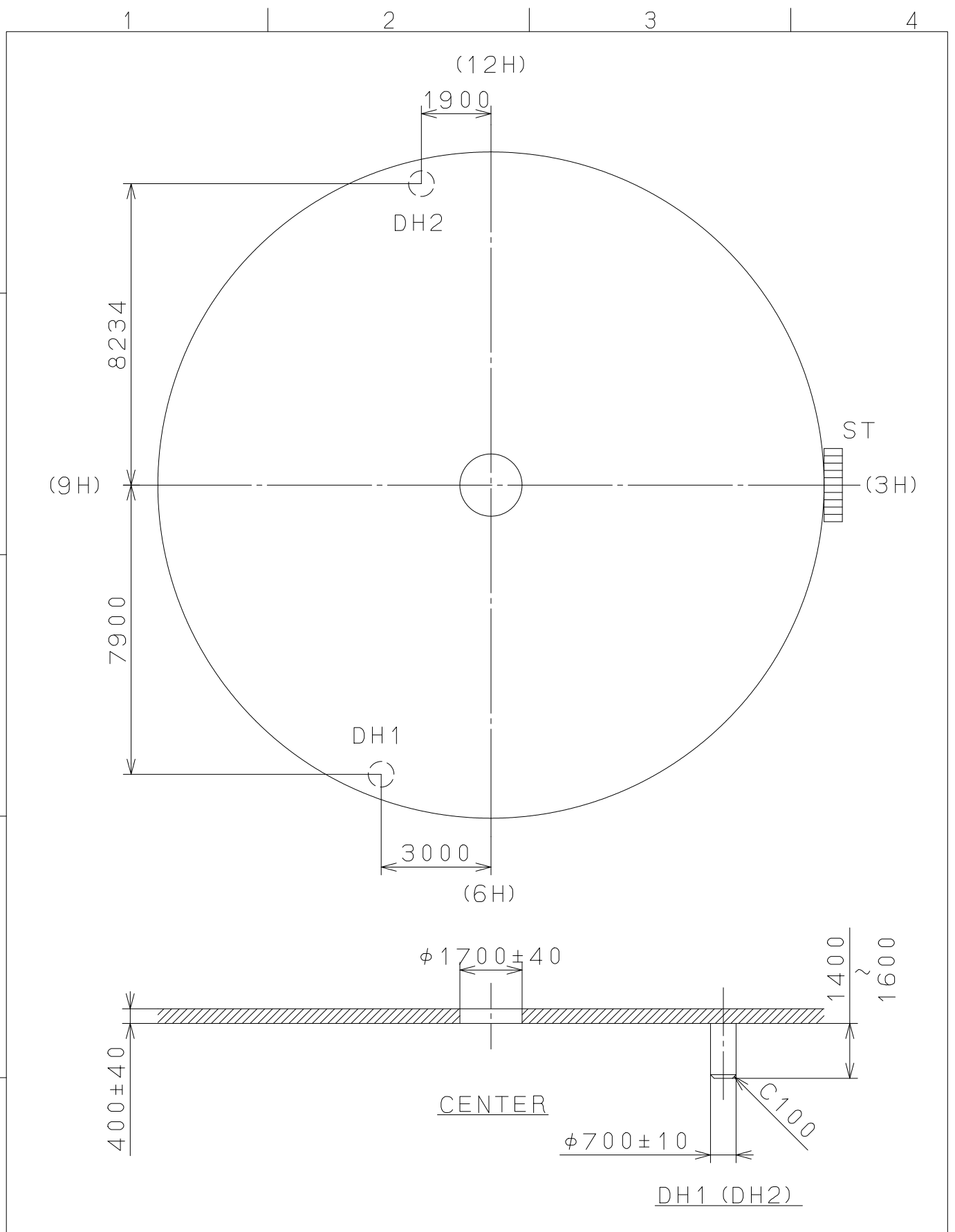


Material	Alterations	Date	Description	Appr.	Checked	Drawn	M. Fukuda
Heat Treatment							
Hardness							
Plating							
Quantity	Unit	Scale	1/1000 mm	Parts No.:	2035	Cal. NO.:	2035
General Tolerances	Dimensions	Angles	10:1	Name:	Frame for Case	Drawing No.:	2035C010

**MIYOTA**  
CITIZEN WATCH CO., LTD. TOKYO, JAPAN

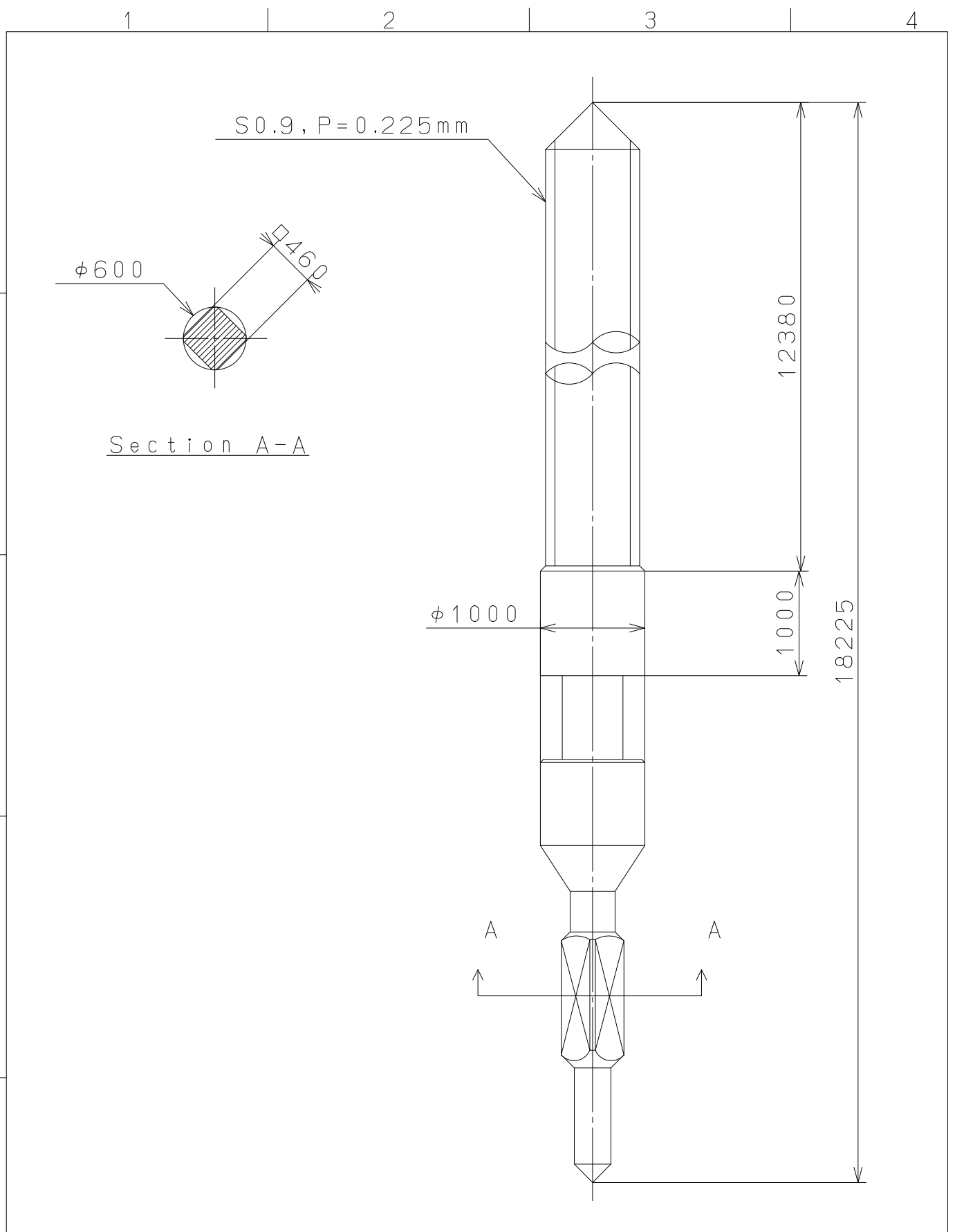
2009/08/21 (11:21:23)

This drawing is provisional and subject to our reconfirmation and/or revision without notice.



△5			Quantity		Cal.NO.:
△4			Unit	1/1000mm	2035-00A
△3			Scale	7:1	Parts No.:
△2			Date		
△1			Drawn		
Mark	Date	Description	Appr.	Checked	Name:
		Alterations	Approved	T.Hiruta	Indications for Dial
Material					Drawing No.:2035D000
Heat Treatment			General Tolerances	<b>MIYOTA</b> CITIZEN WATCH CO.,LTD. TOKYO,JAPAN	
Hardness			Dimensions		
Plating			Angles		

This drawing is provisional and subject to our reconfirmation and/or revision without notice.



△5			Quantity		Cal.NO.:
△4			Unit	1 / 1000 mm	
△3			Scale	20 : 1	Parts No.:
△2			Date		065-468
△1			Drawn		
Mark	Date	Description	Appro.	Checked M. Kobayashi	Name:
Alterations			Approved		SETTING STEM
Material					Drawing No.: 4680S001
Heat Treatment	General Tolerances				<b>MIYOTA</b>
Hardness	Dimensions				
Plating	Angles				
					CITIZEN WATCH CO., LTD. TOKYO, JAPAN