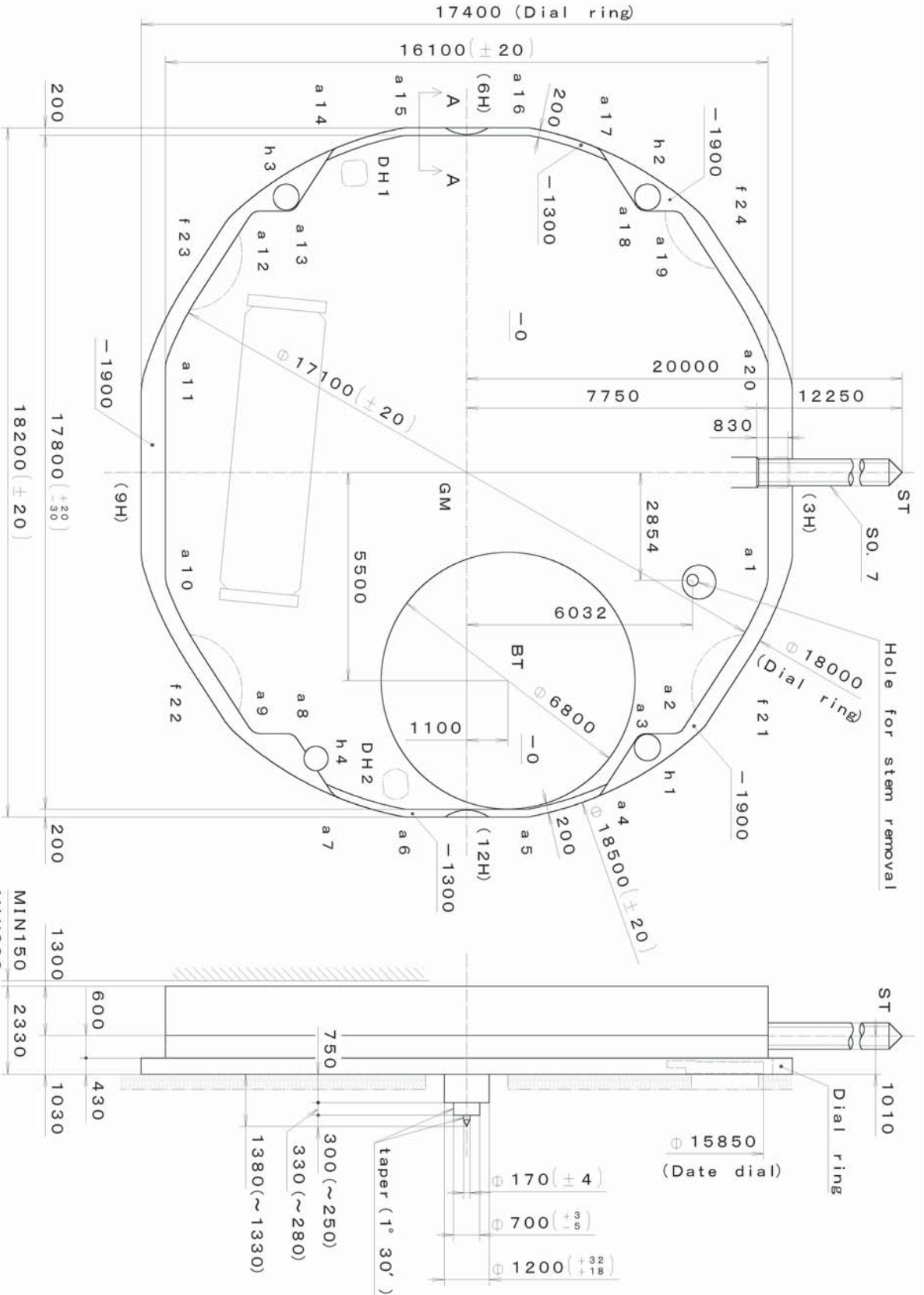


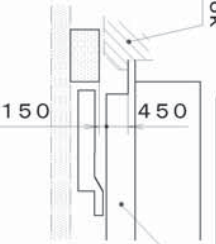
DH1~DH2=16171 (±20)

Coordinates

Mark	X	Y	R
GM	0	0	—
h1	7270	4825	350
h2	-7270	4825	350
h3	-7270	-4825	350
h4	7557	-4025	325
DH1	-7900	-3000	—
DH2	8234	-1900	—
a1	2793	7550	500
a2	6600	5539	300
a3	7200	4787	300
a4	8299	3350	300
a5	8800	1632	300
a6	8800	-1632	300
a7	8299	-3350	300
a8	7200	-4787	300
a9	6600	-5539	300
a10	2793	-7550	500
a11	-2793	-7550	500
a12	-6600	-5539	300
a13	-7200	-4787	300
a14	-8299	-3350	300
a15	-8100	-1566	1000
a16	0	0	9250
a17	-8299	3350	300
a18	-7200	4787	300
a19	-6600	5539	300
a20	-2793	7550	500
f21	5788	7505	1500
f22	5788	-7505	1500
f23	-5788	-7505	1500
f24	-6864	6800	1500

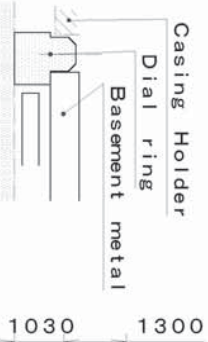


Hook
Basement metal



Section f21~f24

Casing Holder
Dial ring
Basement metal



Section h1~h4

Basement metal

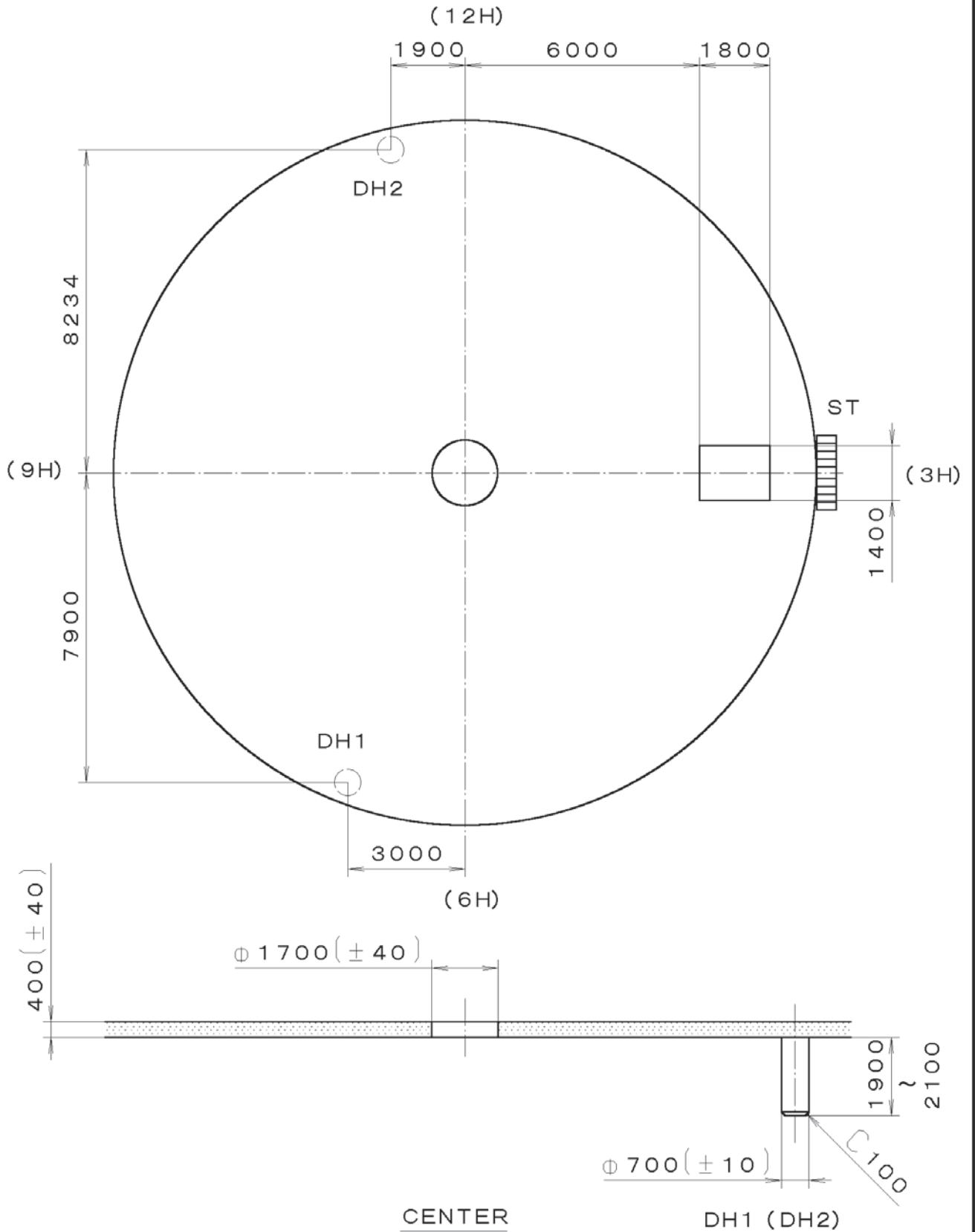


Section A-A

Material	Quantity	Unit	Cal. No. : 9T13
Heat Treatment	Scale	1/1000 mm	Parts :
Hardness	Date	9:1	Drawn
Plating	Checked	T. Hiruta	Checked
	Approved		Name : Frame for Case
			Drawing No. : 9T13C001
General Tolerances			
Dimensions			
Angles			

MİYOTA

This drawing is provisional and subject to our reconfirmation and/or revision without notice.

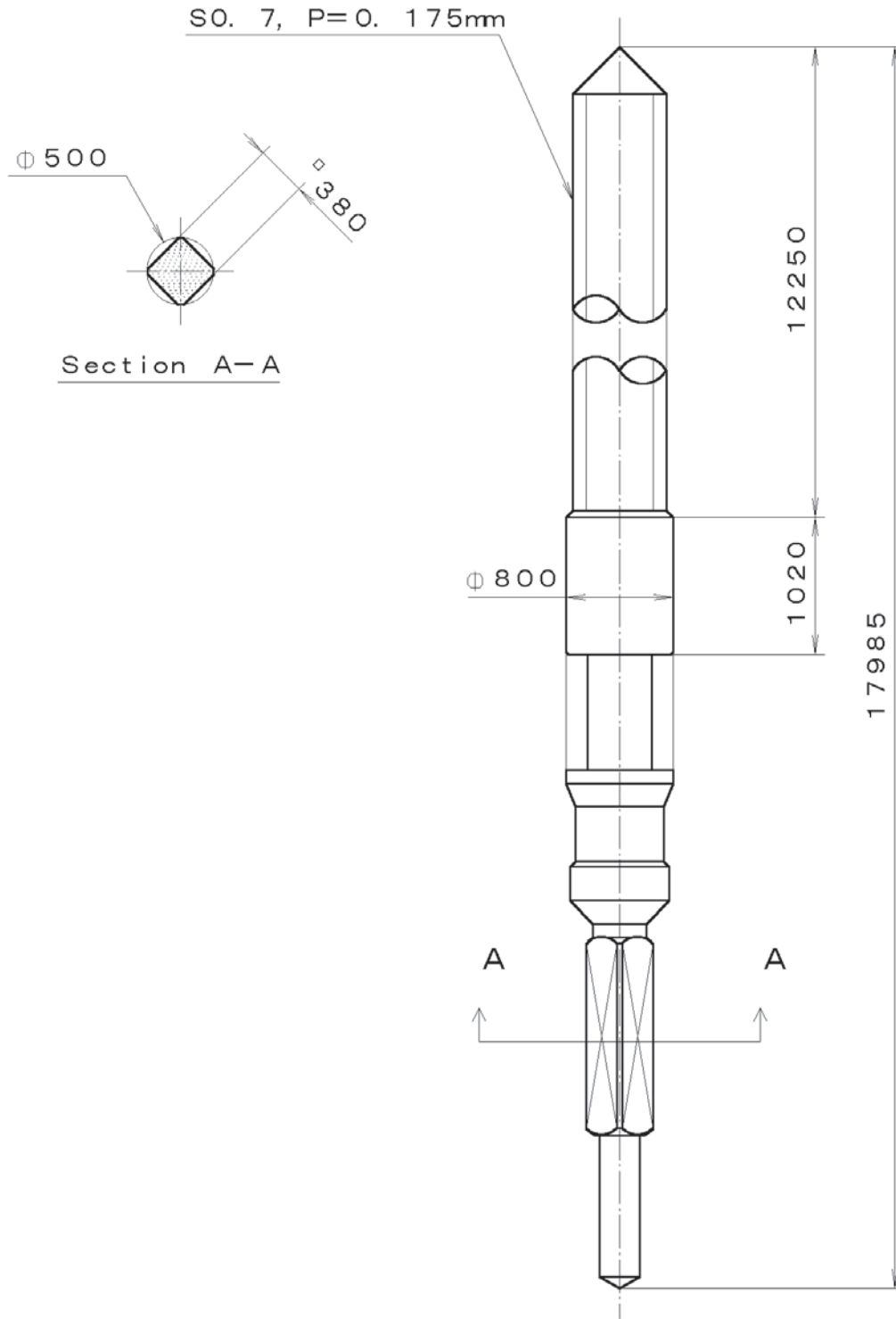


00-06-22
(2100 1121)
9T13-00A (01) xxx
xxx TIPW

△7		Quantity		Cal. No. :	9T13-00A
△6		Unit	1/1000 mm	Parts:	
△5		Scale	7:1	Name:	Indications for Dial
△4		Date		Drawing No. :	9T13D000
△3		Drawn			
△2		Checked	T. Hiruta		
△1		Approved			
Material					
Heat Treatment		General Tolerances		MIYOTA	
Hardness		Dimensions			
Plating		Angles			

This drawing is provisional and subject to our reconfirmation and/or revision without notice.

065-495 (01) *** (2100 1121 A-01 A-01) 00-06-22



7		Quantity		Cal. No. :
6		Unit	1/1000 mm	
5		Scale	20:1	Parts:
4		Date		065-495
3		Drawn		
2		Checked	T. Hiruta	Name:
1		Approved		SETTING STEM
Material		SuS420F-DG		Drawing No. : 4950S000
Heat Treatment		焼入焼戻		MIYOTA
Hardness		HV550		
Plating		Angles		
		General Tolerances		
		Dimensions		