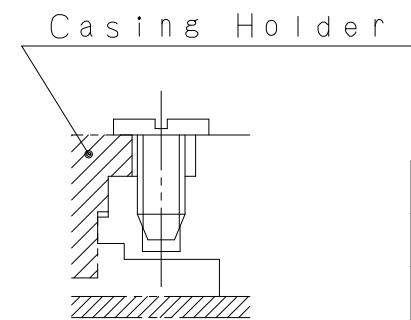
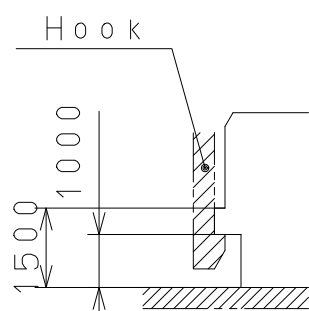
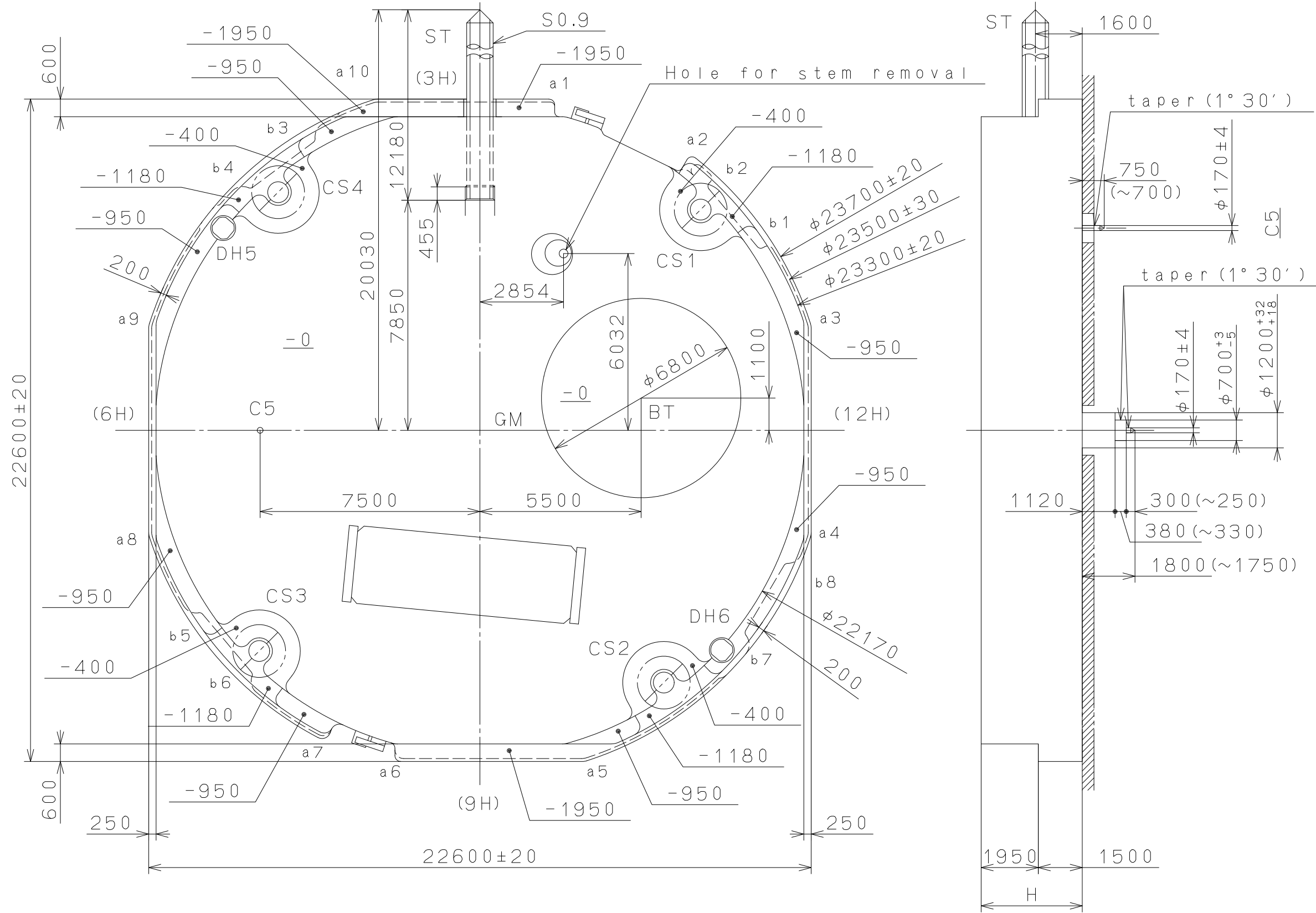


DH5~DH6=22287 (±20)

Coordinates

記号	X	Y	R
GM	0	0	—
DH5	-8759	6900	—
DH6	8251	-7500	—
a1	2351	11100	200
a2	7235	9131	200
a3	10800	3490	500
a4	10800	-3490	500
a5	3490	-10800	500
a6	-2700	-11100	200
a7	-5389	-10216	300
a8	-10800	-3490	500
a9	-10800	3490	500
a10	-3490	10800	500
b1	9581	6360	150
b2	7928	8331	150
b3	-5773	9946	150
b4	-7839	8415	150
b5	-9572	-6374	150
b6	-7916	-8342	150
b7	9196	-6906	150
b8	10501	-4690	150



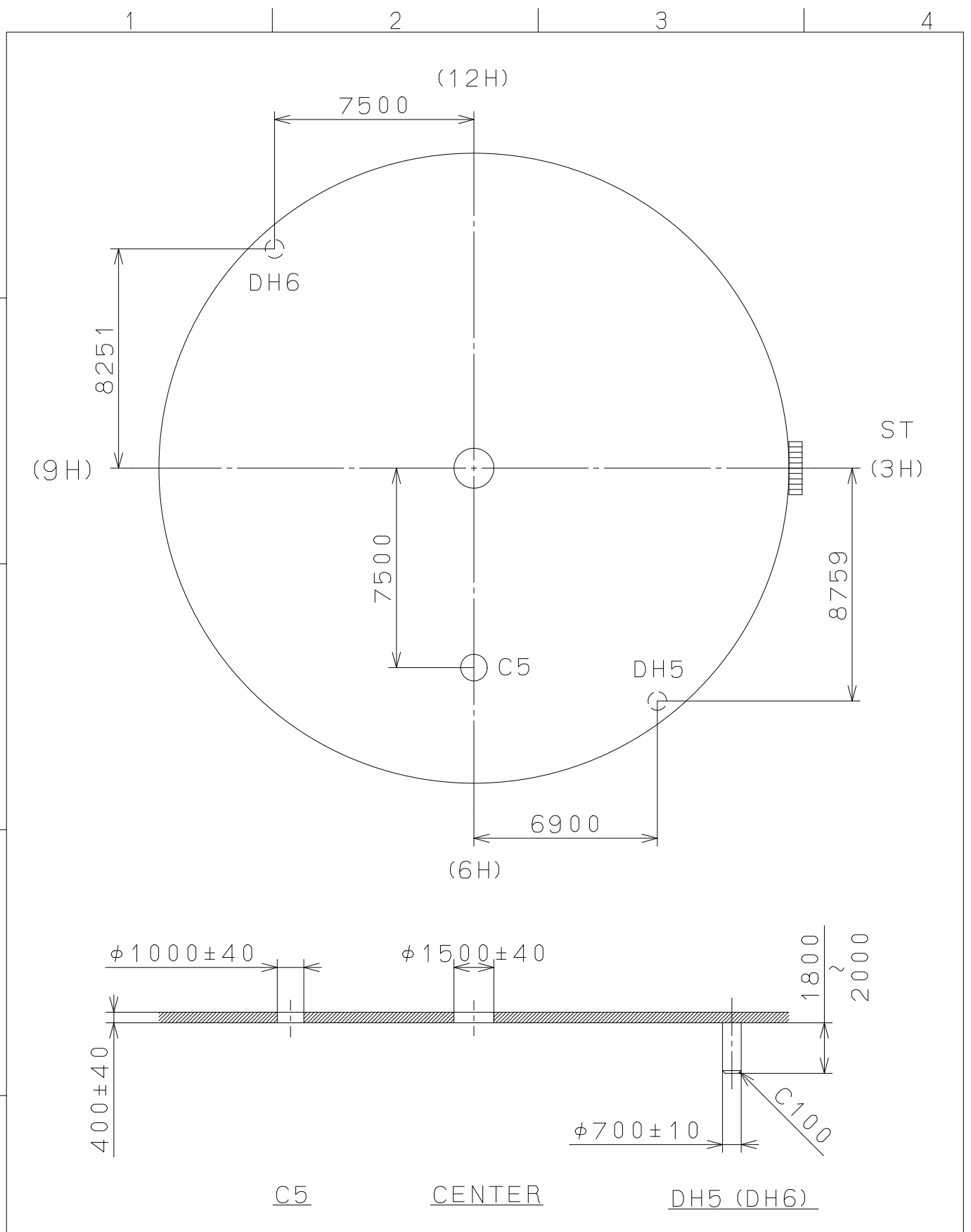
	H
With Battery strap	3600
Without Battery strap	3450

△5		Quantity		Cal.NO.:	
△4		Unit	1/1000mm		6P28
△3		Scale	7:1	Parts No.:	
△2		Date			
△1		Drawn			
Mark	Date	Description	Appr.	Checked	E. Murakami
Alterations				Approved	
Material				General Tolerances	
Heat Treatment				Dimensions	
Hardness				Angles	
Plating					
					MIYOTA
					CITIZEN WATCH CO.,LTD. TOKYO, JAPAN

MIYOTA

CITIZEN WATCH CO.,LTD. TOKYO, JAPAN

This drawing is provisional and subject to our reconfirmation and/or revision without notice.

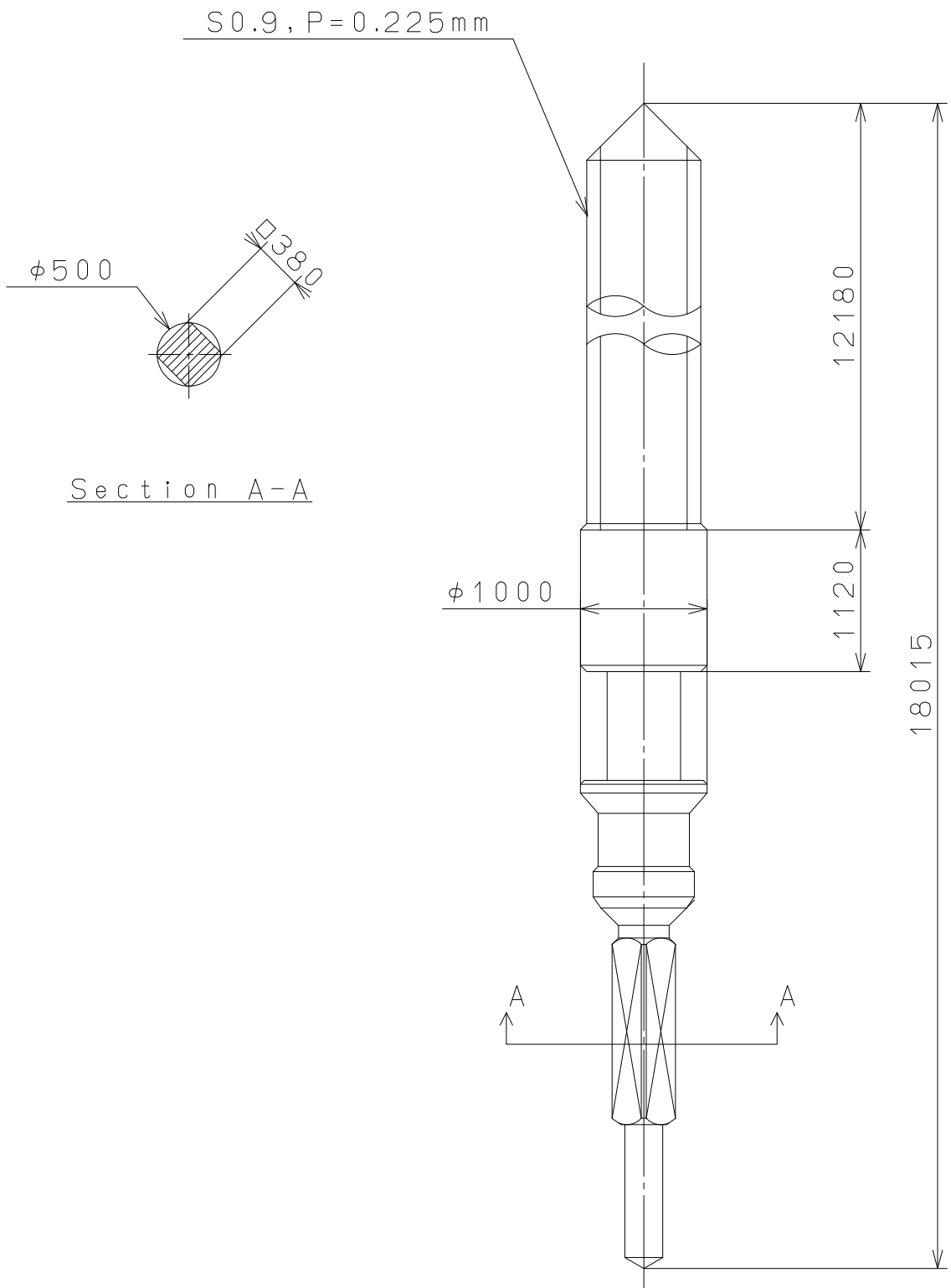


△			Quantity		Cal.NO.:
△			Unit	1 / 1000 mm	6P28-00A
△			Scale	5 : 1	Parts No.:
△			Date		
△			Drawn		
Mark	Date	Description	Appr.	Checked	E. Murakami
Alterations			Approved	Name:	
Material					Indications for Dial
Heat Treatment					Drawing No.: 6P28D000
Hardness					MIYOTA
Plating					

2010/05/12 (17:15:34)

This drawing is provisional and subject to our reconfirmation and/or revision without notice.

A
B
C
D
E
F



⑤			Quantity		Cal.NO.:
④			Unit	1/1000mm	
③			Scale	20:1	Parts No.:
②			Date		065-379
①			Drawn		
Mark	Date	Description	Appro.	Checked	T.Hiruta
Alterations			Approved	Name: SETTING STEM	
Material				Drawing No.:3790S000	
Heat Treatment				MIYOTA CITIZEN WATCH CO.,LTD. TOKYO,JAPAN	
Hardness					
Plating					