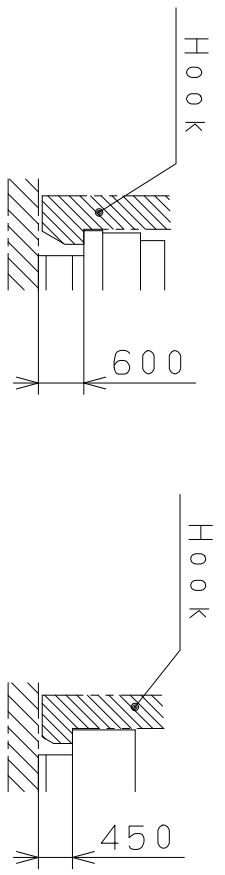
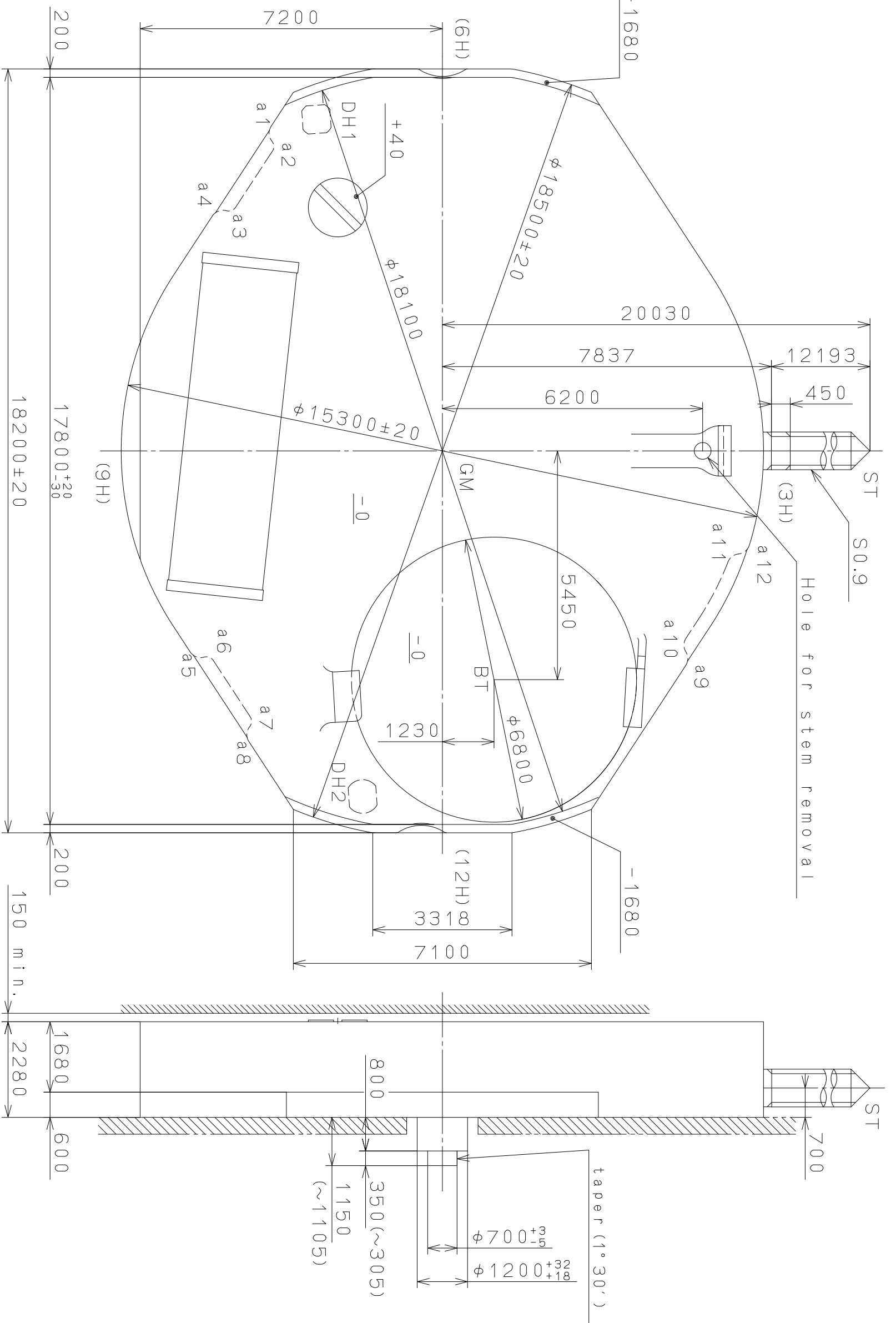


This drawing is provisional and subject to our reconfirmation and/or revision without notice.

DH1~DH2=16171 (±20)

Coordinates

Mark	X	Y	R
GM	0	0	—
DH1	-7900	-3000	—
DH2	8234	-1900	—
a1	-7569	-3828	300
a2	-7252	-4215	200
a3	-5914	-5092	200
a4	-5433	-5228	300
a5	4625	-5757	300
a6	5106	-5621	200
a7	6444	-4745	200
a8	6761	-4358	300
a9	4947	5546	300
a10	4628	6054	300
a11	2754	7083	300
a12	2157	7026	300



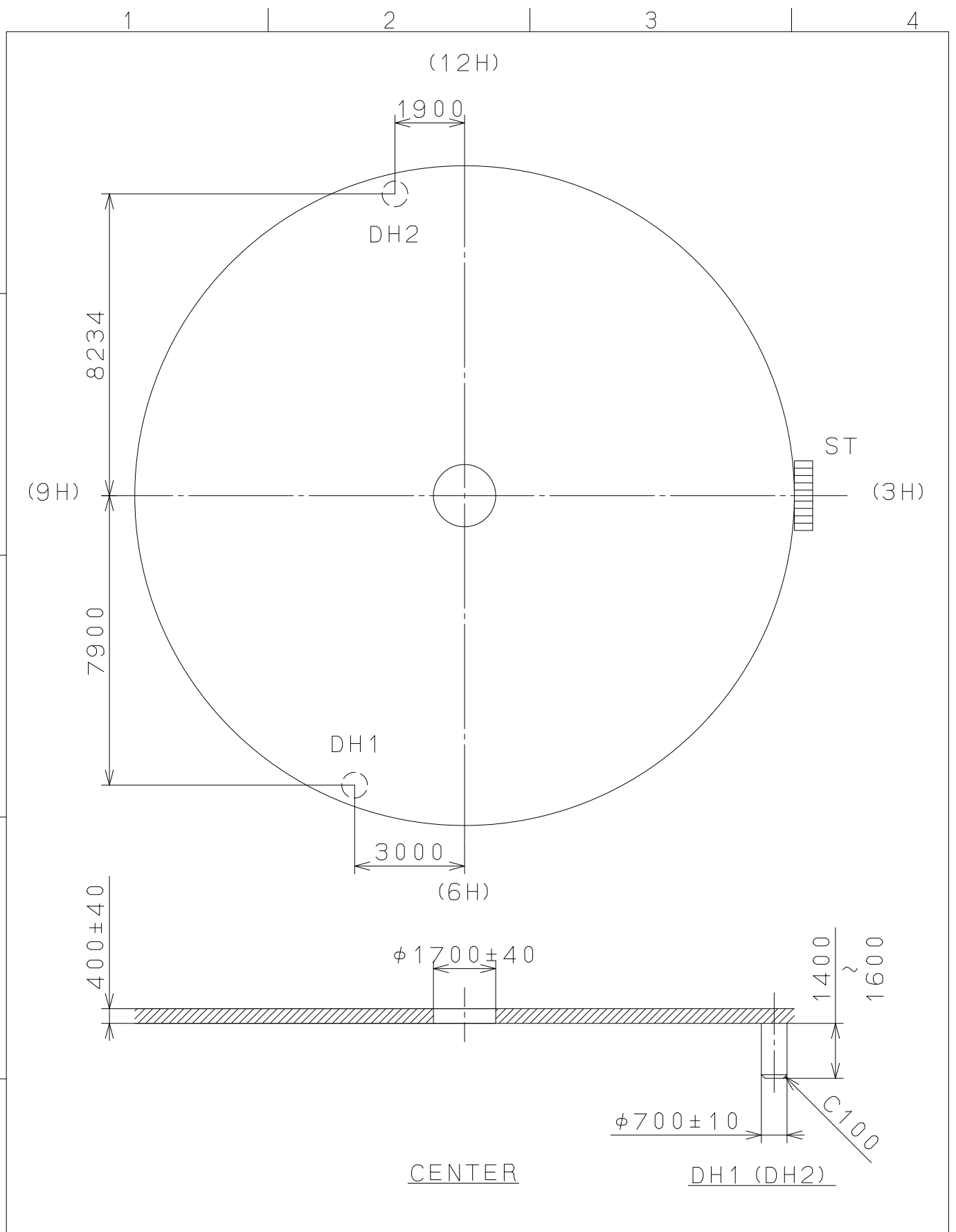
Section a1~a4, a5~a8

Section a9~a12

△	Quantity	1/1000 mm	Cal. NO. GL22
△	Unit	10 : 1	Parts No.:
△	Scale		
△	Date		
△	Drawn		
△	Checked	N. Suzuki	Name:
△	Approved		Frame for Case
Material	Alterations		Drawing No.: GL20C001
Heat Treatment			
Hardness			
Plating			
	General Tolerances		
	Dimensions		
	Angles		

MIYOTA
CITIZEN WATCH CO., LTD. TOKYO, JAPAN

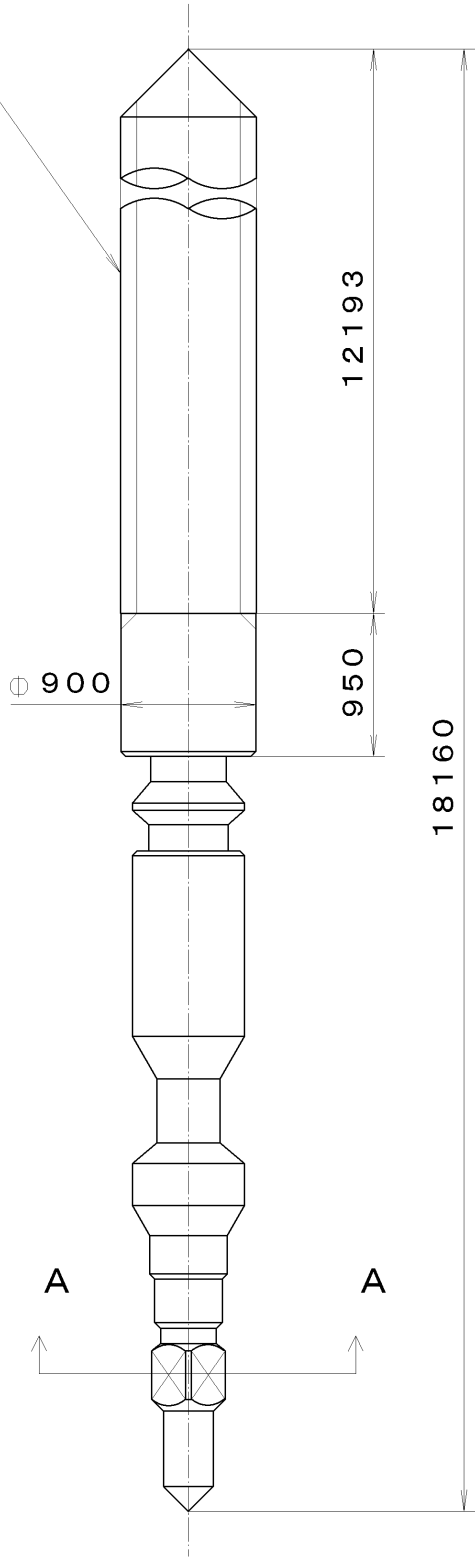
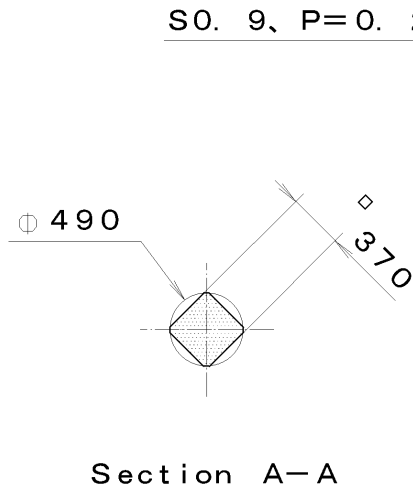
This drawing is provisional and subject to our reconfirmation and/or revision without notice.



△			Quantity		Cal. NO. GL22-10A
△			Unit	1 / 1000 mm	
△			Scale	7 : 1	Parts No.:
△			Date		
△			Drawn		
Mark	Date	Description	Appr.	Checked M. Kobayashi	Name:
Alterations			Approved		Indications for Dial
Material					Drawing No.: GL20D000
Heat Treatment					MIYOTA
Hardness					
Plating					
					CITIZEN WATCH CO., LTD. TOKYO, JAPAN

This drawing is provisional and subject to our reconfirmation and/or revision without notice.

*** T I P W 065-541 (01) *** (2100 1121) 02-07-12



7				Quantity		Cal. No. :	
6				Unit	1/1000 mm	Parts: 065-541	
5				Scale	20:1		
4				Date			
3				Drawn		Name: SETTING STEM	
2				Checked	T. Hiruta		
1				Approved			
Material						Drawing No. : 5410S000	
Heat Treatment				General Tolerances		<div style="font-size: 2em; font-weight: bold; margin-bottom: 5px;">CITIZEN</div> WATCH CO., LTD. TOKYO, JAPAN	
Hardness				Dimensions			
Plating				Angles			