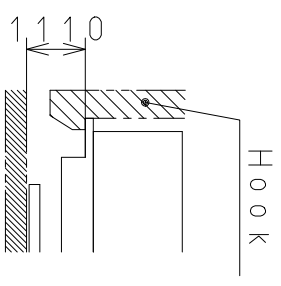
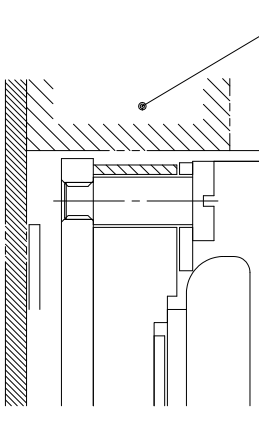
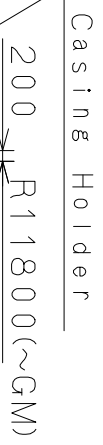
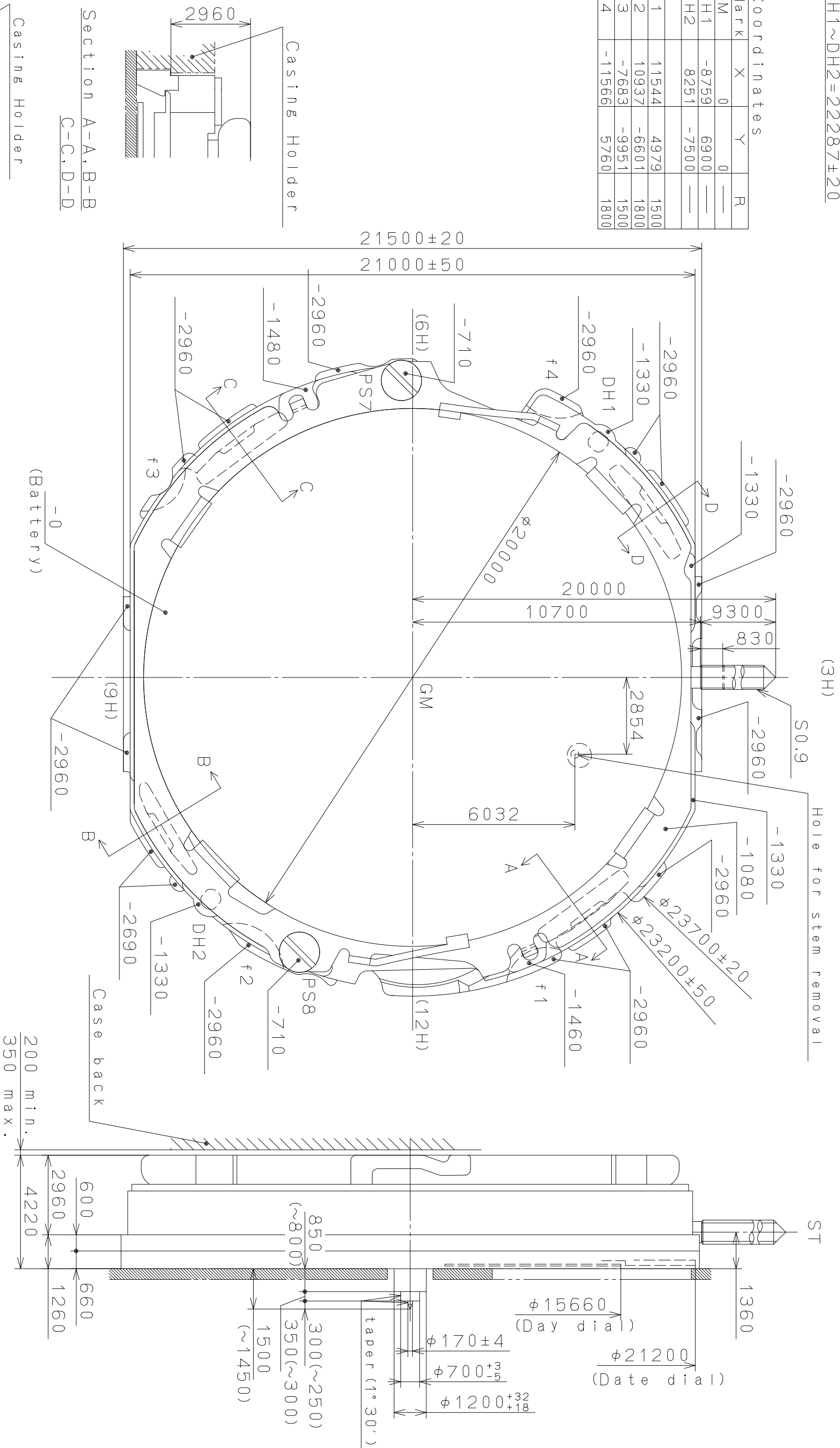


This drawing is provisional and subject to our reconfirmation and/or revision without notice.

DH1~DH2=22287±20

Coordinates			
Mark	X	Y	R
GM	0	0	—
DH1	-8759	6900	—
DH2	8251	-7500	—
f1	11544	4979	1500
f2	10937	-6601	1800
f3	-7683	-9951	1500
f4	-11566	5760	1800

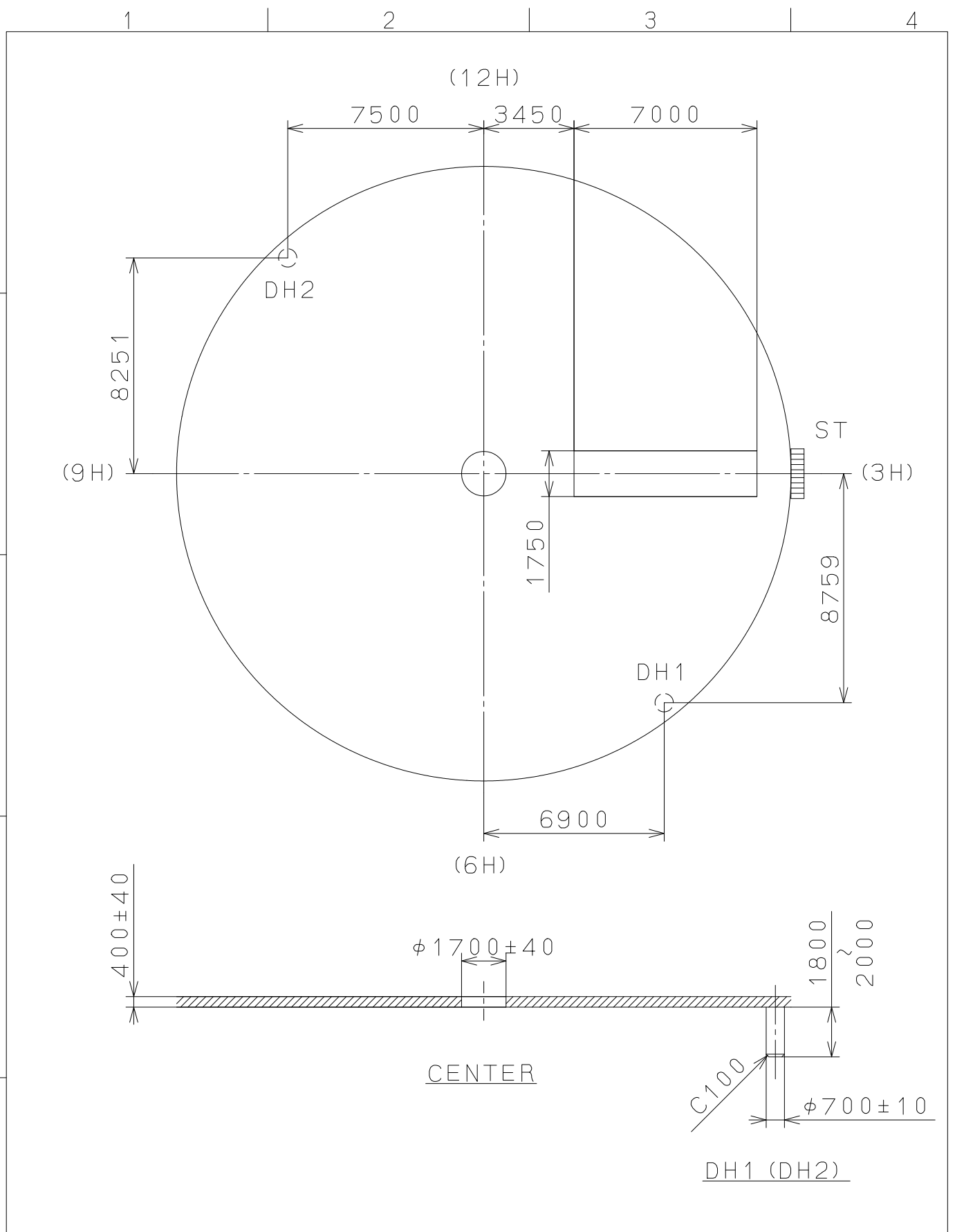


Quantity	Unit	Cal. NO.:
1	1/1000 mm	2S65
Scale	7:1	Parts No.:
Date	Drawn	Name:
Date	Checked	D. Yamada
Date	Approved	Frame for Case
Material		
Heat Treatment		
Hardness		
Plating		
Alterations		
Date		
Description		
Appr.		
Checked		
Approved		
General Tolerances		
Dimensions		
Angles		

MİYOTA
CITIZEN WATCH CO., LTD. TOKYO, JAPAN

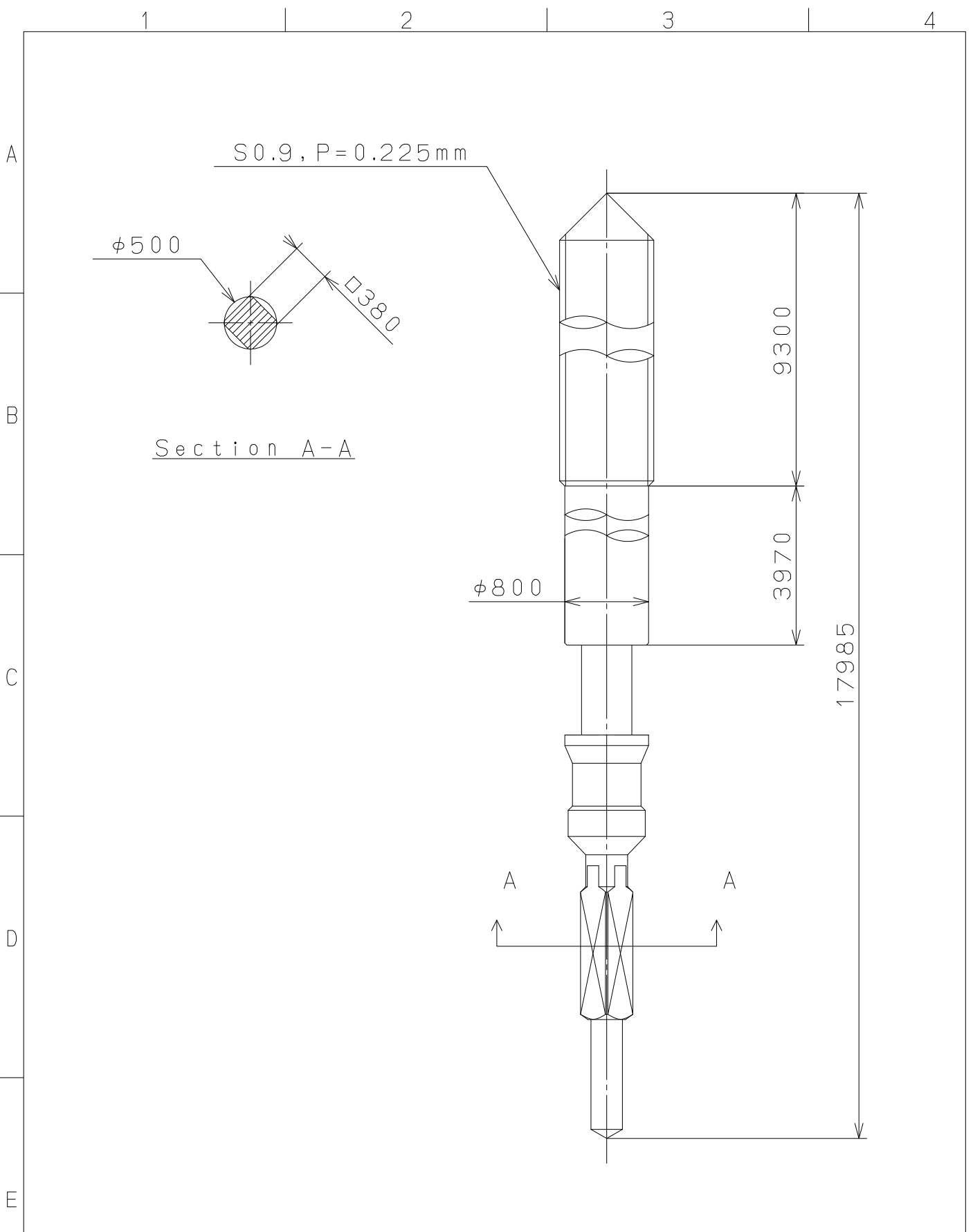
Drawing No.: 2S6500C0

This drawing is provisional and subject to our reconfirmation and/or revision without notice.



△			Quantity		Cal.NO.:
△			Unit	1 / 1000 mm	2S65-00A
△			Scale	5 : 1	Parts No.:
△			Date		
△			Drawn		
Mark	Date	Description	Appro.	Checked	Name:
		Alterations		Approved	D. Yamada
Material					Indications for Dial
Heat Treatment					Drawing No.: 2S6500D0
Hardness			General Tolerances		MIYOTA
Plating			Dimensions		
			Angles		CITIZEN WATCH CO., LTD. TOKYO, JAPAN

This drawing is provisional and subject to our reconfirmation and/or revision without notice.



△5			Quantity		Cal.NO.:
△4			Unit	1/1000mm	
△3			Scale	20:1	Parts No.:
△2			Date		065-501
△1			Drawn		
Mark	Date	Description	Appr.	Checked	D.Yamada
Alterations			Approved	Name:	
			SETTING STEM		
Material					Drawing No.: 501000S0
Heat Treatment					MIYOTA CITIZEN WATCH CO.,LTD. TOKYO,JAPAN
Hardness	General Tolerances				
Plating	Dimensions				
	Angles				