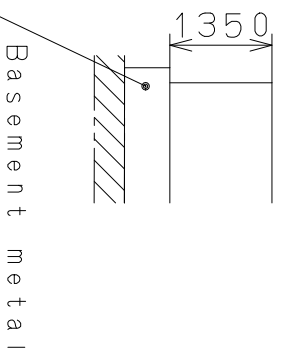
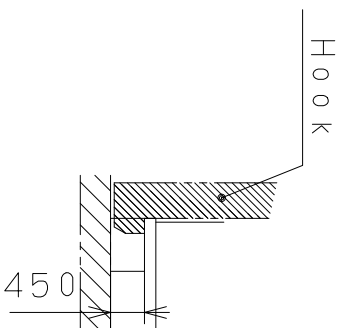
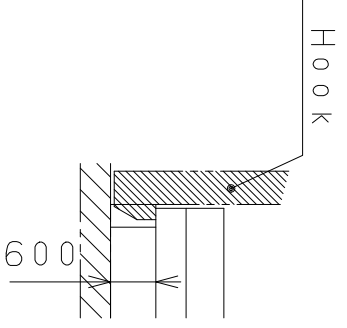
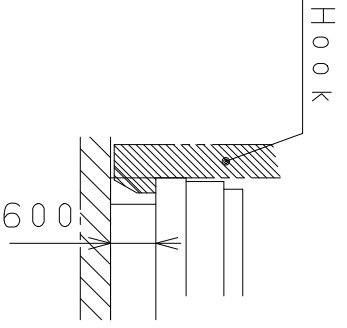
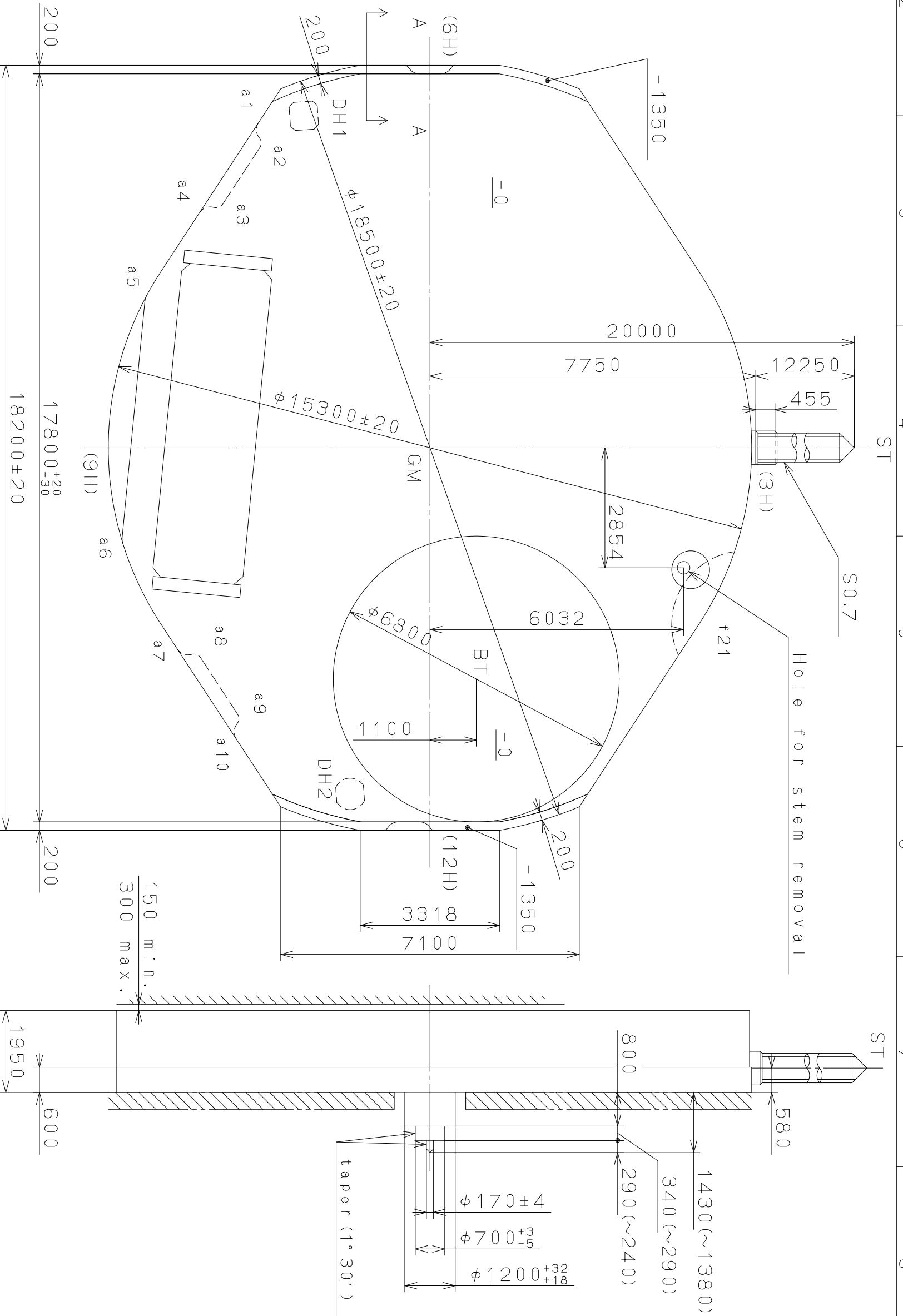


This drawing is provisional and subject to our reconfirmation and/or revision without notice.

DH1~DH2=16171±20

Coordinates			
Mark	X	Y	R
GM	0	0	—
f21	4200	7500	1750
DH1	-7900	-3000	—
DH2	8234	-1900	—
a1	-7569	-3828	300
a2	-7252	-4215	200
a3	-5914	-5092	200
a4	-5433	-5228	300
a5	-3437	-6383	400
a6	2156	-6922	400
a7	4625	-5757	300
a8	5106	-5621	200
a9	6444	-4745	200
a10	6761	-4358	300



Section a1~4

Section a7~10

Section f21

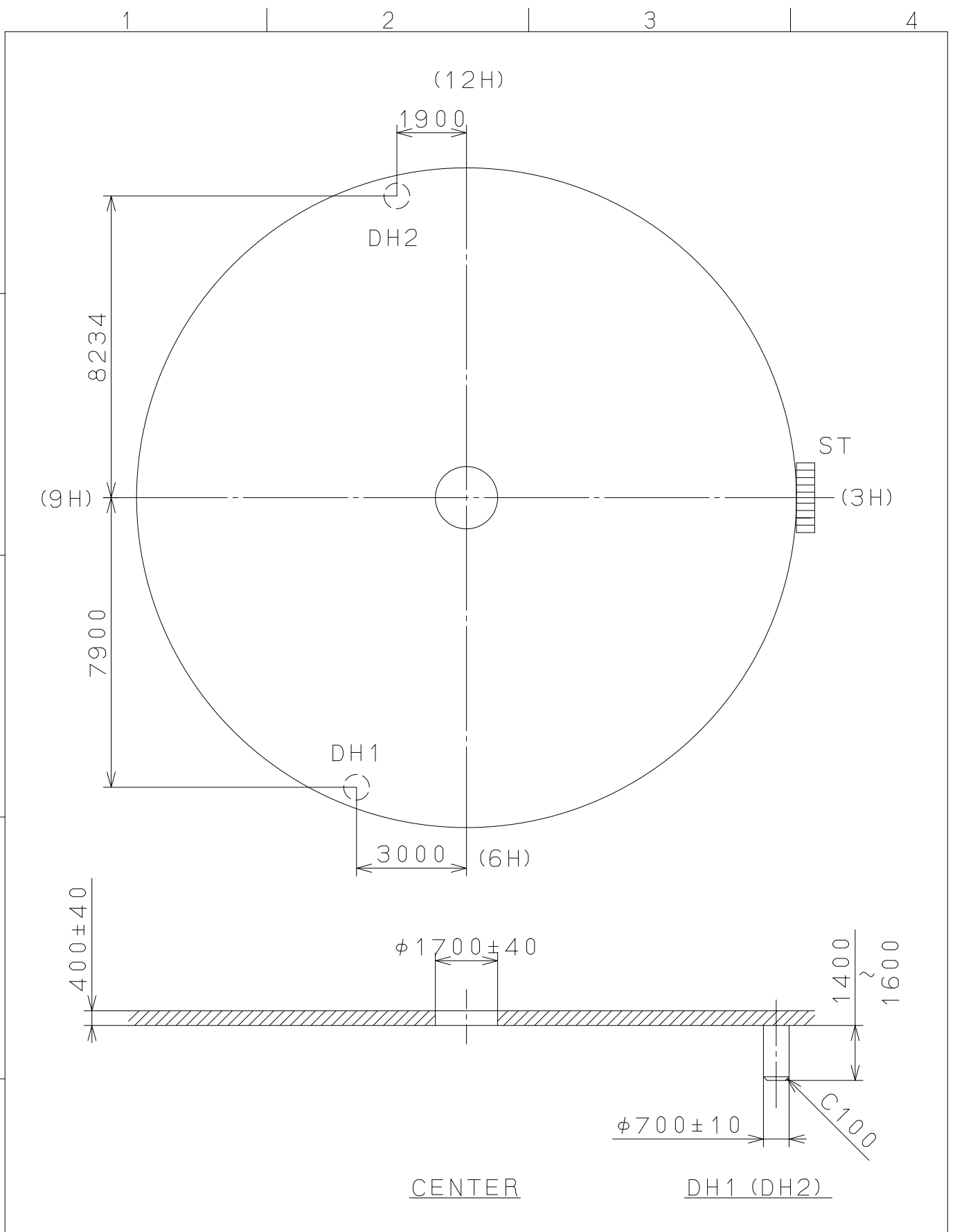
Section A-A

Mark	Date	Description	Appr.	Checked	Drawn	D. Yamada	Name:
Δ5							Frame for Case
Δ4							Drawing No.: 9T3300C0
Δ3							
Δ2							
Δ1							
Material	Alterations		Approved	Name: D. Yamada			
Heat Treatment				Drawing No.: 9T3300C0			
Hardness							
Plating							
	Quantity	Unit	Cal. NO.:		9T33		
	Scale	1/1000 mm	Parts No.:		10:1		
	Date						
	Drawn						
	Checked						
	Approved						
	General Tolerances						
	Dimensions						
	Angles						

MIYOTA
CITIZEN WATCH CO., LTD. TOKYO, JAPAN

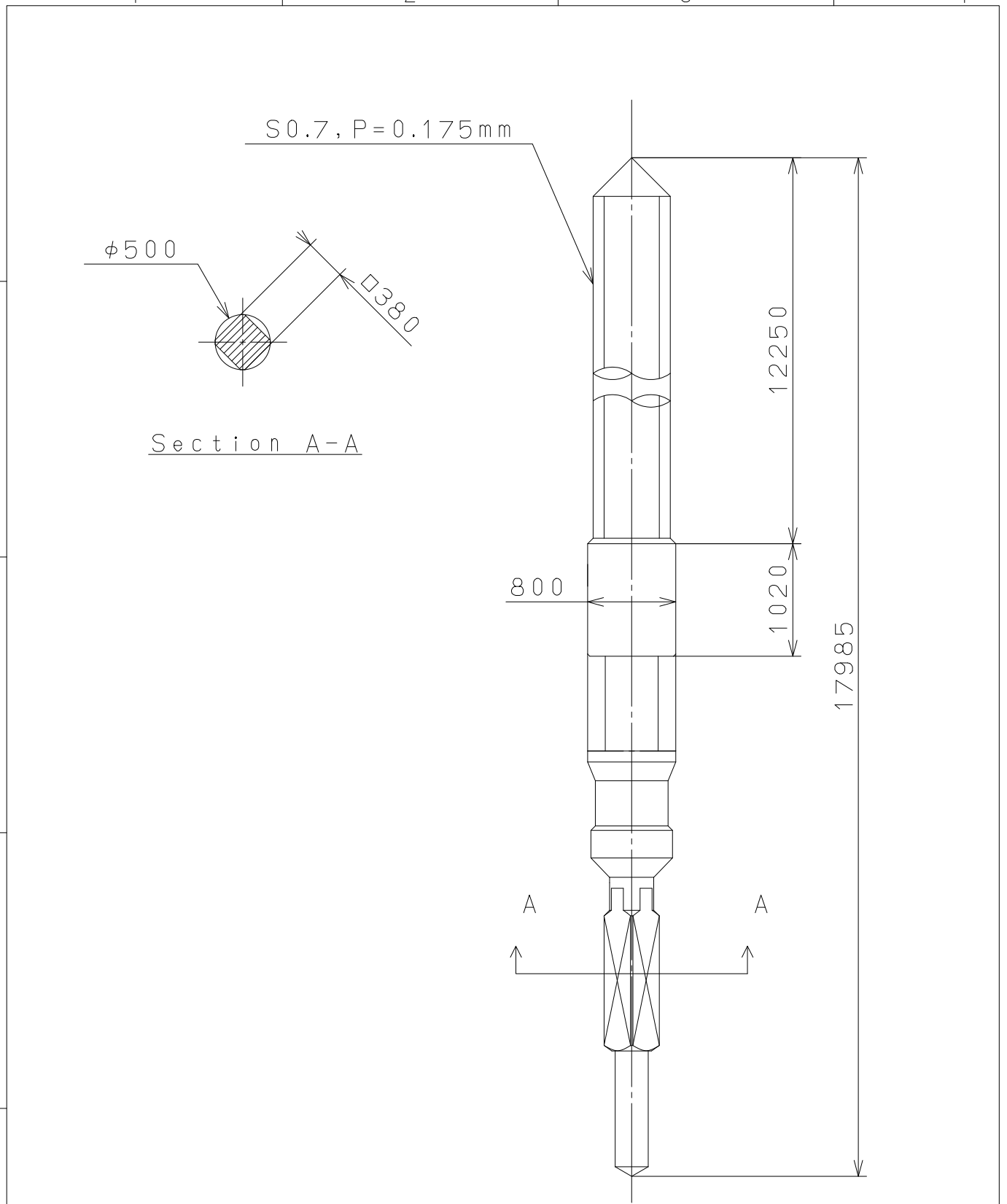
CONFIDENTIAL 2023/03/17 (16:20:00)

This drawing is provisional and subject to our reconfirmation and/or revision without notice.



△			Quantity		Cal.NO.:
△			Unit	1 / 1000 mm	9T33-00A
△			Scale	7 : 1	Parts No.:
△			Date		
△			Drawn		
Mark	Date	Description	Appr.	Checked	Name:
		Alterations	Approved	D. Yamada	
Material					Indications for Dial
Heat Treatment					Drawing No.: 9T3300D0
Hardness			General Tolerances		MIYOTA
Plating			Dimensions		
			Angles		CITIZEN WATCH CO., LTD. TOKYO, JAPAN

This drawing is provisional and subject to our reconfirmation and/or revision without notice.



△5			Quantity		Cal.NO.:
△4			Unit	1/1000mm	
△3			Scale	20:1	Parts No.:
△2			Date		065-495
△1			Drawn		
Mark	Date	Description	Appro.	Checked	D.Yamada
Alterations			Approved	Name: SETTING STEM	
Material					Drawing No.: 495000S0
Heat Treatment	General Tolerances				MIYOTA
Hardness	Dimensions				
Plating	Angles				
					CITIZEN WATCH CO.,LTD. TOKYO,JAPAN